

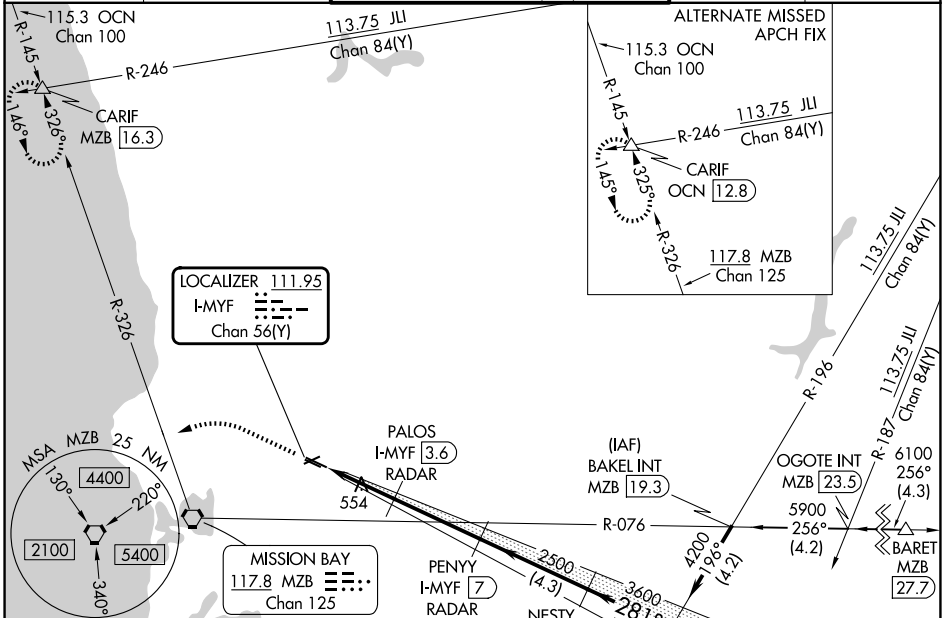
LOC/DME I-MYF <b>111.95</b> Chan <b>56(Y)</b>	APP CRS <b>281°</b>	Rwy Ldg TDZE Apt Elev <b>3399</b> <b>423</b> <b>427</b>
---	------------------------	--

# ILS or LOC RWY 28R

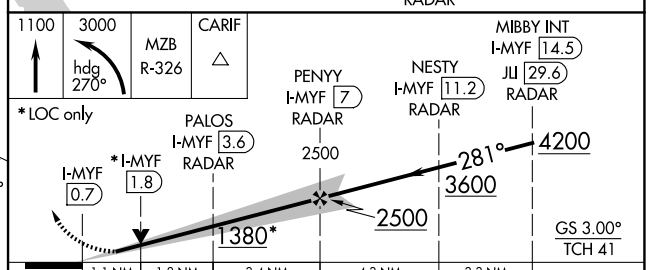
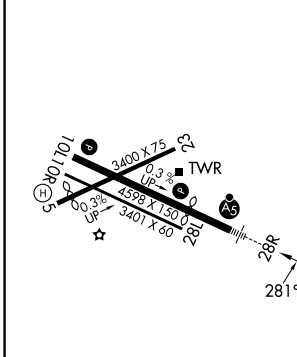
MONTGOMERY-GIBBS EXEC (MYF)

DME or RADAR required.		MALSR	MISSED APPROACH: Climb to 1100 then climbing left turn to 3000 on heading 270° and MZB VORTAC R-326 to CARIF INT/MZB 16.3 DME and hold.	
Circling Rwy 10L, 23, 28L NA at night. Rwy 28R helicopter visibility reduction below 3/4 SM NA. Inop table does not apply to S-ILS all Cats. For inop ALS, increase S-LOC 28R all Cats visibility to 1 SM.				

ATIS <b>126.9</b>	SOCAL APP CON <b>124.35 279.625</b>	MONTGOMERY TOWER* <b>119.2 (CTAF) 0 269.4 (5, 10L/R, 23, 28L)</b> <b>125.7 269.4 (28R)</b>	GND CON <b>118.225</b>	UNICOM <b>123.075</b>
----------------------	--	--	---------------------------	--------------------------



ELEV 427	TDZE 423
----------	----------



REIL Rwy 28L  
MIRL Rwy 10L-28R

FAF to MAP 6.3 NM

Knots	60	90	120	150	180
Min:Sec	6:18	4:12	3:09	2:31	2:06

CATEGORY	A	B	C	D
S-ILS 28R	673-3/4	250 (300-3/4)		NA
S-LOC 28R	820-3/4	397 (400-3/4)		NA
CIRCLING	920-1	493 (500-1)		NA

SW-3, 11 JUN 2026 to 09 JUL 2026

SW-3, 11 JUN 2026 to 09 JUL 2026