

APP CRS	Rwy Idg	5320
038°	TDZE	161
	Apt Elev	163

RNAV (GPS) RWY 4

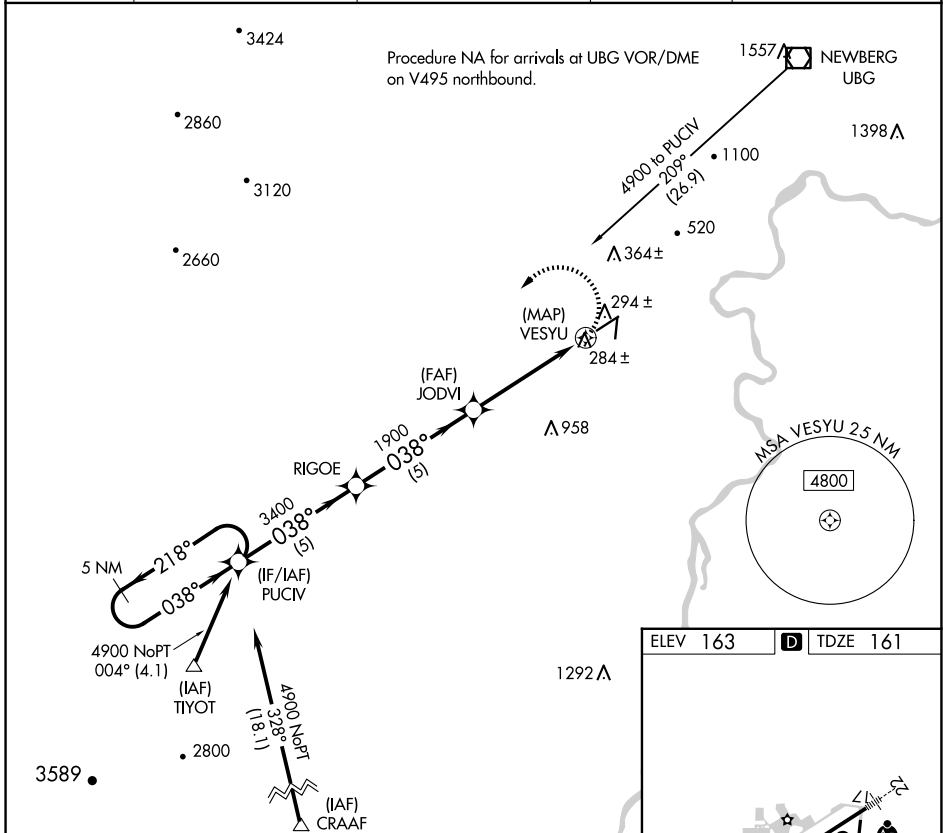
MC MINNVILLE MUNI (MMV)

RNP APCH.

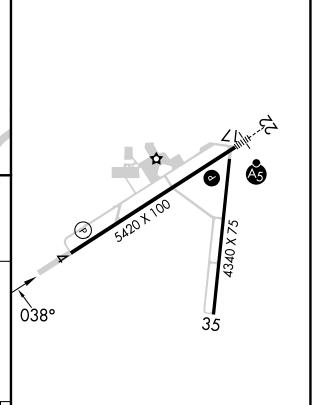
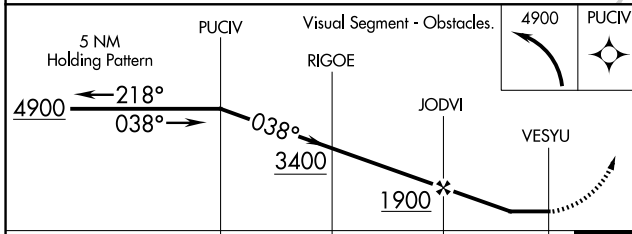
▼ When local altimeter setting not received, use Aurora State altimeter setting and increase all MDA 60 feet and visibility Cats C/D to 1½.
 ▲ Rwy 4 helicopter visibility reduction below ¾ SM NA.

MISSED APPROACH: Climbing left turn to 4900 direct PUCIV and hold, continue climb-in-hold to 4900.

ASOS 135.675	PORTLAND APP CON 126.0 284.6 (NORTH)	SEATTLE CENTER 125.8 291.7 (SOUTH)	CLNC DEL 118.35	UNICOM 123.0 (CTAF) 1
------------------------	--	--	---------------------------	--



ELEV 163	D TDZE 161
----------	-------------------



CATEGORY	A	B	C	D
LNAV MDA	600-1	439 (500-1)	600-1¼	439 (500-1¼)

REIL Rwy 4 **1**
 HIRL Rwy 4-22 **1**

NW-1, 11 JUN 2026 to 09 JUL 2026

NW-1, 11 JUN 2026 to 09 JUL 2026