

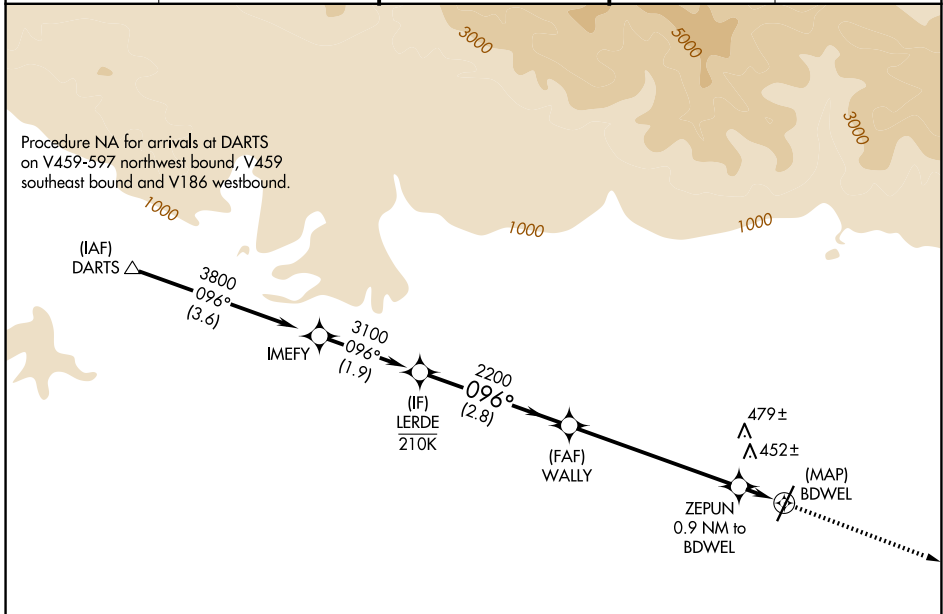
APP CRS	Rwy Ldg	N/A
096°	TDZE	N/A
	Apt Elev	296

RNAV (GPS)-B

SAN GABRIEL VALLEY (EMT)

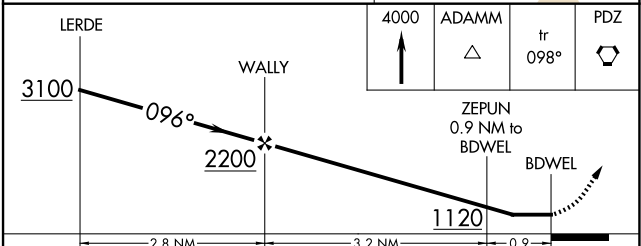
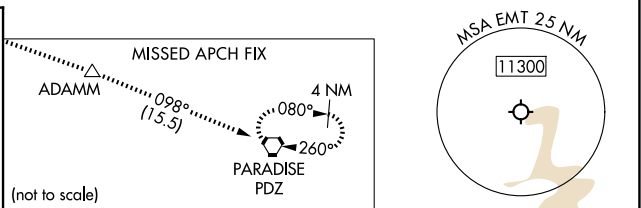
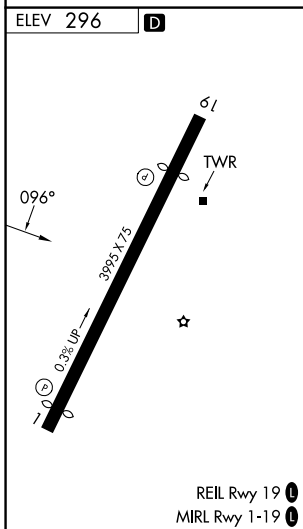
RNP APCH-GPS.		MISSED APPROACH: Climb to 4000 direct ADAMM and on track 098° to PDZ VORTAC and hold.		
Circling Rwy 1 NA at night. Rwy 1, 19 helicopter visibility reduction below 1 SM NA.				

ATIS 118.75	SOCAL APP CON 125.5 349.0	EL MONTE TOWER * 121.2 (CTAF) 0	GND CON 125.9	UNICOM 122.95
-----------------------	-------------------------------------	---	-------------------------	-------------------------



SW-3, 11 JUN 2026 to 09 JUL 2026

SW-3, 11 JUN 2026 to 09 JUL 2026



CATEGORY	A	B	C	D
CIRCLING	820-1 524 (600-1)	960-1 664 (700-1)	1140-2½ 844 (900-2½)	1300-3 1004 (1100-3)