

BULLDOG THREE DEPARTURE (OBSTACLE) (BLDG 3.VISTA)

OCEANSIDE, CALIFORNIA

[USN]

Rwy	Knots	60	120	180	240	300	360
3 (C)	V/V(fpm)	486	972	1458	1944	2430	2916
21 (B)	V/V(fpm)	442	884	1326	1768	2210	2652

ATIS ★285.45
 CLNC DEL
 134.675 271.6
 GND CON
 134.675 360.2
 TOWER ★
 128.775 340.2
 SOCAL DEP CON
 127.3 323.0

Minimum Climb Rate

(C) to 800

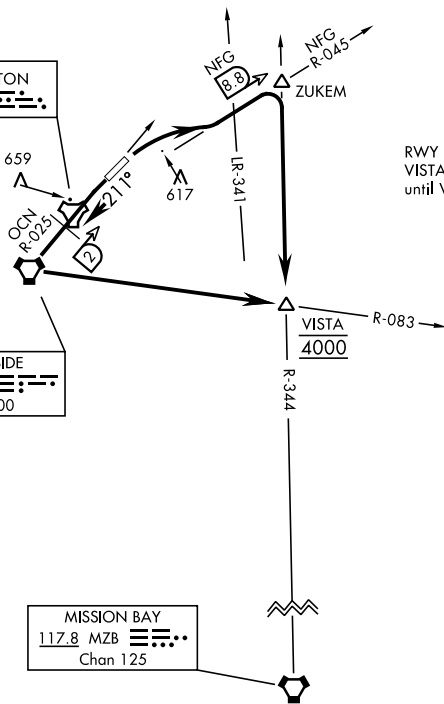
(B) to 1300

NOT FOR CIVIL USE

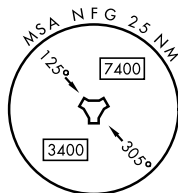
CAMP PENDLETON
 Chan 55 NFG

OCEANSIDE
 115.3 OCN
 Chan 100

MISSION BAY
 117.8 MZB
 Chan 125



RWY 3: RNAV required ZUKEM to VISTA. Do not exceed 240 KIAS until VISTA.



DEPARTURE ROUTE DESCRIPTION

TAKEOFF RWY 3: Climbing right turn to intercept NFG TACAN R-045 to ZUKEM then right turn direct VISTA. Cross VISTA at 4000 or assigned altitude.

TAKEOFF RWY 21: Climb on heading 211° to intercept OCN VORTAC R-025 then direct OCN then left turn to intercept OCN R-083 direct VISTA. Cross VISTA at 4000 or assigned altitude.