

OCEANSIDE, CALIFORNIA

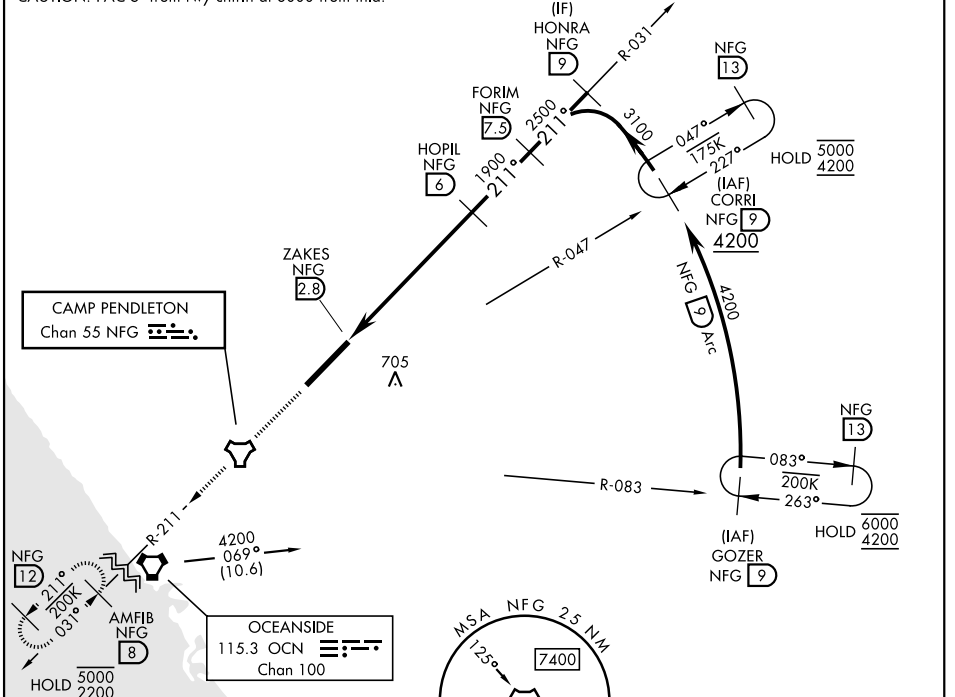
COPTER TACAN RWY 21

TACAN NFG Chan 55	APCH CRS 211°	Rwy ldg TDZE Arpt Elev	6005 78 78
----------------------	------------------	------------------------------	------------------

[USN] CAMP PENDLETON MCAS (MUNN FLD) (KNFG)

* When ALS inop, increase CAT A increase vis to 1 1/4 miles.		SALSF 	MISSED APPROACH: Climb to 2200 direct NFG TACAN then direct AMFIB and hold.	
ATIS ★ 285.45	APP CON 127.3 323.0	TOWER ★ 128.775 340.2	GND CON 134.675 360.2	ASR/ PAR

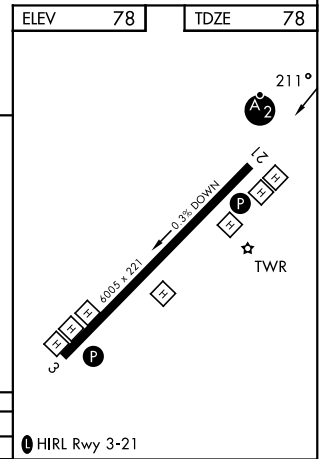
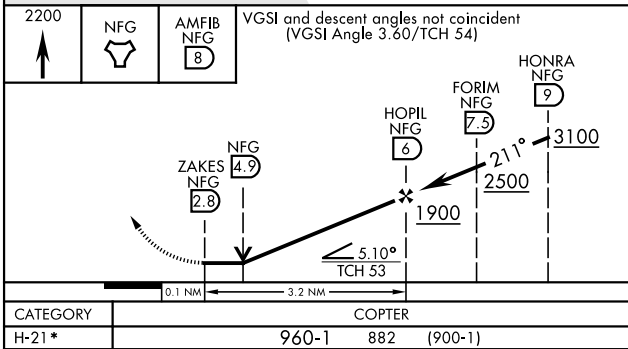
CAUTION: FAC 5' from rwy cntrn at 3000 from thld.



SW-3, 11 JUN 2026 to 09 JUL 2026

SW-3, 11 JUN 2026 to 09 JUL 2026

ELEV	78	TDZE	78
------	----	------	----



OCEANSIDE, CALIFORNIA 33°18'N-117°21'W CAMP PENDLETON MCAS (MUNN FLD) (KNFG)

Amtd 7 14MAY26

COPTER TACAN RWY 21

HIRL Rwy 3-21