

25163

CAMP PENDLETON MCAS (MUNN FLD) (KNFG)

QUNTN TWO DEPARTURE (OBSTACLE) (QUNTN2.OCN)

OCEANSIDE, CALIFORNIA

ATIS ★ 285.45
 CLNC DEL
 134.675 271.6
 GND CON
 134.675 360.2
 TOWER ★
 128.775 340.2
 SOCAL DEP CON
 127.3 323.0

[USN]

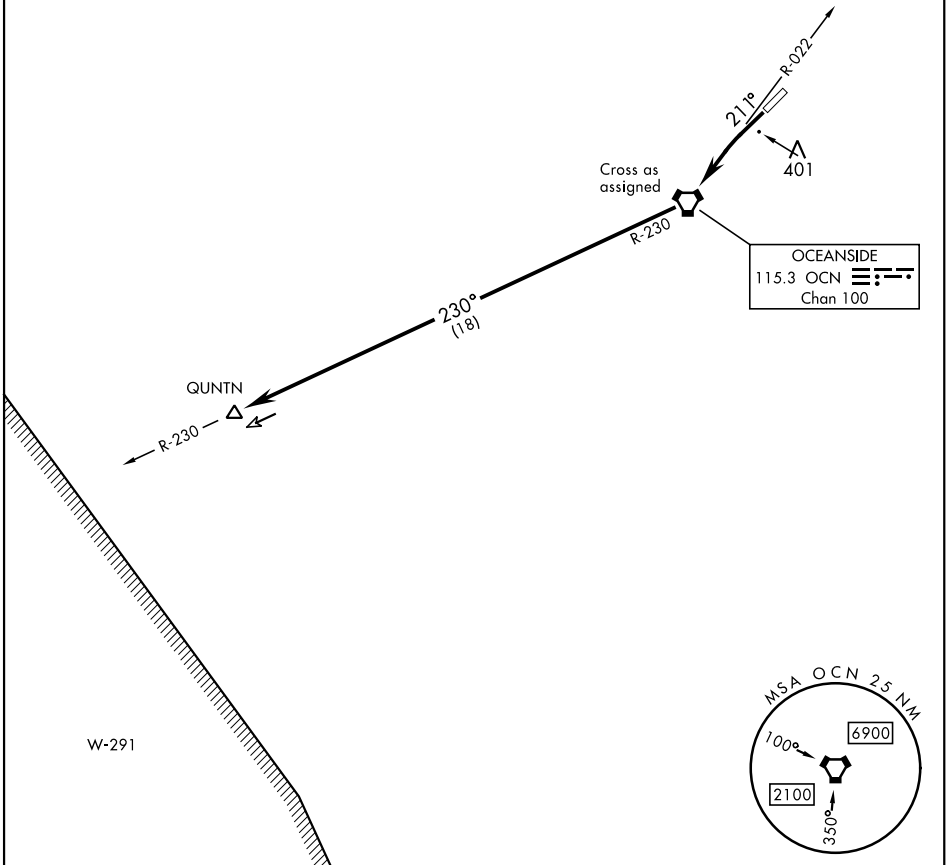
Rwy	Knots	60	120	180	240	300	360
21	V/V(fpm)	482	964	1446	1928	2410	2892

Minimum Climb Rate to 900

NOT FOR CIVIL USE

SW-3, 11 JUN 2026 to 09 JUL 2026

SW-3, 11 JUN 2026 to 09 JUL 2026



OCEANSIDE
 115.3 OCN
 Chan 100

DEPARTURE ROUTE DESCRIPTION

TAKEOFF RWY 21: Climb on heading 211° to intercept OCN VORTAC R-022 to OCN. Cross OCN at assigned altitude, then direct QUNTN.

QUNTN TWO DEPARTURE (OBSTACLE) (QUNTN2.OCN)

OCEANSIDE, CALIFORNIA

Orig 12JUN25

CAMP PENDLETON MCAS (MUNN FLD) (KNFG)