

OCEANSIDE, CALIFORNIA

VOR/DME or TACAN Y RWY 21

VORTAC OCN 115.3 Chan 100	APCH CRS 206°	Rwy Ildg TDZE Arprt Elev 6005 78 78
---	-------------------------	---

[USN]

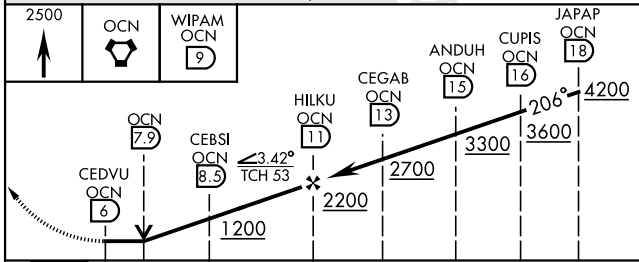
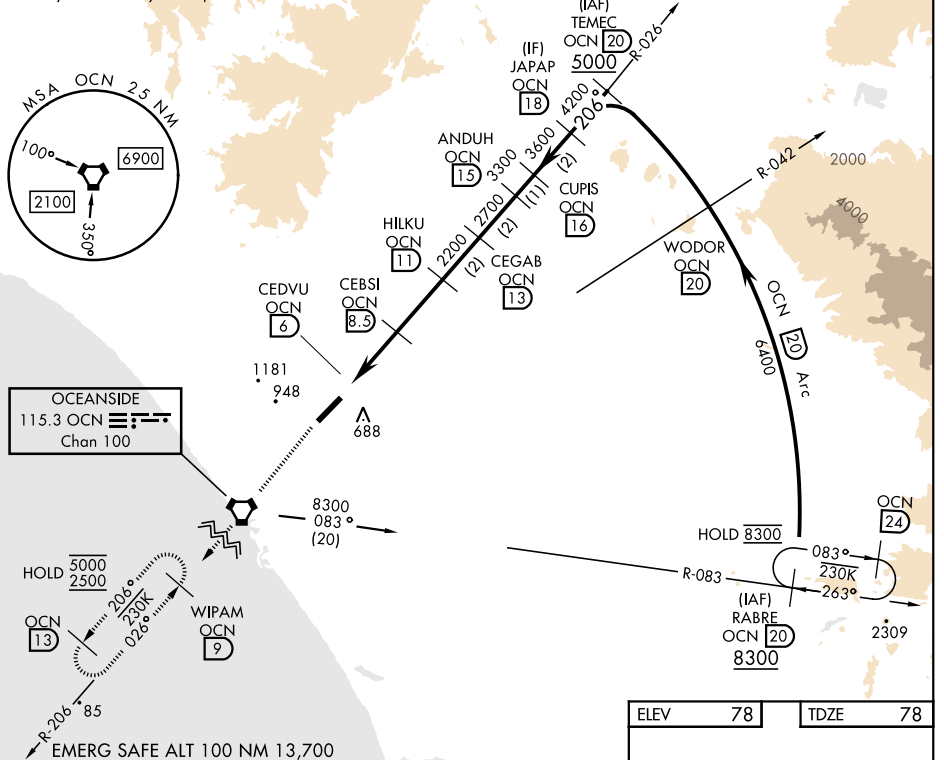
CAMP PENDLETON MCAS (MUNN FLD) (KNFG)

* When ALS inop, increase CAT A vis to 1½ miles,
 CAT B vis to 1½ miles, CAT CD vis to 3 miles.
 ** Circling Rwy 3 not authorized at night when VGSI inop.

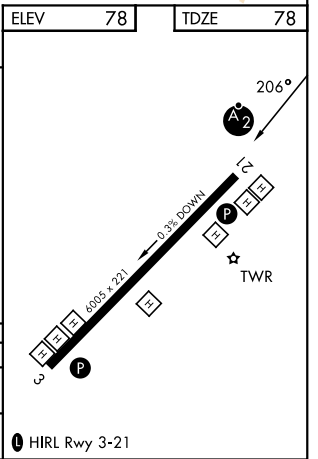
SALSF
 MISSED APPROACH: Climb to 2500 direct OCN
 VORTAC then direct WIPAM and hold.

ATIS ★ 285.45	APP CON 127.3 323.0	TOWER ★ 128.775 0 340.2	GND CON 134.675 360.2	ASR \ PAR
-------------------------	-------------------------------	-----------------------------------	---------------------------------	-----------

Visibility reduction by helicopters not authorized.



CATEGORY	A	B	C	D
S-21 *	1120-1 1042 (1100-1)	1120-1½ 1042 (1100-1½)	1120-2½	1042 (1100-2½)
CIRCLING **	1120-1½ 1042 (1100-1½)	1260-1½ 1182 (1200-1½)	1500-3	1422 (1500-3)



SW-3, 11 JUN 2026 to 09 JUL 2026

SW-3, 11 JUN 2026 to 09 JUL 2026

OCEANSIDE, CALIFORNIA

33° 18' N-117° 21' W

CAMP PENDLETON MCAS (MUNN FLD) (KNFG)

Amdt 7 14MAY26

VOR/DME or TACAN Y RWY 21