

APP CRS	Rwy Ldg	5659
324°	TDZE	315
	Apt Elev	316

RNAV (GPS) RWY 33

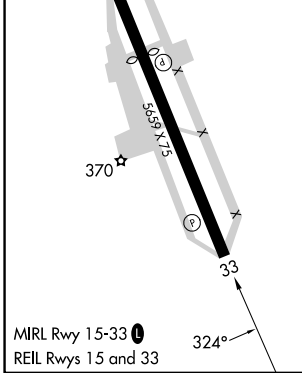
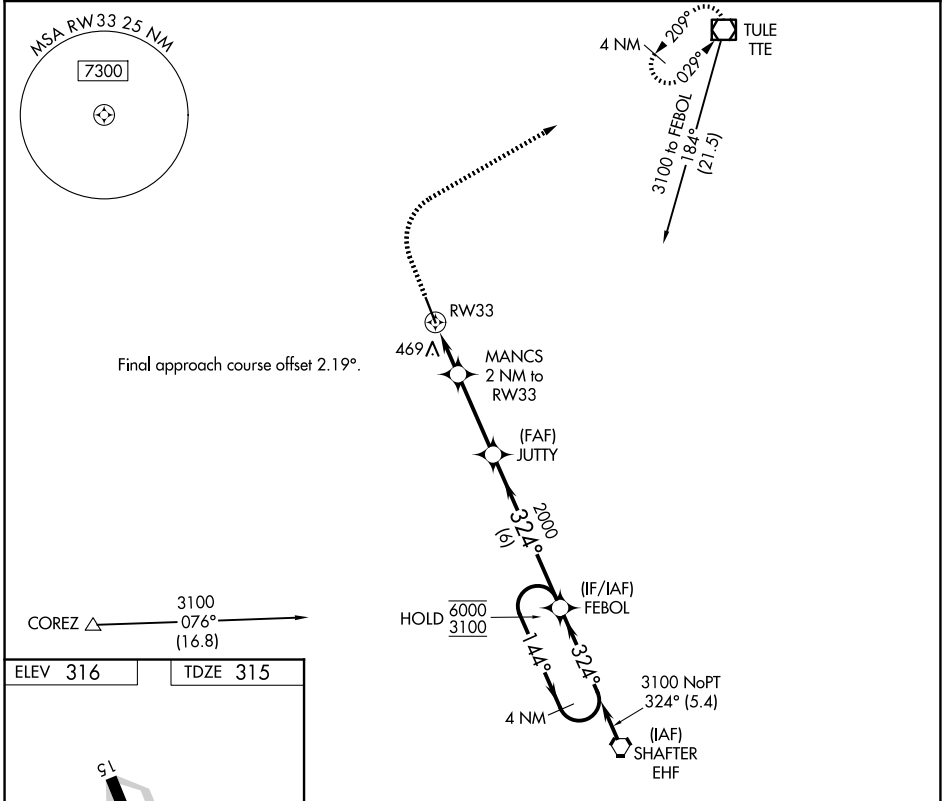
DELANO MUNI (DLO)

RNP APCH - GPS.

⚠ Circling NA southwest of Rwy 15-33.
 ⚠ When local altimeter setting not received, procedure NA.

MISSED APPROACH: Climb to 800 then climbing right turn to 3100 direct TTE VOR/DME and hold.

AWOS-3P 119.55	BAKERSFIELD APP CON ★ 118.9	UNICOM 122.8 (CTAF) ①
--------------------------	---------------------------------------	---------------------------------



800	3100	TTE	VGSi and descent angles not coincident (VGSi Angle 3.00/TCH 26).	
↑	↷	☐	MANCS 2 NM to RW33	JUTTY
			FEBOL	4 NM Holding Pattern
			1.2 NM to RW33	0.9 NM
			3.00° TCH 40	324°
			1000	2000
			144°	6000
			324°	3100
			1.2 NM	0.9 NM
			3.1 NM	6 NM
CATEGORY	A	B	C	D
LNAV MDA	720-1	405 (500-1)	720-1½	405 (500-1½)
CIRCLING	760-1	780-1	820-1½	960-2
	444 (500-1)	464 (500-1)	504 (600-1½)	644 (700-2)

SW-3, 11 JUN 2026 to 09 JUL 2026

SW-3, 11 JUN 2026 to 09 JUL 2026