

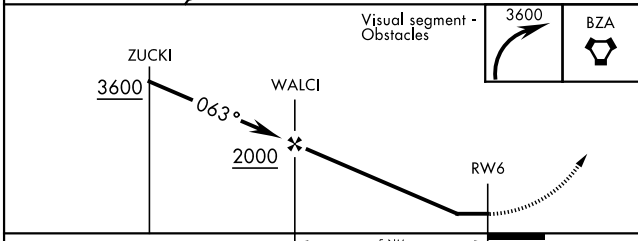
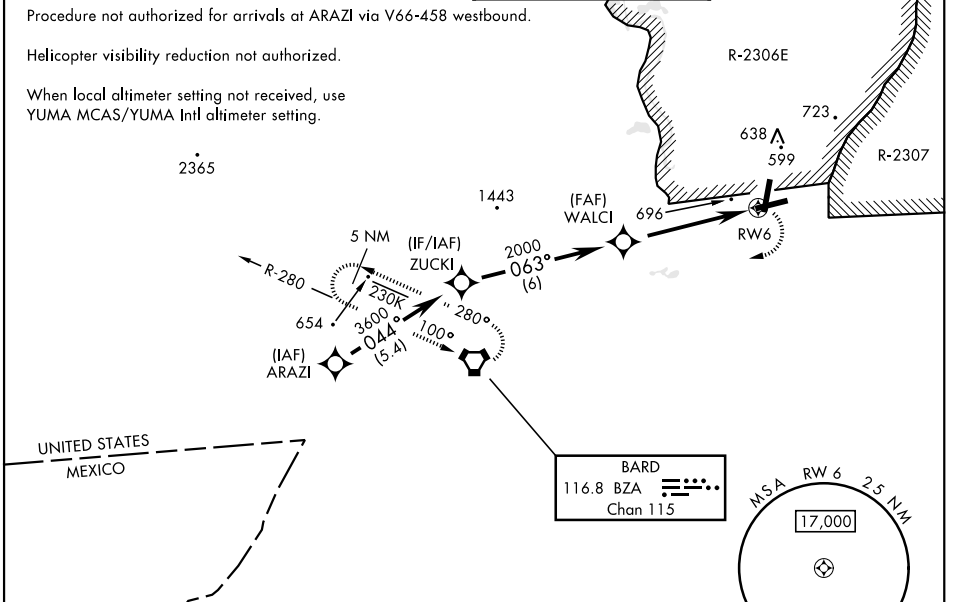
YUMA, ARIZONA

RNAV (GPS) RWY 6

APCH CRS 063°	Rwy Idg 6043	TDZE 387	Arprt Elev 433	[USA]	LAGUNA AAF (YUMA PROVING GROUND) (KLGf)
-------------------------	------------------------	--------------------	--------------------------	-------	---

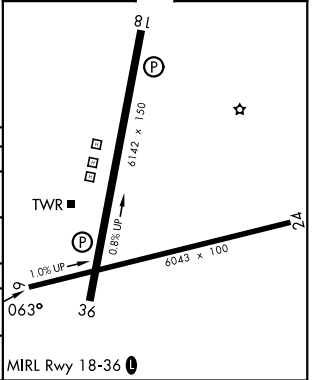
RNP APCH - GFS	MISSED APPROACH: Climbing right turn to 3600 direct BZA VORTAC and hold.
RADAR required for holding. Procedure not authorized when airfield closed. * Straight-in Minimums not authorized at night. ** Circling not authorized NW of Rwys 6 and 18. Circling to Rwy 24 not authorized at night.	

ATIS 128.225	YUMA APP CON 124.7 371.975	TOWER ★ 126.2 (CTAF) 242.175	GND CON 121.8 229.4
------------------------	--------------------------------------	--	-------------------------------



ELEV	433	TDZE	387
------	-----	------	-----

CATEGORY	A	B	C	D
LNAV MDA*	1020-1 633 (600-1)	1020-1¾ 633 (600-1¾)		
CIRCLING**	1080-1 647 (700-1)	1080-1¾ 647 (700-1¾)	1080-2 647 (700-2)	
YUMA MCAS/YUMA Intl ALTIMETER SETTING				
LNAV MDA*	1100-1 713 (700-1)	1100-2 713 (700-2)		
CIRCLING**	1160-1 727 (800-1)	1160-2 727 (800-2)	1160-2¼ 727 (800-2¼)	



YUMA, ARIZONA 32°52'N-114°24'W LAGUNA AAF (YUMA PROVING GROUND) (KLGf)

Amdt 1 05OCT23

RNAV (GPS) RWY 6

SW-4, 11 JUN 2026 to 09 JUL 2026

SW-4, 11 JUN 2026 to 09 JUL 2026