

YUMA, ARIZONA

VOR RWY 6

VORTAC BZA 116.8 Chan 115	APCH CRS 048°	Rwy Idg TDZE Arprt Elev 6043 387 433	[USA] LAGUNA AAF (YUMA PROVING GROUND) (KLGf)
---	-------------------------	--	---

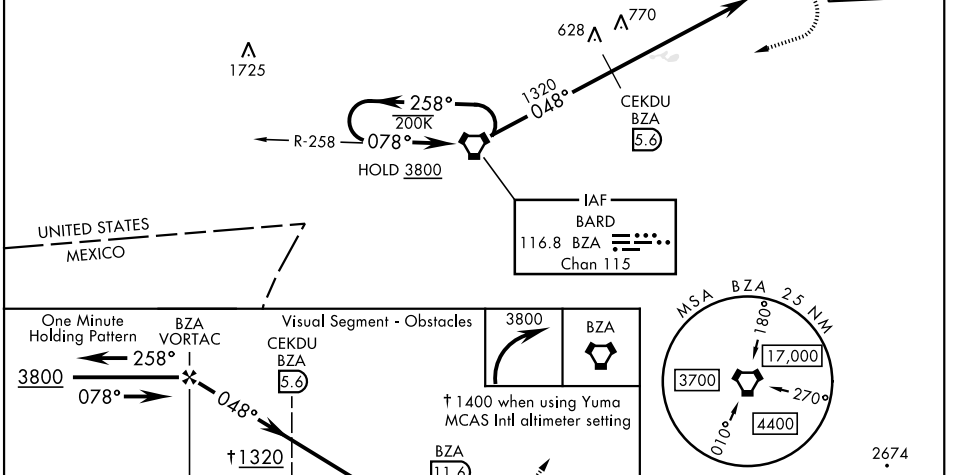
RADAR required for holding.

MISSED APPROACH: Climbing right turn to 3800 direct BZA VORTAC and hold, continue climb-in-hold to 3800.

Procedure not authorized at night.
NA ** Circling not authorized NW of rwy 06 and 18.

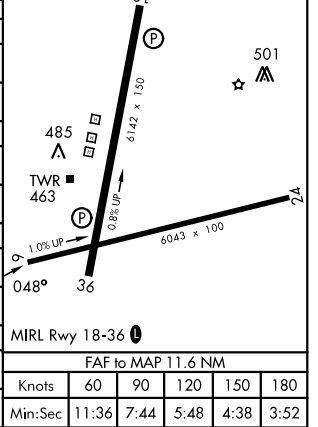
ATIS 128.225	YUMA APP CON 124.7 371.975	TOWER ★ 126.2 (CTAF) 242.175	GND CON 121.8 229.4
------------------------	--------------------------------------	--	-------------------------------

Helicopter visibility reduction not authorized.
Procedure not authorized when airfield closed.
Unlit road 379' MSL, 314' from threshold.
Obtain local altimeter setting on CTAF.
When not received, use Yuma MCAS Intl altimeter setting.



CATEGORY	A	B	C	D
S-6*	1320-1¼ 933 (900-1¼)		1320-2½ 933 (900-2½)	
CIRCLING**	1320-1¼ 887 (900-1¼)		1320-2¾ 887 (900-2¾)	1320-3 887 (900-3)
DME MINIMA				
S-6*	1040-1 653 (700-1)		1040-1⅞ 653 (700-1⅞)	
CIRCLING**	1080-1 647 (700-1)		1080-1⅞ 647 (700-1⅞)	1080-2 647 (700-2)
YUMA MCAS/YUMA Intl ALTIMETER SETTING				
S-6*	1400-1¼ 1013 (1000-1¼)	1400-1½ 1013 (1000-1½)	1400-3 1013 (1000-3)	
CIRCLING**	1400-1¼ 967 (1000-1¼)	1400-1½ 967 (1000-1½)	1400-3 967 (1000-3)	
YUMA MCAS/YUMA Intl ALTIMETER SETTING DME MINIMA				
S-6*	1120-1 733 (700-1)		1120-2 733 (700-2)	
CIRCLING**	1160-1 727 (800-1)		1160-2 727 (800-2)	1160-2¼ 727 (800-2¼)

ELEV 433	TDZE 387
----------	----------



FAF to MAP 11.6 NM					
Knots	60	90	120	150	180
Min:Sec	11:36	7:44	5:48	4:38	3:52

YUMA, ARIZONA 32°52'N-114°24'W LAGUNA AAF (YUMA PROVING GROUND) (KLGf)

Amtd 7 05OCT23

VOR RWY 6

SW-4, 11 JUN 2026 to 09 JUL 2026

SW-4, 11 JUN 2026 to 09 JUL 2026