

WAAS CH 72936 W02A	APP CRS 016°	Rwy Ldg TDZE Apt Elev	6250 456 458
--	------------------------	-----------------------------	---

RNAV (GPS) RWY 2

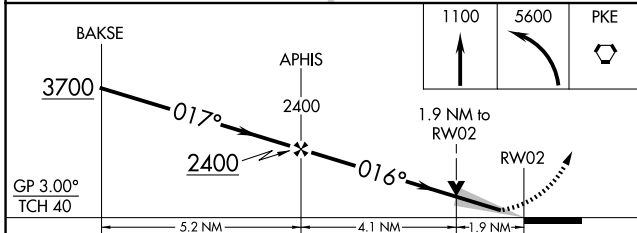
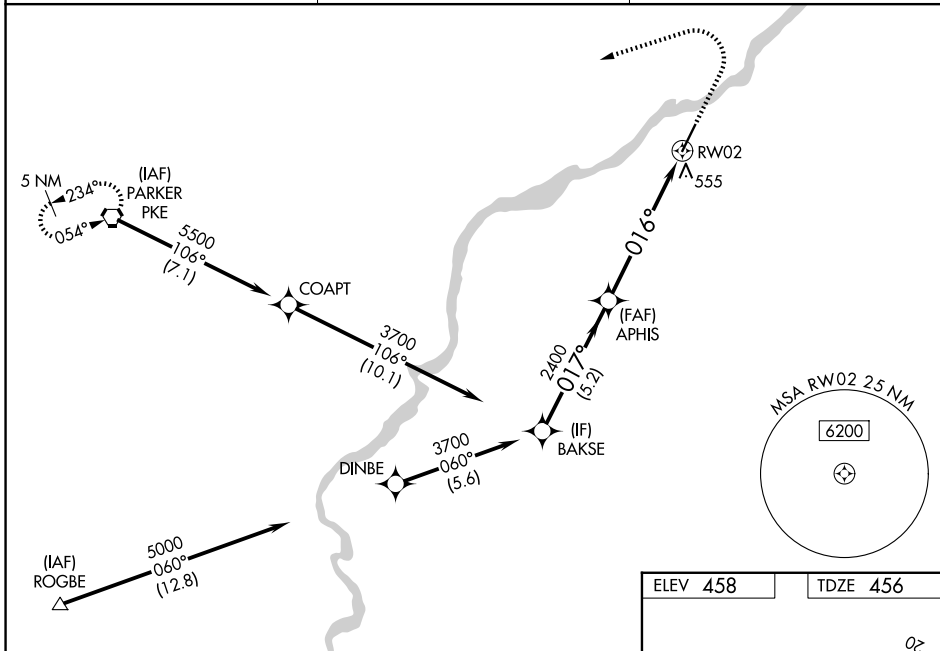
AVI SUQUILLA (P2 \emptyset)

RNP APCH - GPS.

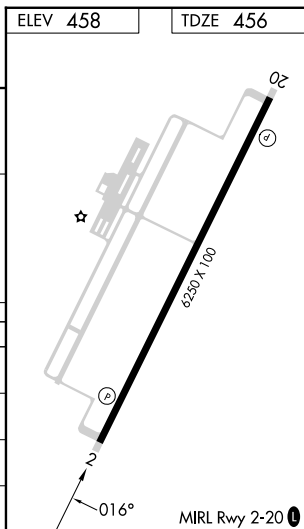
NA For uncompensated Baro-VNAV systems, LNAV/VNAV NA below -15°C or above 54°C. Baro-VNAV and VDP NA when using Blythe altimeter setting. When local altimeter setting not received, use Blythe altimeter setting and increase LPV DA to 804 feet and all visibilities ¼ SM. Increase LNAV/VNAV DA to 1018 feet and all visibilities ¼ SM. Increase all MDAs 100 feet and LNAV visibility Cat B/C ¼ SM, and Circling visibility Cat B ¼ SM.

MISSED APPROACH: (Do not exceed 180K until PKE VORTAC) Climb to 1100, then climbing left turn to 5600 direct PKE VORTAC and hold, continue climb-in-hold to 5600.

AWOS-3PT 132.75	LOS ANGELES CENTER 128.15 285.6	UNICOM 122.725 (CTAF) \emptyset
---------------------------	---	--



CATEGORY	A	B	C	D
LPV DA		706-¾	250 (300-¾)	NA
LNAV/VNAV DA		920-1¾	464 (500-1¾)	NA
LNAV MDA	1100-1	644 (700-1)	1100-3 644 (700-3)	NA
CIRCLING	1100-1	642 (700-1)	1580-3 1122 (1200-3)	NA



SW-4, 11 JUN 2026 to 09 JUL 2026

SW-4, 11 JUN 2026 to 09 JUL 2026