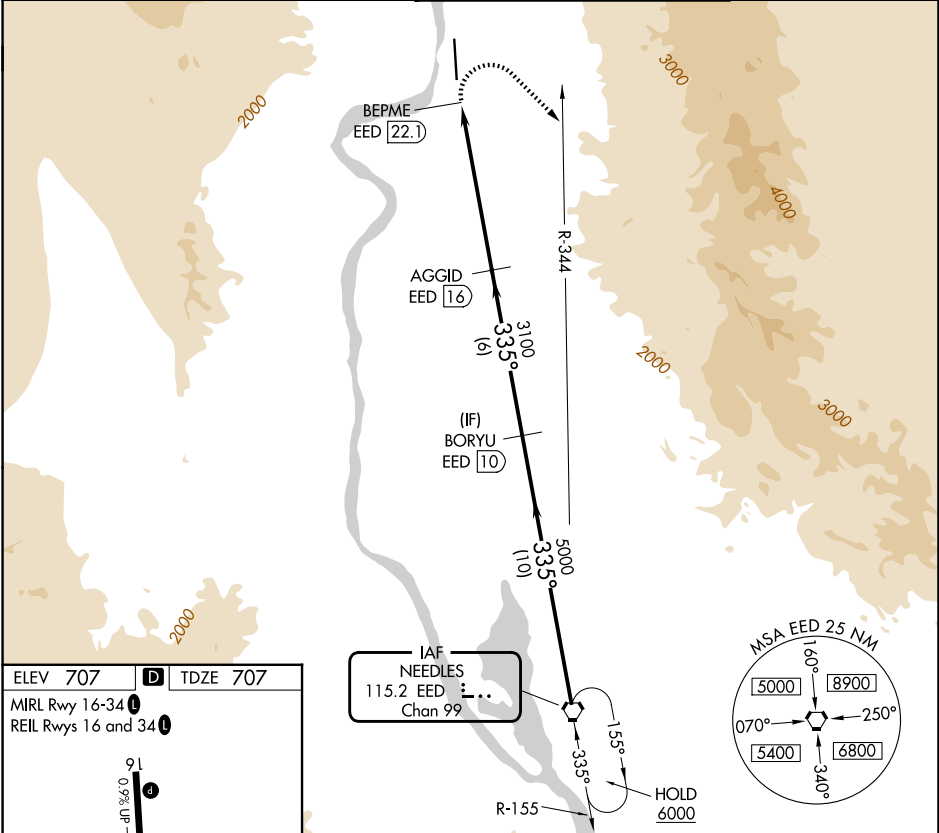


VORTAC EED 115.2 Chan 99	APP CRS 335°	Rwy Ldg 8500 TDZE 707 Apt Elev 707
--	------------------------	---

VOR RWY 34
LAUGHLIN/BULLHEAD INTL (IFP)

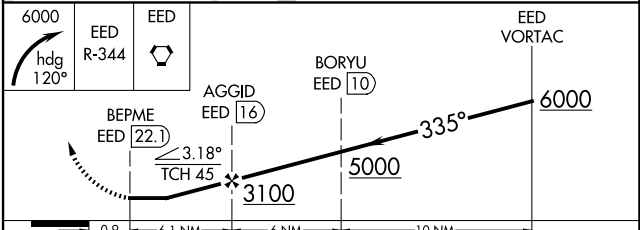
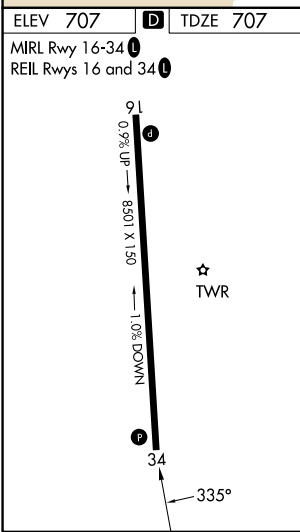
⚠ Rwy 34 helicopter visibility reduction below ¼ SM NA. DME required. Circling Rwy 16 NA at night. **MISSED APPROACH:** Climbing right turn to 6000 on heading 120° and EED VORTAC R-344 to EED VORTAC and hold.

ATIS 119.825	LOS ANGELES CENTER 134.65 360.65	BULLHEAD TOWER★ 123.9(CTAF) 0	GND CON 118.25
------------------------	--	---	--------------------------



SW-4, 11 JUN 2026 to 09 JUL 2026

SW-4, 11 JUN 2026 to 09 JUL 2026



CATEGORY	A	B	C	D
S-34	2840-1¼ 2133 (2200-1¼)	2840-1½ 2133 (2200-1½)	2840-3	2133 (2200-3)
CIRCLING	2840-1¼ 2133 (2200-1¼)	2840-1½ 2133 (2200-1½)	2840-3	2133 (2200-3)