

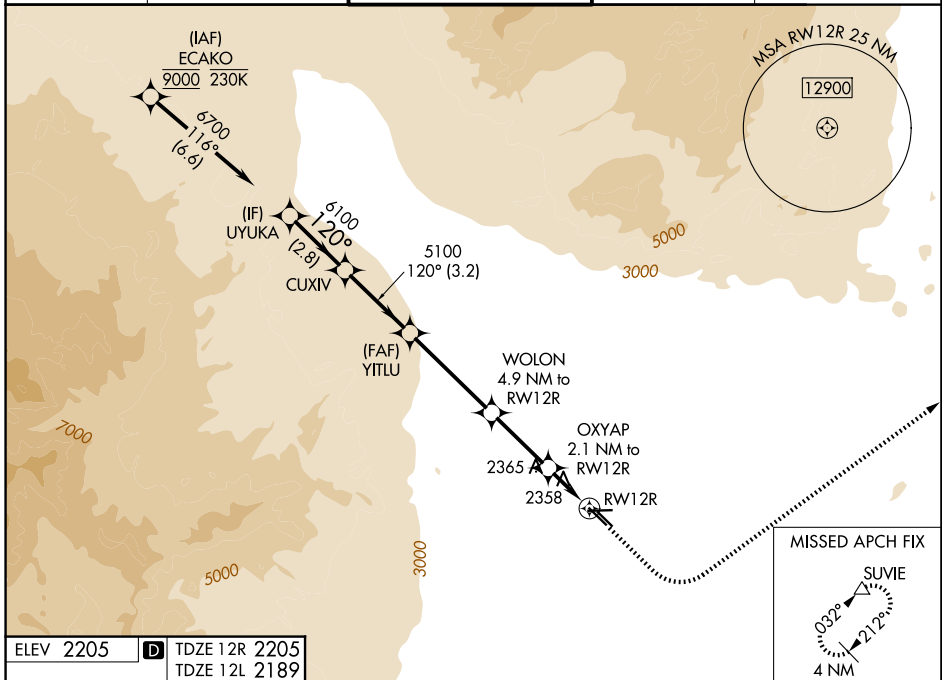
WAAS CH <b>69443</b> <b>W12A</b>	APP CRS <b>120°</b>	Rwy Ldg TDZE Apt Elev	12R <b>5000</b> <b>2205</b> <b>2205</b>	12L <b>4199</b> <b>2189</b> <b>2205</b>
--	------------------------	-----------------------------	--	--

# RNAV (GPS) RWY 12R

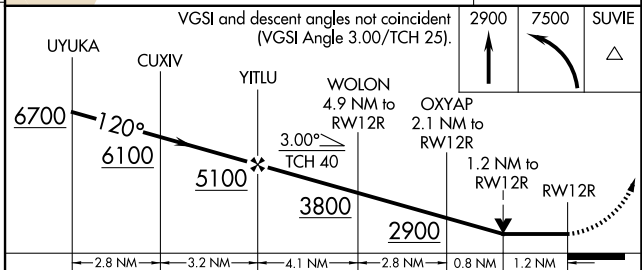
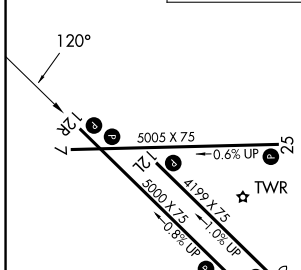
NORTH LAS VEGAS (VGT)

RNP APCH - GPS.		MISSED APPROACH: Climb to 2900 then climbing left turn to 7500 direct SUVIE and hold, continue climb-in-hold to 7500.		
Rwy 12R helicopter visibility reduction below 3/4 SM NA.				

ATIS <b>118.05</b>	LAS VEGAS APP CON <b>119.4 360.85</b>	NORTH LAS VEGAS TOWER* <b>125.7 (CTAF) 360.75</b>	GND CON <b>121.7</b>	UNICOM <b>122.95</b>
-----------------------	--	--	-------------------------	-------------------------



ELEV 2205	<b>D</b>	TDZE 12R 2205	TDZE 12L 2189
-----------	----------	---------------	---------------



	CATEGORY	A	B	C	D
LP	MDA	2620-1	415 (500-1)	2620-1 $\frac{1}{8}$	415 (500-1 $\frac{1}{8}$ )
LNAV	MDA	2820-1	615 (700-1)	2820-1 $\frac{3}{4}$	615 (700-1 $\frac{3}{4}$ )
SIDESTEP	12L	2820-1	631 (700-1)	2820-1 $\frac{3}{4}$ 631 (700-1 $\frac{3}{4}$ )	2820-2 631 (700-2)
CIRCLING		2820-1	615 (700-1)	2840-1 $\frac{3}{4}$ 635 (700-1 $\frac{3}{4}$ )	3540-3 1335 (1400-3)

REIL all rwys **1**  
MIRL all rwys **1**

SW-4, 11 JUN 2026 to 09 JUL 2026

SW-4, 11 JUN 2026 to 09 JUL 2026