

WAAS CH 50220 W01A	APP CRS 008°	Rwy Ldg TDZE Apt Elev	9300 2851 2884
----------------------------------------	------------------------	-----------------------------	-------------------------------------------

RNAV (GPS) RWY 1

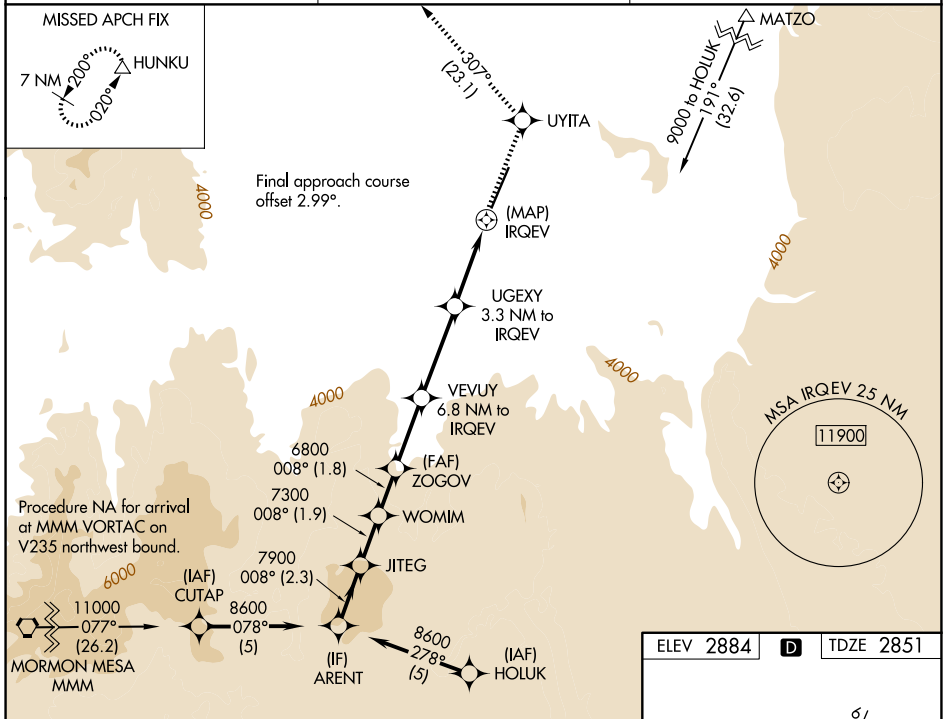
ST GEORGE RGNL (SGU)

RNP APCH-GPS

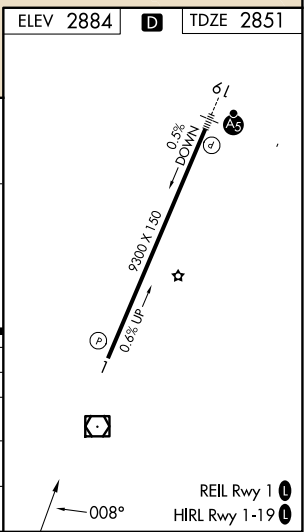
- ▼ Helicopter visibility reduction below 1 SM NA.
- ▲ # Missed approach requires a minimum climb of 225 feet per NM to 6800.
- ⊕ -5°C † Missed approach requires a minimum climb of 220 feet per NM to 6700.

MISSED APPROACH: Climb to 9800 direct UYITA and on track 307° to HUNKU and hold, continue climb-in-hold to 9800.

AWOS-3PT 135.075	LOS ANGELES CENTER 124.2 343.6	UNICOM 123.075 (CTAF) 0
----------------------------	------------------------------------------	-----------------------------------



ARENT		VGSi and RNAV glidepath not coincident (VGSi Angle 3.00 /TCH 50).		9800	UYITA	tr	HUNKU
8600		008°		↑	◆	307°	△
7900		7300		* RNAV only.			
GP 3.60°		6800		◆			
TCH 60		*5700		◆			
2.3 NM		1.9 NM		1.8 NM		2.7 NM	
3.5 NM		3.3 NM		0.5			
CATEGORY	A	B	C	D			
LPV DA#	3170-1 319 (300-1)			NA			
RNAV MDA †	3340-1	489 (500-1)	3340-1 3/8 489 (500-1 3/8)	NA			
RNAV MDA	3760-1 1/4	909 (900-1 1/4)	3760-2 1/2 909 (900-2 1/2)	NA			
CIRCLING	3760-1 1/4 876 (900-1 1/4)	3800-1 1/4 916 (1000-1 1/4)	3860-3 976 (1000-3)	NA			



SW-4, 11 JUN 2026 to 09 JUL 2026

SW-4, 11 JUN 2026 to 09 JUL 2026