

LOC/DME I-BFL 111.9 Chan 56	APP CRS 301°	Rwy Ldg 7430 TDZE 493 Apt Elev 510
---	------------------------	---

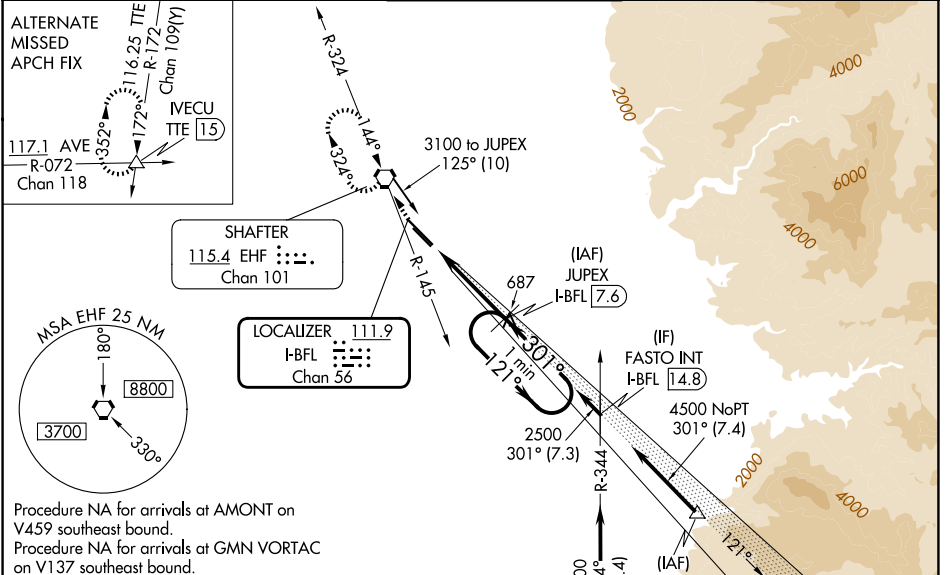
ILS or LOC RWY 30R

MEADOWS FLD (BFL)

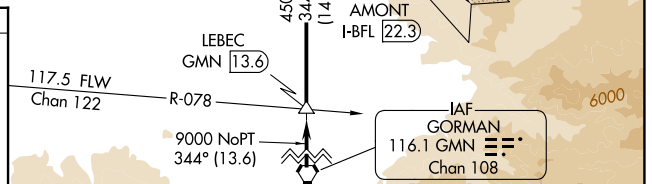
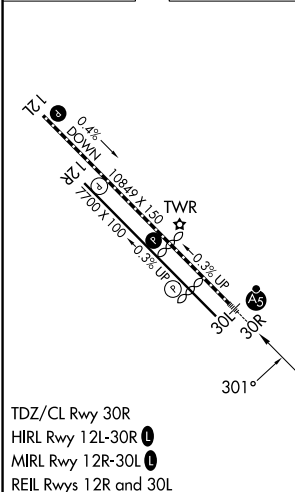
⚠ Circling NA northeast of Rwy 12L-30R. DME Required. VDP NA with Porterville altimeter setting. When local altimeter setting not received, use Porterville altimeter setting: increase DA to 790 and all visibilities to RVR 2200; increase all MDA 100 feet and visibility Cats C and D to RVR 6000. For inop ALS, increase S-LOC 30R Cat A and B visibility to RVR 5000. For inop ALS when using Porterville altimeter setting, increase S-ILS 30R all Cats visibility to RVR 5000.

MALSR
MISSED APPROACH: Climb to 1000 then climbing right turn to 3000 on EHF VORTAC R-145 direct EHF VORTAC and hold, continue climb-in-hold to 3000.

ATIS 118.6	BAKERSFIELD APP CON * 118.9 270.3 (N) 118.8 284.625 (S)	BAKERSFIELD TOWER * 118.1 (CTAF) 257.8	GND CON 121.7	UNICOM 122.95
----------------------	---	--	-------------------------	-------------------------



ELEV 510	D	TDZE 493
----------	----------	----------



1000	3000	EHF	Use I-BFL DME when on the localizer course.	JUPEX I-BFL 7.6	One Minute Holding Pattern
↑	↻	⬠		2500	
*LOC only	I-BFL 1.4	*I-BFL 2.6		2500	
	1.2 NM	5 NM		2500	GS 3.00° TCH 51

TDZ/CL Rwy 30R				
HIRL Rwy 12L-30R				
MIRL Rwy 12R-30L				
REIL Rwy 12R and 30L				
CATEGORY	A	B	C	D
S-ILS 30R	698/18		205 (200-1/2)	
S-LOC 30R	940/24	447 (500-1/2)	940/45	447 (500-7/8)
CIRCLING	960-1	450 (500-1)	960-1 1/2	1060-2
			450 (500-1 1/2)	550 (600-2)

SW-3, 09 JUL 2026 to 06 AUG 2026

SW-3, 09 JUL 2026 to 06 AUG 2026