

WAAS CH <b>61040</b> <b>W12B</b>	APP CRS <b>121°</b>	Rwy Ldg TDZE Apt Elev	<b>7700</b> <b>488</b> <b>510</b>
--	------------------------	-----------------------------	---

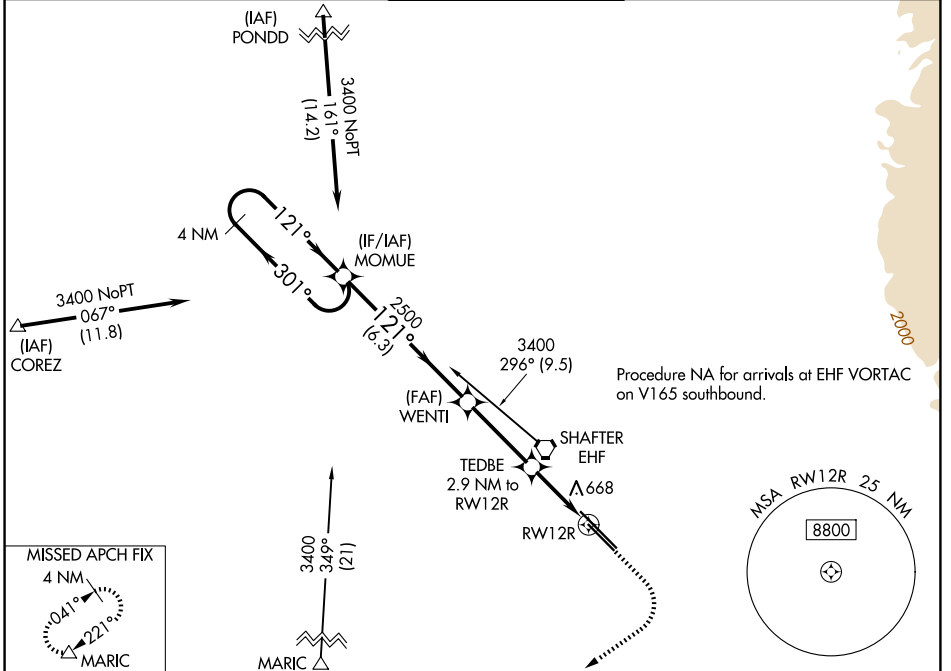
# RNAV (GPS) RWY 12R

MEADOWS FLD (BFL)

**▽** For uncompensated Baro-VNAV systems, LNAV/VNAV NA below -1°C (31°F) or above 54°C (130°F). Circling NA northeast of Rwy 12L-30R. DME/DME RNP-0.3 NA.

**MISSED APPROACH:** Climb to 1000 then climbing right turn to 3500 direct MARIC and hold.

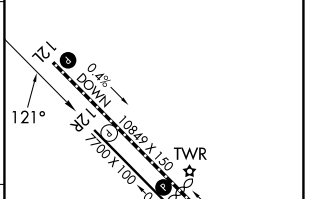
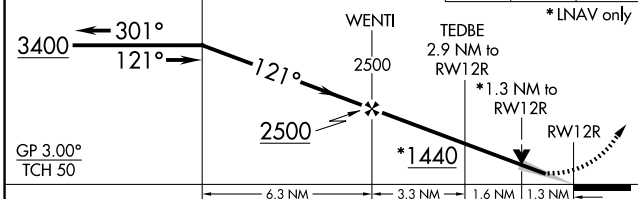
ATIS <b>118.6</b>	BAKERSFIELD APP CON* <b>118.9 270.3 (N)</b> <b>118.8 284.625 (S)</b>	BAKERSFIELD TOWER* <b>118.1 (CTAF) 257.8</b>	GND CON <b>121.7</b>	UNICOM <b>122.95</b>
----------------------	--	---	-------------------------	-------------------------



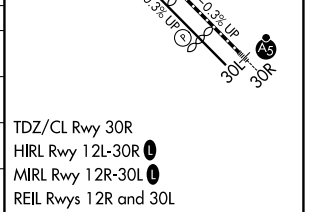
SW-3, 09 JUL 2026 to 06 AUG 2026

SW-3, 09 JUL 2026 to 06 AUG 2026

VGSI and RNAV glidepath not coincident (VGSI Angle 3.00/TCH 25).		1000	3500	MARIC	ELEV	510	<b>D</b>	TDZE	488
--	--	------	------	-------	------	-----	----------	------	-----



CATEGORY	A	B	C	D
LPV DA	738-3/4		250 (300-3/4)	
LNAV/VNAV DA	969-15/8		481 (500-15/8)	
LNAV MDA	920-1	432 (500-1)	920-1 1/4	432 (500-1 1/4)
CIRCLING	960-1	450 (500-1)	960-1 1/2	1060-2 450 (500-1 1/2) 550 (600-2)



TDZ/CL Rwy 30R  
HIRL Rwy 12L-30R **L**  
MIRL Rwy 12R-30L **L**  
REIL Rws 12R and 30L