

# RNAV (GPS) RWY 30R

MEADOWS FLD (BFL)

WAAS CH <b>58118</b> <b>W30A</b>	APP CRS <b>301°</b>	Rwy Ldg <b>7430</b> TDZE <b>493</b> Apt Elev <b>510</b>
--	------------------------	---

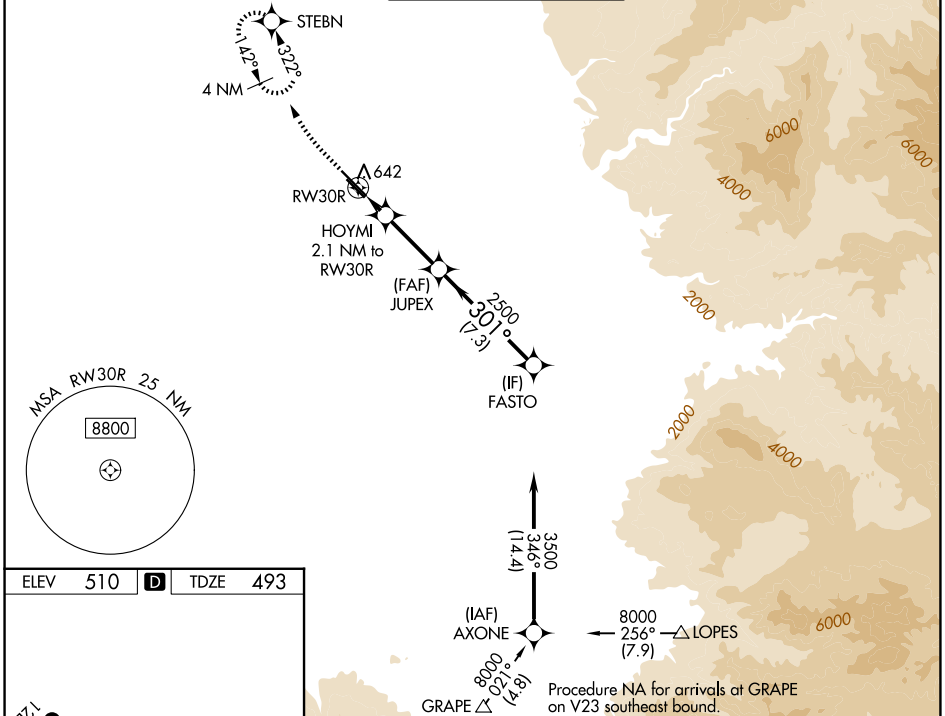
**RNP APCH**

▼ For uncompensated Baro-VNAV systems, LNAV/VNAV NA below 0°C (32°F) or above 54°C (130°F). Circling NA northeast of Rwy 12L-30R. When local altimeter setting not received, use Porterville altimeter setting: increase LPV DA to 790, LNAV/VNAV DA to 990. Increase LNAV/VNAV all Cats visibilities to 1¼ mile; increase all MDA 100 feet and LNAV visibility Cats C and D to RVR 5000. VDP and Baro-VNAV NA when using Porterville altimeter setting. For inop ALS when using Porterville altimeter setting, increase LPV all Cats visibility to RVR 5000 and LNAV Cat C and D visibility to 1½. # RVR 2400 when using Porterville altimeter setting.

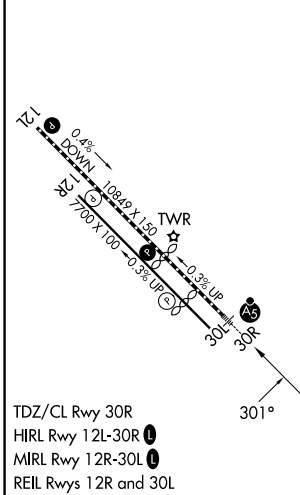


**MISSED APPROACH:**  
Climb to 1000 then climbing right turn to 3000 direct STEBN and hold.

ATIS <b>118.6</b>	BAKERSFIELD APP CON * <b>118.9 270.3 (N)</b> <b>118.8 284.625 (S)</b>	BAKERSFIELD TOWER * <b>118.1 (CTAF) 257.8</b>	GND CON <b>121.7</b>	UNICOM <b>122.95</b>
----------------------	---	--	-------------------------	-------------------------



ELEV <b>510</b>	<b>D</b>	TDZE <b>493</b>
-----------------	----------	-----------------



	1000	3000	STEBN	FASTO
	↑	↪	✧	✧
	*LNAV only	*1.1 NM to RWY 30R	HOYMI 2.1 NM to RWY 30R	JUPEX 2500
			1200*	3500
			2500	
			301°	
				GP 3.00° TCH 51
CATEGORY	A	B	C	D
LPV DA#		698/18	205 (200-½)	
LNAV/VNAV DA		898/45	405 (400-¾)	
LNAV MDA	880/24	387 (400-½)	880/35	387 (400-¾)
CIRCLING	960-1	450 (500-1)	960-1½ 450 (500-1½)	1060-2 550 (600-2)

SW-3, 09 JUL 2026 to 06 AUG 2026

SW-3, 09 JUL 2026 to 06 AUG 2026