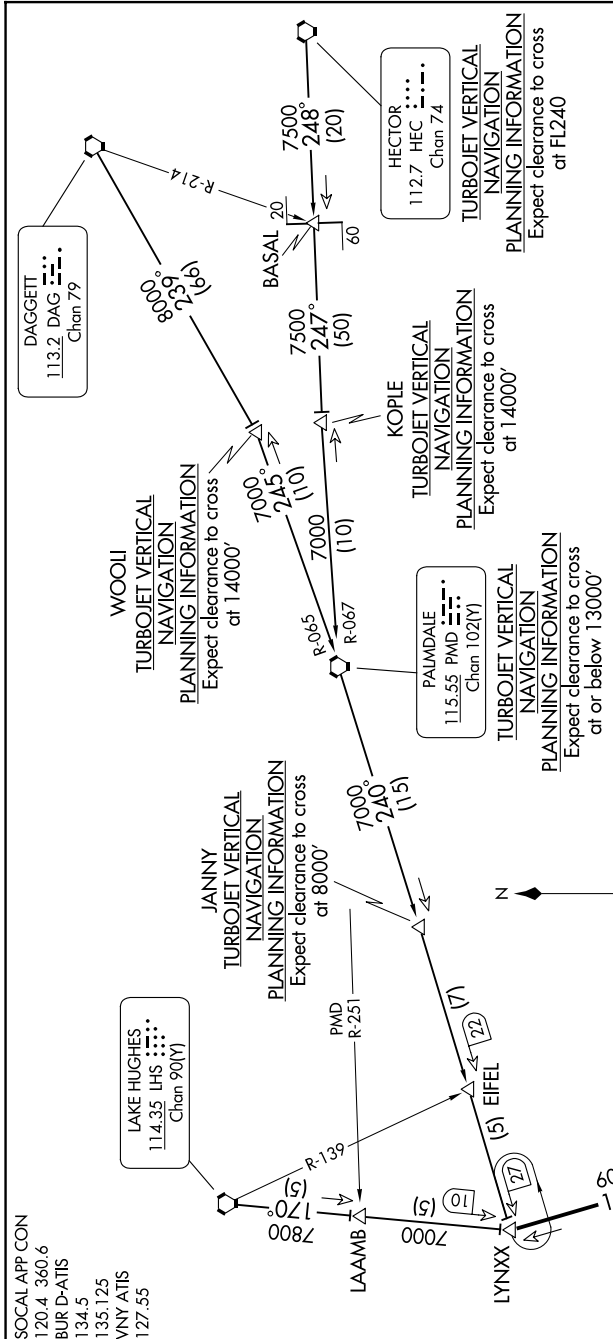


# LYNXX EIGHT ARRIVAL

AL-67 (FAA)

BURBANK, CALIFORNIA

9202 90 01 9202 01 60 8-MS



**ARRIVAL ROUTE DESCRIPTION**

**DAGGETT TRANSITION (DAG.LYNXX8):** From over DAG VORTAC via DAG R-239 and PMD R-065 to PMD VORTAC. Then via PMD R-240 to LYNXX INT. Thence...  
**HECTOR TRANSITION (HEC.LYNXX8):** From over HEC VORTAC via HEC R-248 and PMD R-067 to PMD VORTAC. Then via PMD R-240 to LYNXX INT. Thence...  
**LAKE HUGHES TRANSITION (LHS.LYNXX8):** From over LHS VORTAC via LHS R-170 to LYNXX INT. Thence...  
**PALMDALE TRANSITION (PMD.LYNXX8):** From over PMD VORTAC via PMD R-240 to LYNXX INT. Thence...  
 ... From over LYNXX INT via VNY R-329 to VNY VOR/DME. Expect RADAR vectors to final approach course after VNY VOR/DME.

# LYNXX EIGHT ARRIVAL

BURBANK, CALIFORNIA

SW-3, 09 JUL 2026 to 06 AUG 2026

**NOTE:** DME required for DAGGETT, HECTOR, and PALMDALE Transitions.

**NOTE:** Chart not to scale.