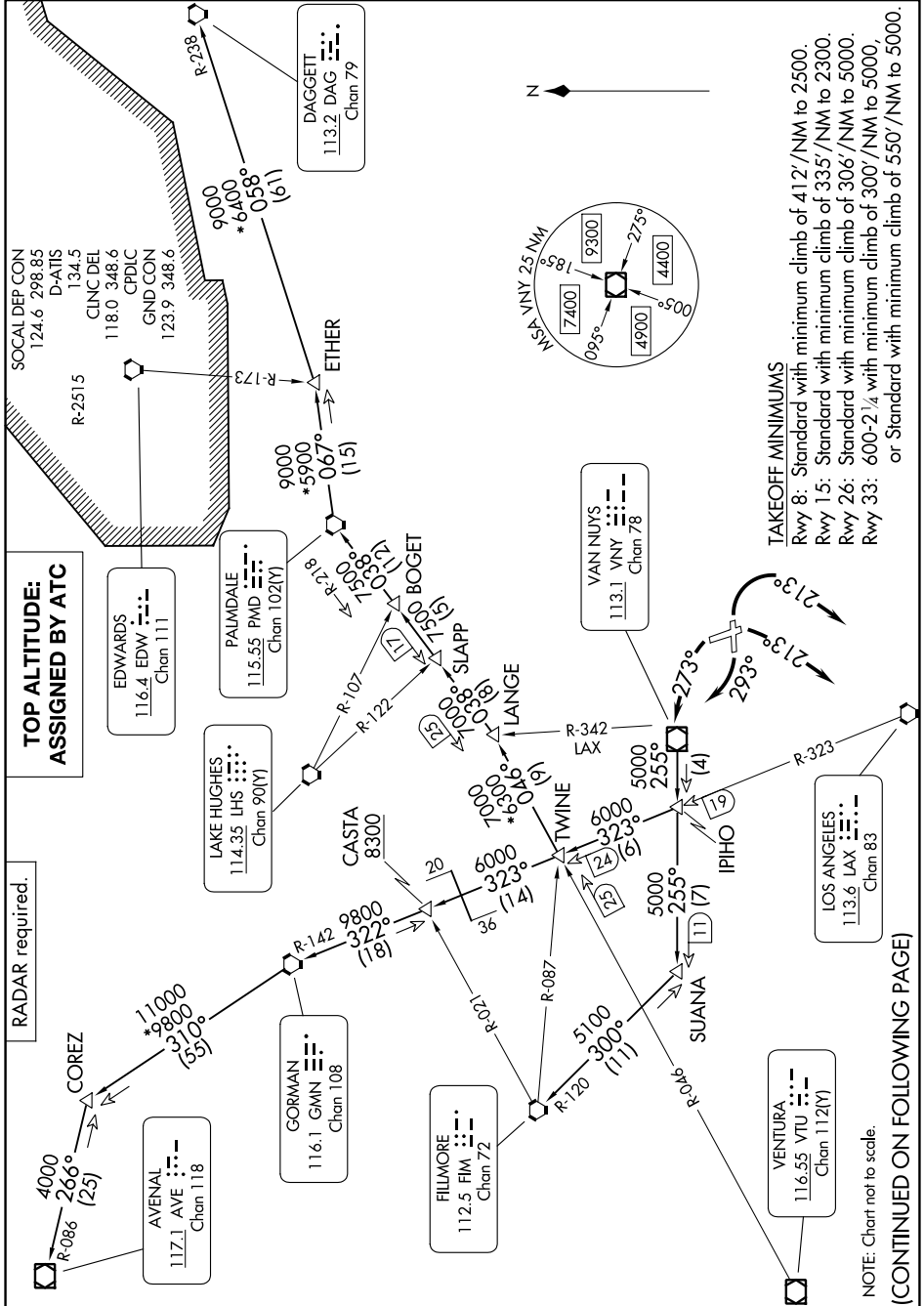


VAN NUYS FOUR DEPARTURE

AL-67 (FAA)

BOB HOPE (BUR)
BURBANK, CALIFORNIA

SW-3, 09 JUL 2026 to 06 AUG 2026



VAN NUYS FOUR DEPARTURE

(VNY4.VNY) 09JUL26

BURBANK, CALIFORNIA
BOB HOPE (BUR)

SW-3, 09 JUL 2026 to 06 AUG 2026



DEPARTURE ROUTE DESCRIPTION

TAKEOFF RUNWAYS 8, 15: Climbing right turn heading 213°, thence . . .

TAKEOFF RUNWAY 26: Climbing right turn heading 293°, thence

TAKEOFF RUNWAY 33: Climbing left turn heading 273°, thence

. . . .For RADAR vector to VNY VOR/DME, then on transition or assigned route.
Maintain ATC assigned altitude.

AVENAL TRANSITION (VNY4.AVE): From over VNY VOR/DME on VNY R-255 and LAX R-323 to TWINE, then on LAX R-323 and GMN R-142 to GMN VORTAC, then on GMN R-310 and AVE R-086 to AVE VOR/DME.

DAGGETT TRANSITION (VNY4.DAG): From over VNY VOR/DME on VNY R-255 and LAX R-323 to TWINE, then on VTU R-046 and PMD R-218 to PMD VORTAC, then on PMD R-067 and DAG R-238 to DAG VORTAC.

FILLMORE TRANSITION (VNY4.FIM): From over VNY VOR/DME on VNY R-255 to SUANA, then on FIM R-120 to FIM VORTAC.

GORMAN TRANSITION (VNY4.GMN): From over VNY VOR/DME on VNY R-255 and LAX R-323 to TWINE, then on LAX R-323 and GMN R-142 to GMN VORTAC.

PALMDALE TRANSITION (VNY4.PMD): From over VNY VOR/DME on VNY R-255 and LAX R-323 to TWINE, then on VTU R-046 and PMD R-218 to PMD VORTAC.

TWINE TRANSITION (VNY4.TWINE): From over VNY VOR/DME on VNY R-255 and LAX R-323 to TWINE.

SW-3, 09 JUL 2026 to 06 AUG 2026

SW-3, 09 JUL 2026 to 06 AUG 2026