

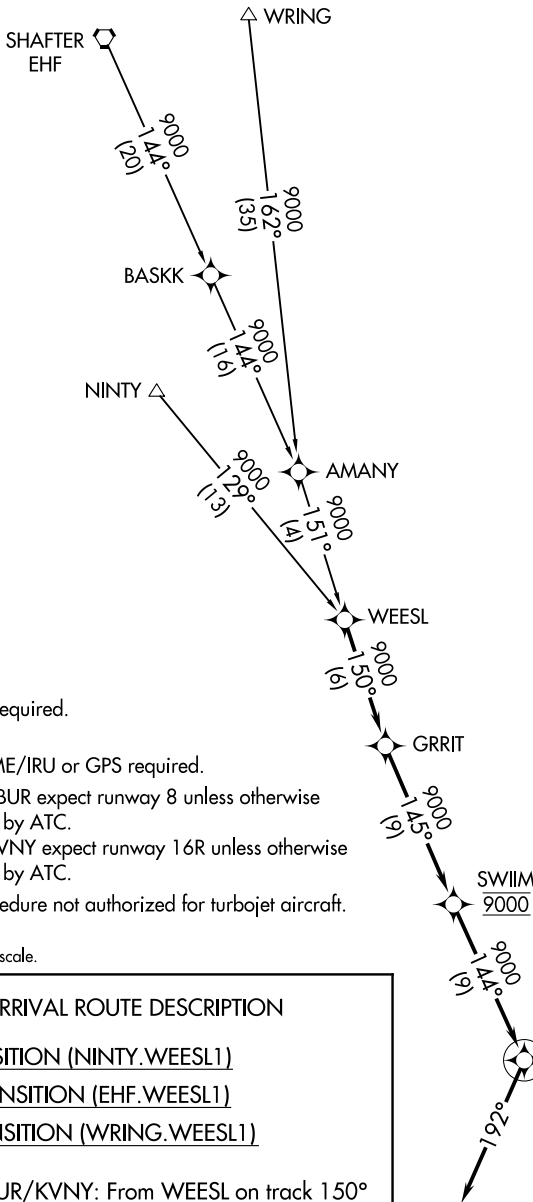
(WEESL.WEESL1) 21168

# WEESL ONE ARRIVAL (RNAV)

AL-67 (FAA)

BURBANK, CALIFORNIA

SOCAL APP CON  
 120.4 360.6  
 BUR D-ATIS  
 134.5  
 VNY ATIS  
 127.55  
 BURBANK TOWER  
 118.7 254.3  
 VAN NUYS TOWER\*  
 119.3 239.0



- NOTE: RADAR required.
- NOTE: RNAV 1.
- NOTE: DME/DME/IRU or GPS required.
- NOTE: Landing BUR expect runway 8 unless otherwise assigned by ATC.
- NOTE: Landing VNY expect runway 16R unless otherwise assigned by ATC.
- NOTE: This procedure not authorized for turbojet aircraft.

NOTE: Chart not to scale.

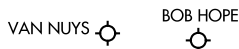
## ARRIVAL ROUTE DESCRIPTION

NINTY TRANSITION (NINTY.WEESL1)

SHAFTER TRANSITION (EHF.WEESL1)

WRING TRANSITION (WRING.WEESL1)

LANDING KBUR/KVNY: From WEESL on track 150° to GRRIT, then on track 145° to cross SWIIM at 9000, then on track 144° to cross LYNXX at 9000, then on track 192°. Expect RADAR vectors to final approach course.



# WEESL ONE ARRIVAL (RNAV)

(WEESL.WEESL1) 10NOV15

BURBANK, CALIFORNIA

SW-3, 09 JUL 2026 to 06 AUG 2026

SW-3, 09 JUL 2026 to 06 AUG 2026