

DREAM SEVEN DEPARTURE (DREAM7.DREAM)

NELLIS AFB (KLSV)

LAS VEGAS, NEVADA

ATIS 270.1
 CLNC DEL
 120.9 289.4
 GND CON
 121.8 275.8
 TOWER
 132.55 327.0
 DEP CON
 135.1 350.225

**TOP ALTITUDE:
 FL190**

[USAF]

Rwy	Knots	60	120	180	240	300	360
* 3 L (a)	V/V(fpm)	305	610	915	1220	1525	1830
* 3 R (b)	V/V(fpm)	251	502	753	1004	1255	1506
† 3 L (c)	V/V(fpm)	498	996	1494	1992	2490	2988
† 3 R (c)	V/V(fpm)	496	992	1488	1984	2480	2976
* 21 L (d)	V/V(fpm)	387	774	1161	1548	1935	2322
* 21 R (d)	V/V(fpm)	393	786	1179	1572	1965	2358
† 21 L (c)	V/V(fpm)	453	906	1359	1812	2265	2718
† 21 R (c)	V/V(fpm)	457	914	1371	1828	2285	2742

NOT FOR CIVIL USE

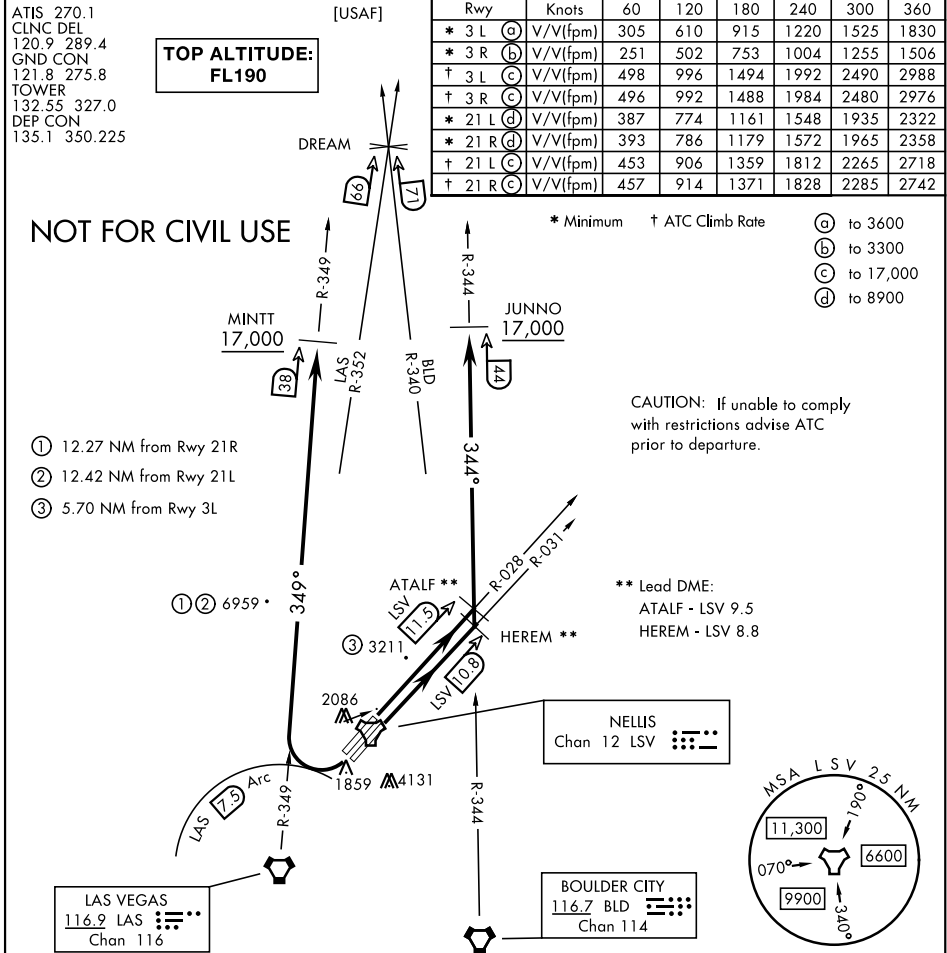
* Minimum † ATC Climb Rate

- (a) to 3600
- (b) to 3300
- (c) to 17,000
- (d) to 8900

CAUTION: If unable to comply with restrictions advise ATC prior to departure.

- ① 12.27 NM from Rwy 21R
- ② 12.42 NM from Rwy 21L
- ③ 5.70 NM from Rwy 3L

** Lead DME:
 ATALF - LSV 9.5
 HEREM - LSV 8.8



SW-4, 09 JUL 2026 to 06 AUG 2026

SW-4, 09 JUL 2026 to 06 AUG 2026

DEPARTURE ROUTE DESCRIPTION

TAKEOFF RWY 3L: Fly runway heading to intercept the LSV TACAN R-028 then direct ATALF, intercept the BLD VORTAC R-344 then direct JUNNO, cross JUNNO at or above 17,000, thence...

TAKEOFF RWY 3R: Fly runway heading to intercept the LSV TACAN R-031 then direct HEREM, intercept the BLD VORTAC R-344 then direct JUNNO, cross JUNNO at or above 17,000, thence...

TAKEOFF RWY 21L/R: Turn right to intercept LAS VORTAC R-349 outbound. Remain North of LAS 7.5 DME turning Northbound. Intercept LAS R-349 between 5000 and 6000, do not proceed West of LAS R-349. Cross MINTT at above 17,000, thence...

...maintain FL190, then via assigned route.

DREAM SEVEN DEPARTURE (DREAM7.DREAM)

Amdt 7 12JUN25

LAS VEGAS, NEVADA

NELLIS AFB (KLSV)