

LAS VEGAS, NEVADA

HI-ILS or LOC Z RWY 21L

LOC I-DIQ 109.1	APCH CRS 209°	Rwy ldg 21L	21R
		TDZE 10,051	10,120
		Arpt Elev 1869	1869

(USAF)

NELLIS AFB (KLSV)

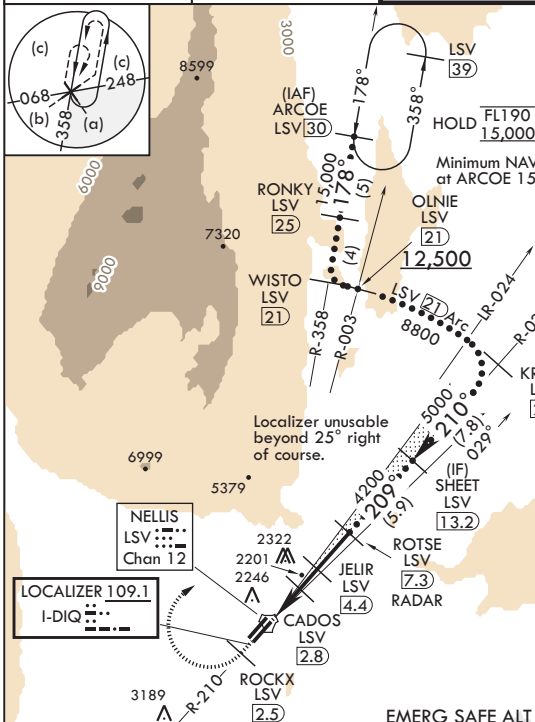
DME or RADAR required.

- * When ALS inop, increase RVR to 40, vis to 3/4 mile.
- ** When ALS inop, increase vis to 1 3/8 miles.
- *** Circling not authorized SE of Rwy 3R-21L.



MISSED APPROACH: Climb to 15,000, intercept LSV TACAN R-210 to 2.5 DME (ROCKX), then climbing right turn heading 043° to intercept LSV R-358 to ARCOE and hold, climb in hold to 15,000. Missed approach not for civil use.

ATIS 270.1	APP CON 124.95 273.55	TOWER 132.55 327.0	GND CON 121.8 275.8	CLNC DEL* 120.9 289.4
----------------------	---------------------------------	------------------------------	-------------------------------	---------------------------------



Knots	60	120	180	240	300	360
V/V(fpm)	372	744	1116	1488	1860	2232
Min climb of 372 ft/NM to 9400 - Controlling Obst 5739						

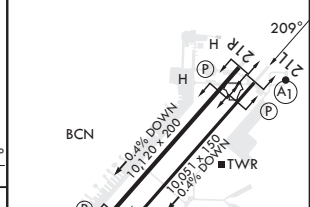
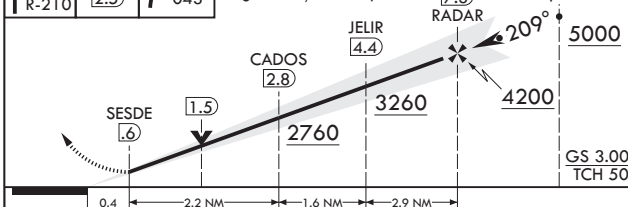
Missed Approach requires use of RNAV or ATC RADAR monitoring.

CAUTION: Missed approach with 200 ft/NM climb gradient not available.

SW-4, 09 JUL 2026 to 06 AUG 2026

SW-4, 09 JUL 2026 to 06 AUG 2026

15,000 LSV	ROCKX LSV R-210 [2.5]	VGSI and ILS glidepath not coincident (VGSI Angle 3.00/TCH 54).	ROTSE RADAR [7.3]	SHEET [13.2] Intcp Lczr	ELEV 1869	TDZE 21L 1865	TDZE 21R 1869
------------	-----------------------	---	-------------------	-------------------------	-----------	---------------	---------------



CATEGORY	C	D	E		
S-ILS 21L*	2065/24	200	(200-½)		
S-LOC 21L**	2360/50	495	(500-1)		
SIDESTEP 21R	2380-1 3/8	511	(600-1 3/8)		
CIRCLING***	2560-2 691 (700-2)	2840-3 971 (1000-3)	3140-3 1271 (1300-3)		
FAF to MAP 6.7 NM					
Knots	120	140	160	180	200
Min:Sec	3:21	2:52	2:31	2:14	2:01

LAS VEGAS, NEVADA

36°14'N - 115°02'W

NELLIS AFB (KLSV)

Amdt 10 10JUL25

HI-ILS or LOC Z RWY 21L