

LAS VEGAS, NEVADA

ILS or LOC X RWY 21L

LOC I-DIQ 109.1	APCH CRS 209°	Rwy ldg 10,051	21L 10,120	21R 1869
		TDZE 1865		
		Arpt Elev 1869		

(USAF)

NELLIS AFB (KLSV)

DME or RADAR required.

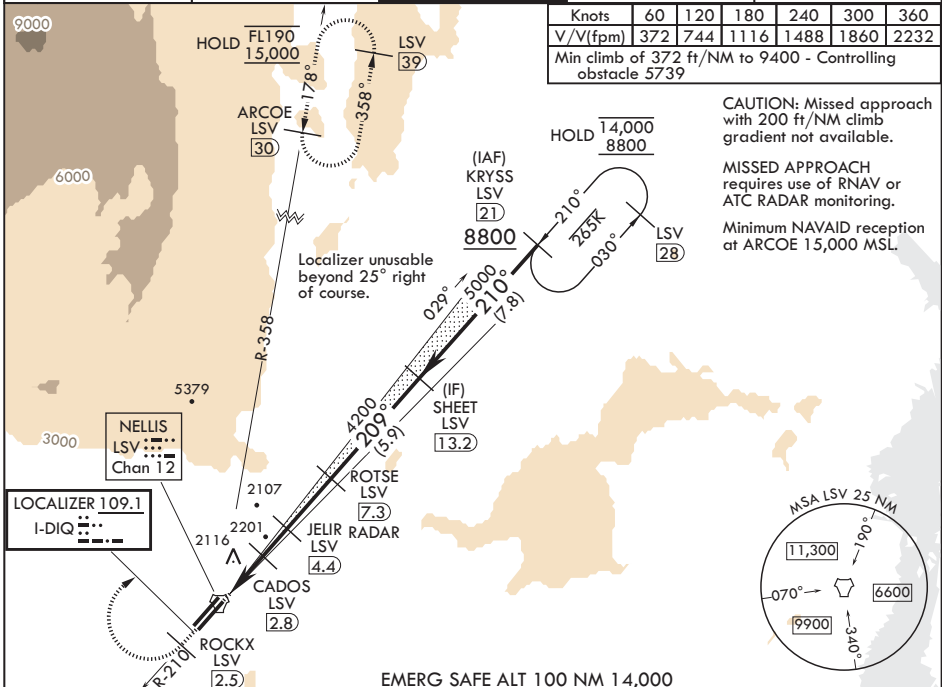
Rwy 21L ALSF-1

MISSED APPROACH: Climb to 15,000, intercept LSV TACAN R-210 to 2.5 DME (ROCKX), then climbing right turn heading 043° to intercept LSV R-358 to ARCOE and hold, climb in hold to 15,000. Missed approach not for civil use.

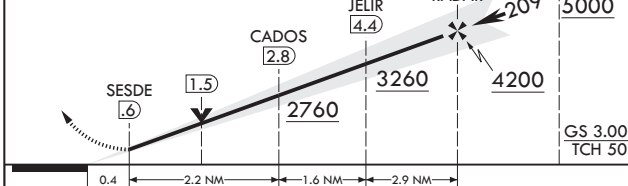
- * When ALS inop, increase RVR to 40, vis to 3/4 mile.
- ** When ALS inop, increase CAT AB RVR to 55, vis to 1 mile, CAT CDE vis to 1 3/8 miles.
- *** Circling not authorized SE of Rwy 3R-21L.

ATIS 270.1	APP CON 124.95 273.55	TOWER 132.55 327.0	GND CON 121.8 275.8	CLNC DEL* 120.9 289.4
----------------------	---------------------------------	------------------------------	-------------------------------	---------------------------------

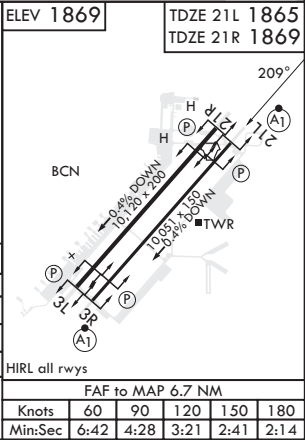
	Knots	60	120	180	240	300	360
V/V(fpm)	372	744	1116	1488	1860	2232	
Min climb of 372 ft/NM to 9400 - Controlling obstacle 5739							



15,000 LSV R-210	ROCKX LSV 2.5	hdg 043°	VGSI and ILS glidepath not coincident (VGSI angle 3.00/TCH 54).	ROTSE LSV 7.3	SHEET LSV 13.2	ELEV 1869	TDZE 21L 1865	TDZE 21R 1869
				RADAR	Intep Lczr			



CATEGORY	A	B	C	D	E
S-ILS 21L*	2065/24		200	(200-½)	
S-LOC 21L**	2360/24	495 (500-½)	2360/50	495	(500-1)
SIDESTEP 21R	2380-1	511 (600-1)	2380-1¾	511	(600-1¾)
CIRCLING***	2400-1 531 (600-1)	2460-1 591 (600-1)	2560-2 691 (700-2)	2840-3 971 (1000-3)	3140-3 1271 (1300-3)



LAS VEGAS, NEVADA

36°14'N - 115°02'W

NELLIS AFB (KLSV)

Amdt 11 10JUL25

ILS or LOC X RWY 21L

SW-4, 09 JUL 2026 to 06 AUG 2026

SW-4, 09 JUL 2026 to 06 AUG 2026