

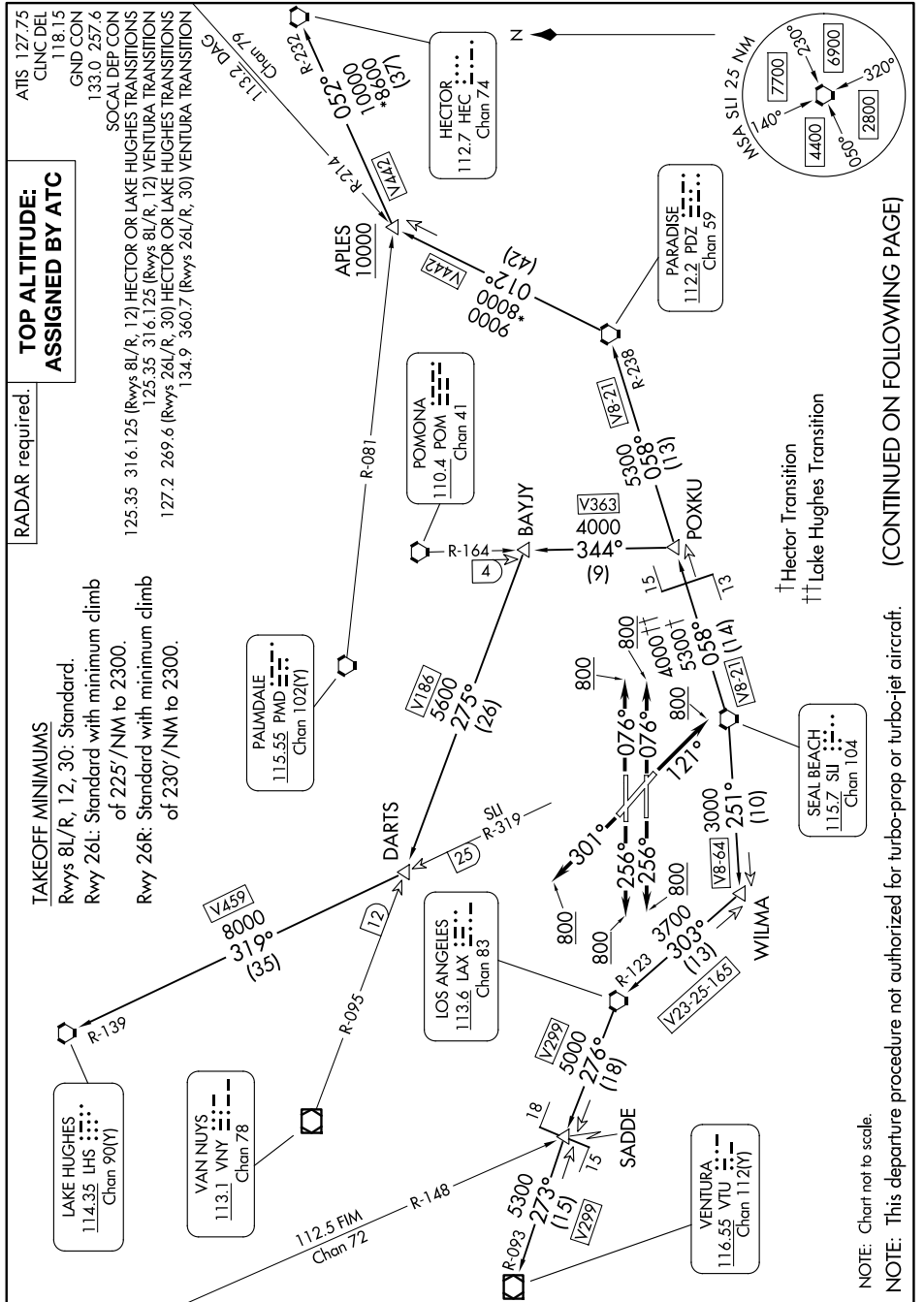
ANAHEIM TWO DEPARTURE

AL-236 (FAA)

LONG BEACH (DAUGHERTY FLD) (LGB)

LONG BEACH, CALIFORNIA

SW-3, 09 JUL 2026 to 06 AUG 2026 13:00M



ANAHEIM TWO DEPARTURE

LONG BEACH, CALIFORNIA

LONG BEACH (DAUGHERTY FLD) (LGB)

(CONTINUED ON FOLLOWING PAGE)

SW-3, 09 JUL 2026 to 06 AUG 2026



DEPARTURE ROUTE DESCRIPTION

TAKEOFF RUNWAYS 8L/R: Climb heading 076° to 800, thence. . . .

TAKEOFF RUNWAY 12: Climb heading 121° to 800, thence. . . .

TAKEOFF RUNWAYS 26L/R: Climb heading 256° to 800, thence. . . .

TAKEOFF RUNWAY 30: Climb heading 301° to 800, thence. . . .

HECTOR or LAKE HUGHES TRANSITION: Expect vectors to SLI VORTAC.

VENTURA TRANSITION: Expect vectors to LAX VORTAC.

. . . on (transition) or (assigned route) maintain ATC assigned altitude and expect filed altitude 10 minutes after departure.

HECTOR TRANSITION (ANAHM2.HEC): From over SLI VORTAC on SLI R-058 and PDZ R-238 to PDZ VORTAC, then on PDZ R-012 to APLES, then on HEC R-232 to HEC VORTAC.

LAKE HUGHES TRANSITION (ANAHM2.LHS): From over SLI VORTAC on SLI R-058 and PDZ R-238 to POXKU, then on POM R-164 to BAYJY, then on VNY R-095 to DARTS, then on LHS R-139 to LHS VORTAC.

VENTURA TRANSITION (ANAHM2.VTU): From over SLI VORTAC on SLI R-251 to WILMA, then on LAX R-123 to LAX VORTAC, then on LAX R-276 to SADDE, then on VTU R-093 to VTU VOR/DME.

SW-3, 09 JUL 2026 to 06 AUG 2026

SW-3, 09 JUL 2026 to 06 AUG 2026