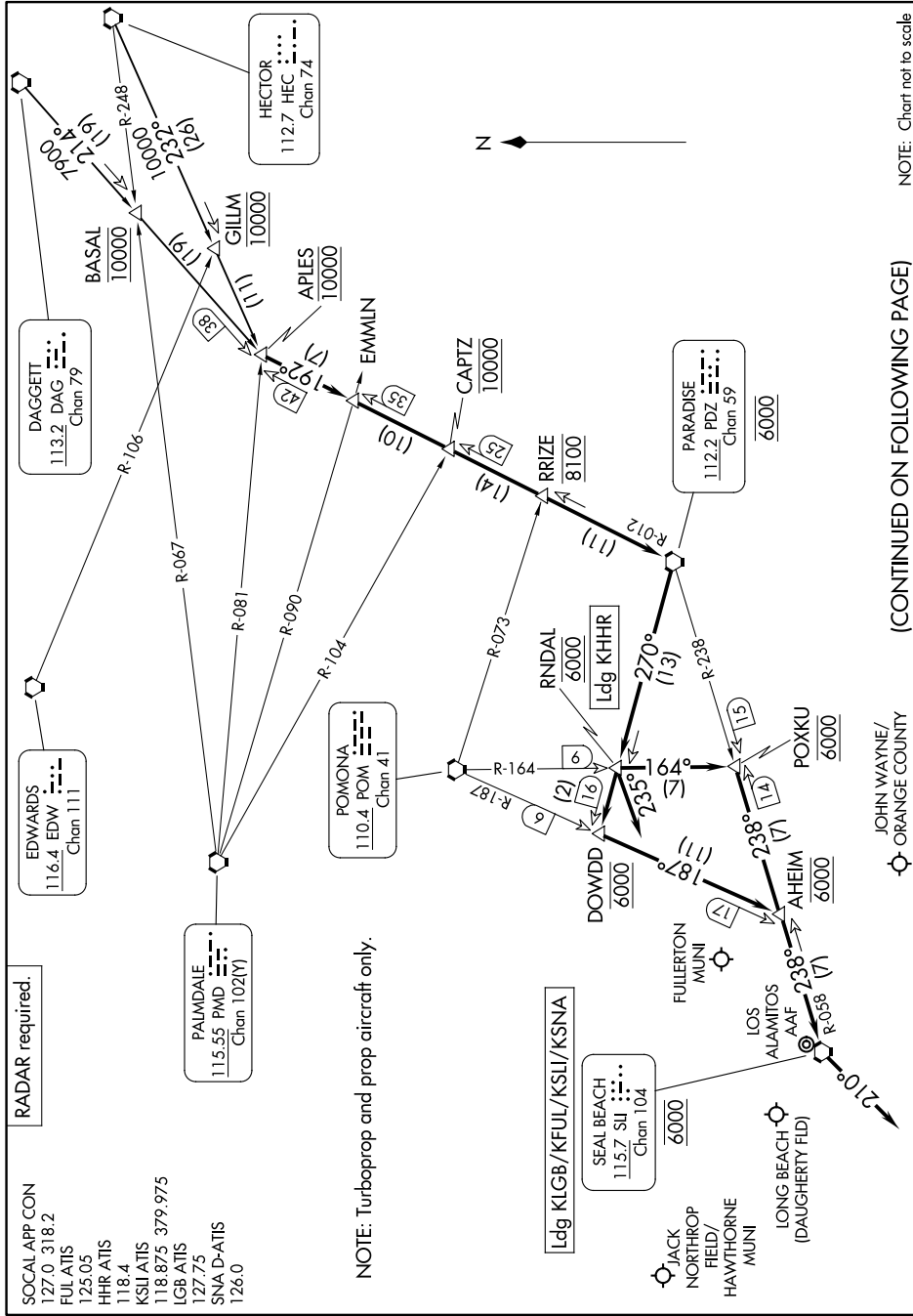


EMMLN THREE ARRIVAL

SW-3, 09 JUL 2026 to 06 AUG 2026



NOTE: Chart not to scale

(CONTINUED ON FOLLOWING PAGE)

JOHN WAYNE/
ORANGE COUNTY

SW-3, 09 JUL 2026 to 06 AUG 2026

EMMLN THREE ARRIVAL

ARRIVAL ROUTE DESCRIPTION

DAGGETT TRANSITION (DAG.EMMLN3): From over DAG VORTAC on DAG R-214 to APLES. Thence. . . .

HECTOR TRANSITION (HEC.EMMLN3): From over HEC VORTAC on HEC R-232 to APLES. Thence. . . .

LANDING LGB/FUL/SLI: From over APLES on PARADISE VORTAC (PDZ) R-012 to cross CAPTZ at 10000, then on PDZ R-012 to cross RRIZE at 8100, then on PDZ R-012 to cross PDZ VORTAC at 6000, then on PDZ R-270 to cross DOWDD at 6000, then on POMONA VORTAC (POM) R-187 to cross AHEIM at 6000, then on SEAL BEACH VORTAC (SLI) R-058 to cross SLI VORTAC at 6000.

LANDING LGB: From over SLI VORTAC, fly heading 210°, expect RADAR vectors to final approach course.

LANDING FUL: From over SLI VORTAC, expect VOR-A approach.

LANDING SLI: From over SLI VORTAC, expect VOR or TACAN RWY 22L approach or RADAR vectors to final approach course.

LANDING HHR: From over APLES on PARADISE VORTAC (PDZ) R-012 to cross CAPTZ at 10000, then on PDZ R-012 to cross RRIZE at 8100, then on PDZ R-012 to cross PDZ VORTAC at 6000, then on PDZ R-270 to cross RNDAL at 6000, then fly heading 235°. Expect RADAR vectors to final approach course.

LANDING SNA: From over APLES on PARADISE VORTAC (PDZ) R-012 to cross CAPTZ at 10000, then on PDZ R-012 to cross RRIZE at 8100, then on PDZ R-012 to cross PDZ VORTAC at 6000, then on PDZ R-270 to cross RNDAL at 6000, then on POM R-164 to cross POXKU at 6000, then on SLI R-058 to cross SLI VORTAC at 6000. Expect RADAR vectors to final approach course.

SW-3, 09 JUL 2026 to 06 AUG 2026

SW-3, 09 JUL 2026 to 06 AUG 2026