

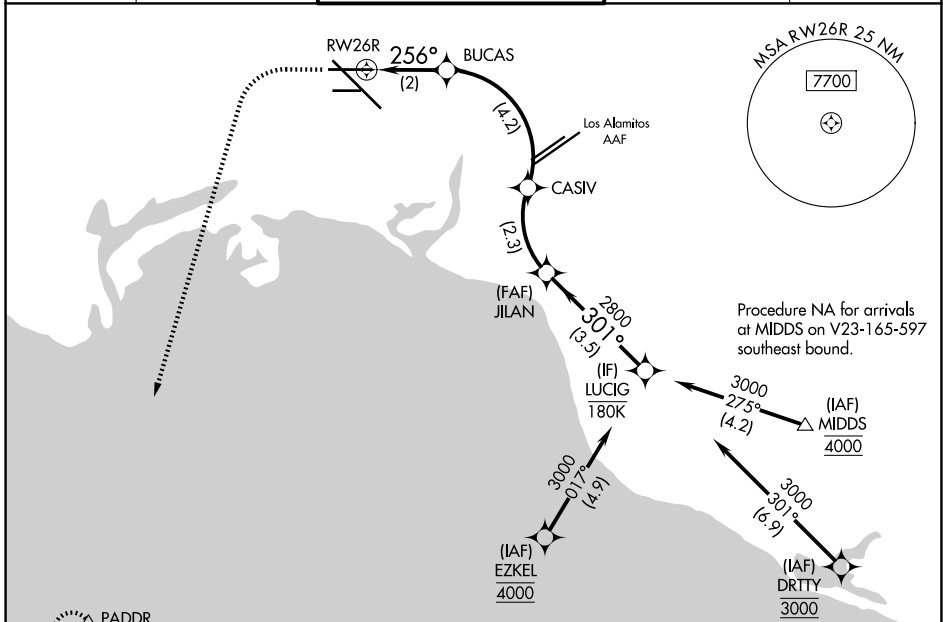
APP CRS	Rwy Ldg	<b>5660</b>
<b>256°</b>	TDZE	<b>48</b>
	Apt Elev	<b>60</b>

# RNAV (RNP) RWY 26R

LONG BEACH (DAUGHERTY FLD) (LGB)

RNP AR APCH - GPS, RF. Authorization required.	MISSED APPROACH: Climb to 800 then climbing left turn to 3000 direct PADDR and hold, continue climb-in-hold to 3000.
▼ For uncompensated Baro-VNAV systems, procedure NA below 4°C or above 54°C.	

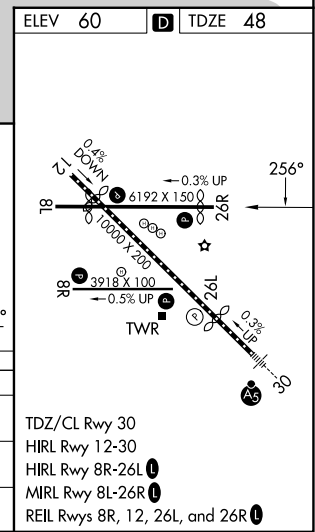
ATIS <b>127.75</b>	SOCAL APP CON <b>125.35 316.125</b>	LONG BEACH TOWER ★ <b>120.5 257.6 (12)</b> <b>119.4 (CTAF) 0 257.6 (30)</b>	GND CON <b>133.0 257.6</b>	UNICOM <b>122.95</b>
-----------------------	--	---	-------------------------------	-------------------------



SW-3, 09 JUL 2026 to 06 AUG 2026

SW-3, 09 JUL 2026 to 06 AUG 2026

ELEV 60	TDZE 48			
800	3000	PADDR	VGSI and RNAV glidepath not coincident (VGSI Angle 3.10/TCH 62).	LUCIG
CATEGORY	A	B	C	D
RNP 0.15 DA		324-7/8	276 (300-7/8)	
RNP 0.30 DA		415-1	367 (400-1)	
<b>AUTHORIZATION REQUIRED</b>				



TDZ/CL Rwy 30  
HIRL Rwy 12-30  
HIRL Rwy 8R-26L  
MRL Rwy 8L-26R  
REIL Rwy 8R, 12, 26L, and 26R