

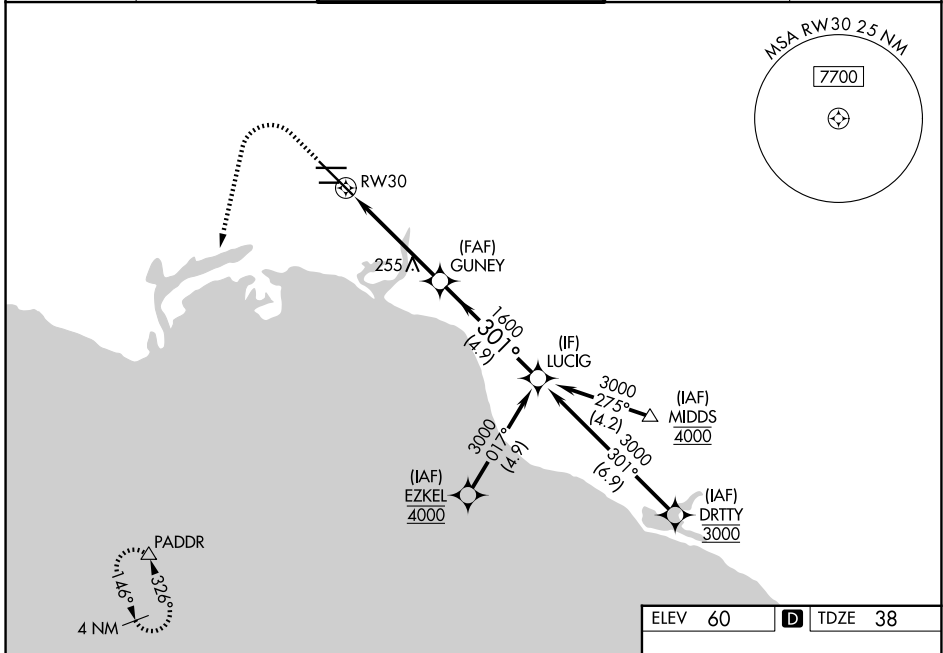
WAAS CH 99521 W30A	APP CRS 301°	Rwy Ldg TDZE Apt Elev	7414 38 60
--	------------------------	-----------------------------	---------------------------------------

RNAV (GPS) Z RWY 30

LONG BEACH (DAUGHERTY FLD) (LGB)

RNP APCH. ▼ For uncompensated Baro-VNAV systems, LNAV/VNAV NA below 4°C or above 54°C. For inop ALS, increase LNAV Cat C and D visibility to 1½ SM.	MALSR 	MISSED APPROACH: Climb to 800 then climbing left turn to 3000 direct PADDR and hold
--	-----------	---

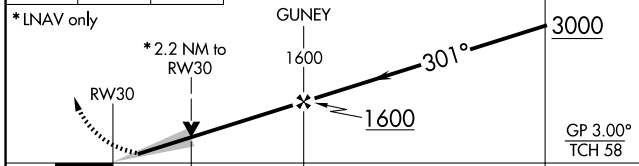
ATIS 127.75	SOCAL APP CON 125.35 316.125	LONG BEACH TOWER ★ 120.5 257.6 (12) 119.4 (CTAF) 257.6 (30)	GND CON 133.0 257.6	UNICOM 122.95
-----------------------	--	---	-------------------------------	-------------------------



SW-3, 09 JUL 2026 to 06 AUG 2026

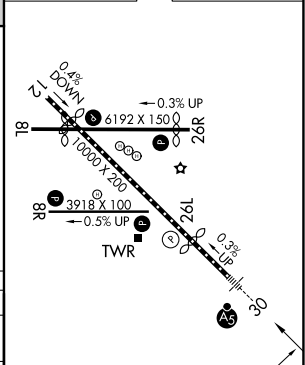
SW-3, 09 JUL 2026 to 06 AUG 2026

800	3000	PADDR	VGSI and RNAV glidepath not coincident (VGSI Angle 3.00/TCH 64).



CATEGORY	A	B	C	D
LPV DA	261/18 223 (300-½)			
LNAV/VNAV DA	568/55 530 (600-1)			
LNAV MDA	520/24 482 (500-½)	520/50 482 (500-1)		
CIRCLING	840-1 780 (800-1)	840-1½ 780 (800-1½)		

ELEV 60	D TDZE 38
---------	------------------



TDZ/CL Rwy 30
HIRL Rwy 12-30
HIRL Rwy 8R-26L
MIRL Rwy 8L-26R
REIL Rws 8R, 12, 26L, and 26R