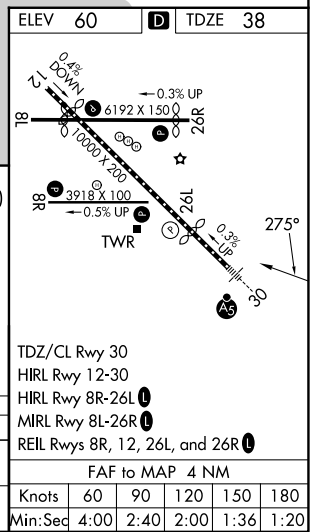
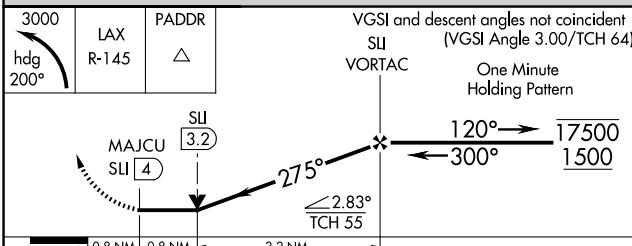
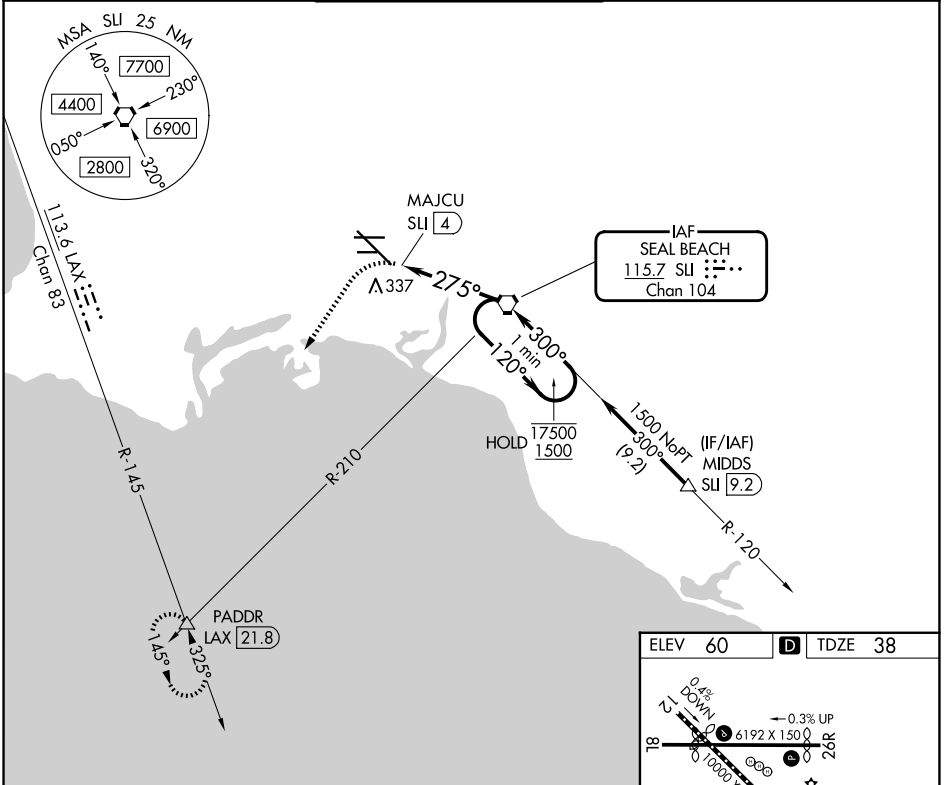


VORTAC SLI 115.7 Chan 104	APP CRS 275°	Rwy Ldg TDZE 38 Apt Elev 60	7414
---	------------------------	---	-------------

VOR or TACAN RWY 30

LONG BEACH (DAUGHERTY FLD) (L.G.B)

<p>Rwy 30 helicopter visibility reduction below RVR 4000 NA. Inop table does not apply.</p>		MISSED APPROACH: Climbing left turn to 3000 on heading 200° and LAX VORTAC R-145 to PADDR INT/LAX 21.8 DME and hold.		
		ATIS 127.75	SOCAL APP CON 125.35 316.125	LONG BEACH TOWER ★ 120.5 257.6 (12) 119.4 (CTAF) 257.6 (30)



SW-3, 09 JUL 2026 to 06 AUG 2026

SW-3, 09 JUL 2026 to 06 AUG 2026