

IMPERIAL BEACH, CALIFORNIA

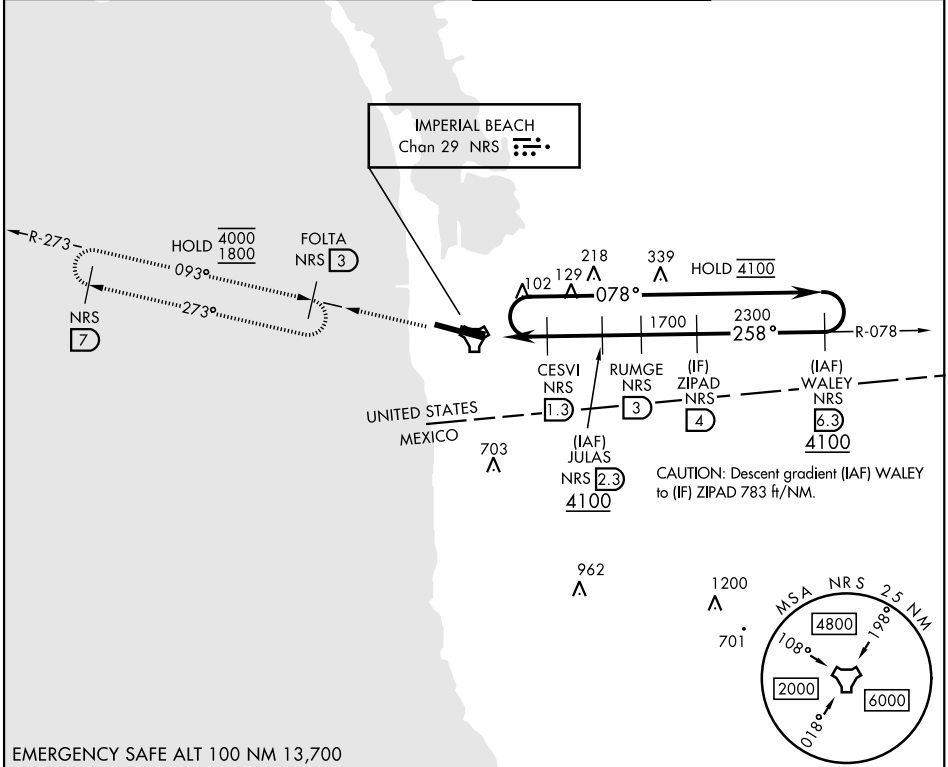
COPTER TACAN RWY 27

IMPERIAL BEACH NOLF (REAM FIELD) (KNRS)

TACAN NRS Chan 29	APCH CRS 258°	Rwy Idg TDZE Arpt Elev 4998 23 23
-----------------------------	-------------------------	---

[USN]

RADAR required		MISSED APPROACH: Climb to 1800 on NRS TACAN R-078 to NRS and R-273 to FOLTA. Continue climb-in-hold to 1800.	
▼ Limit all segments to 90 KIAS.			
ATIS ★ /ASOS 276.2	SOCAL APP CON 125.15 317.55	IMPERIAL BEACH TOWER ★ 120.65 239.25	GND CON 285.575



CAUTION: Descent gradient (IAF) WALEY to (IF) ZIPAD 783 ft/NM.

SW-3, 09 JUL 2026 to 06 AUG 2026

SW-3, 09 JUL 2026 to 06 AUG 2026

EMERGENCY SAFE ALT 100 NM 13,700

<p>1800 NRS R-078</p> <p>NRS</p> <p>FOLTA NRS 03</p> <p>ELEV 23</p> <p>TDZE 23</p>							
<table border="1"> <tr> <td>CATEGORY</td> <td colspan="2">COPTER</td> </tr> <tr> <td>H-27</td> <td>400-1/2</td> <td>377 (400-1/2)</td> </tr> </table>	CATEGORY	COPTER		H-27	400-1/2	377 (400-1/2)	
CATEGORY	COPTER						
H-27	400-1/2	377 (400-1/2)					

HIRL Rwy 9-27

IMPERIAL BEACH, CALIFORNIA

32°34'N-117°07'W

IMPERIAL BEACH NOLF (REAM FIELD) (KNRS)

Amdt 7 19FEB26

COPTER TACAN RWY 27