

HI-TACAN Y RWY 25

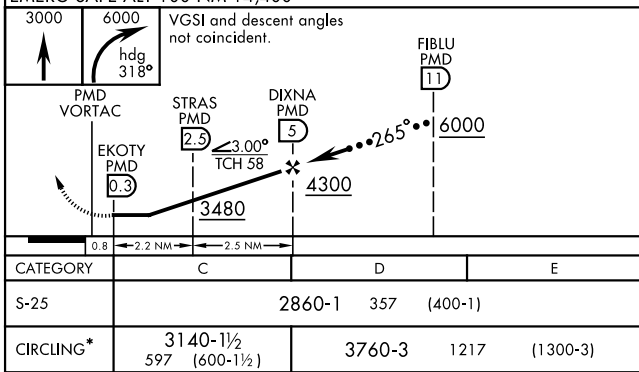
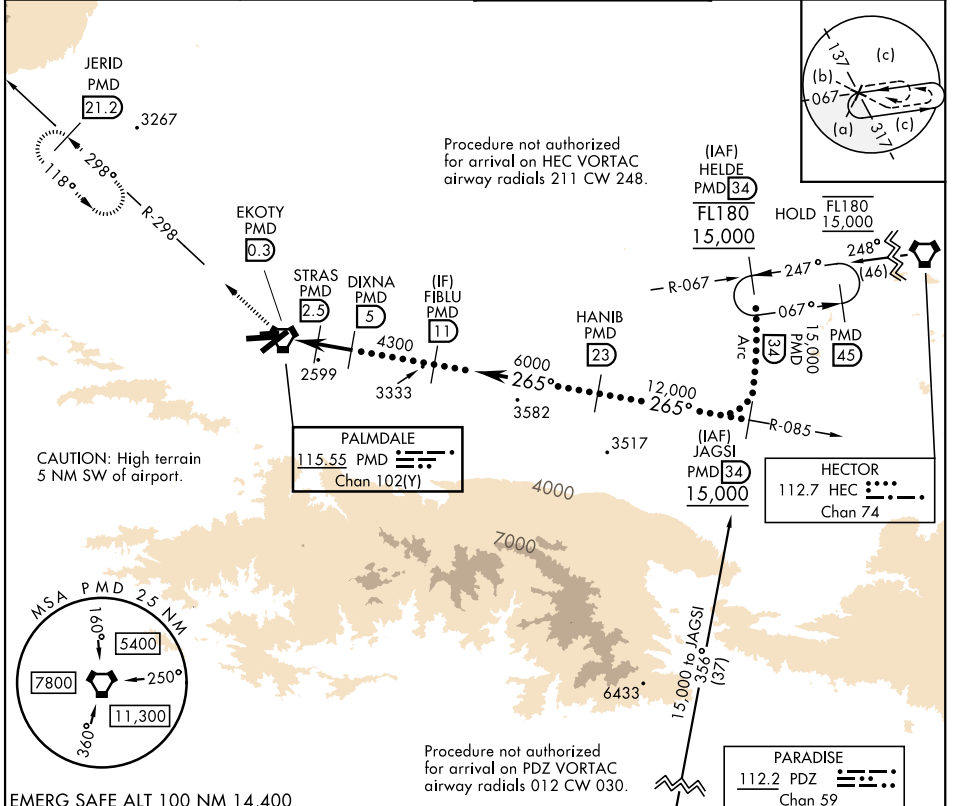
TACAN PMD Chan 102(Y)	APCH CRS 265°	Rwy Idg 12,002 TDZE 2503 Arprt Elev 2543
---------------------------------	-------------------------	---

[USAF]

PALMDALE USAF PLANT 42 (KPMDD)

∇ * Circling not authorized S of Rwy 4 and 25.
▲ MISSED APPROACH: Climb to 3000 then climbing right turn to 6000 on heading 318° and on PMD VORTAC R-298 to JERID INT/PMD 21.2 DME and hold.

ATIS 118.275	JOSHUA APP CON 124.55 363.0	TOWER★ 123.7 (CTAF) 317.6	GND CON 121.9 317.6
------------------------	---------------------------------------	-------------------------------------	-------------------------------



ELEV	2543	TDZE	2503
------	------	------	------

HI-TACAN Y RWY 25

SW-3, 09 JUL 2026 to 06 AUG 2026

SW-3, 09 JUL 2026 to 06 AUG 2026