

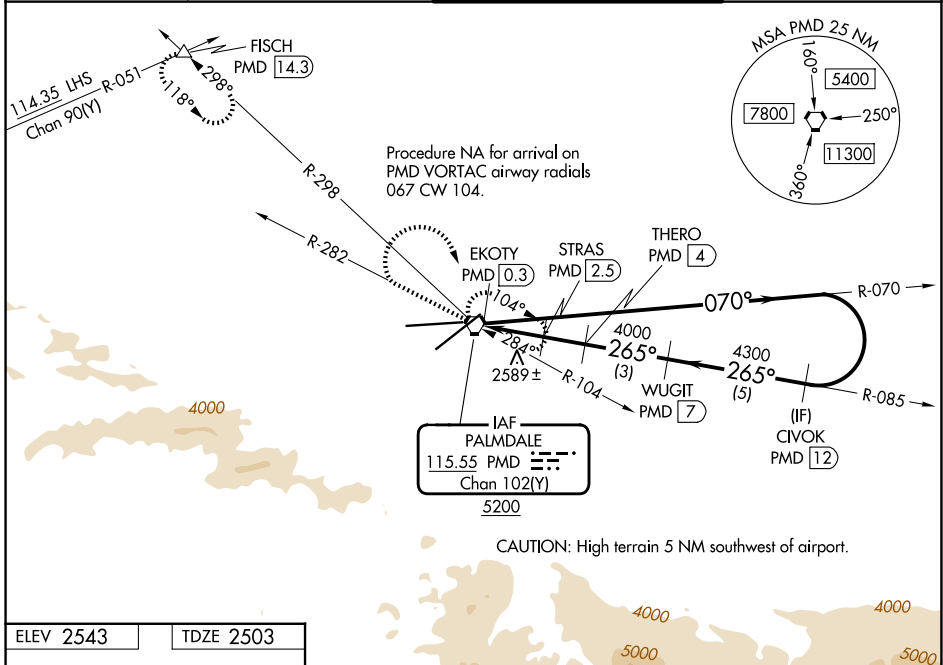
VORTAC PMD <b>115.55</b> Chan <b>102</b> (Y)	APP CRS <b>265°</b>	Rwy Ldg TDZE Apt Elev <b>12002</b> <b>2503</b> <b>2543</b>
--	------------------------	---

# VOR or TACAN Z RWY 25

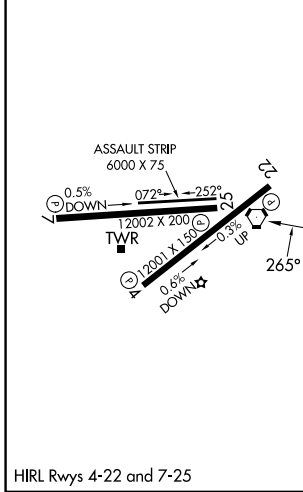
PALMDALE USAF PLANT 42 (PMD)

DME required.	MISSED APPROACH: Climb to 5000 on PMD VORTAC R-282 then climbing right turn to 7000 direct PMD VORTAC and hold. (TACAN aircraft climbing right turn to 6700 on PMD VORTAC R-298 to FISCH INT/ 14.3 DME and hold SE, left turn, 298° inbound, continue climb-in-hold to 6700).
<p>▼ Circling NA for Cats C, D, and E south of Rwys 4 and 25.</p>	

ATIS <b>118.275</b>	JOSHUA APP CON <b>124.55 363.0</b>	PALMDALE TOWER ★ <b>123.7</b> (CTAF) <b>0 317.6</b>	GND CON <b>121.9 317.6</b>
------------------------	---------------------------------------	--	-------------------------------

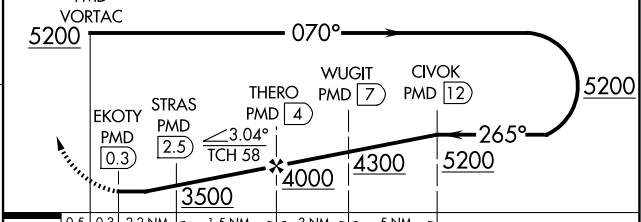


ELEV 2543	TDZE 2503
-----------	-----------



5000	7000	PMD	VGSI and descent angles not coincident (VGSI Angle 3.00/TCH 76).
PMD R-282			

Remain within 15 NM of PMD VORTAC



CATEGORY	A	B	C	D	E
S-25	2840-1 337 (300-1)				
CIRCLING	3020-1 477 (500-1)	3060-1 517 (600-1)	3140-1½ 597 (600-1½)	3740-3 1197 (1200-3)	3760-3 1217 (1300-3)

SW-3, 09 JUL 2026 to 06 AUG 2026

SW-3, 09 JUL 2026 to 06 AUG 2026