

ILS or LOC Y RWY 32

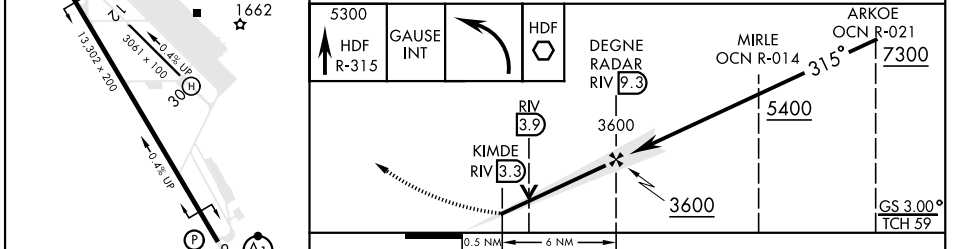
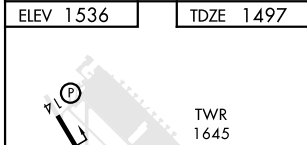
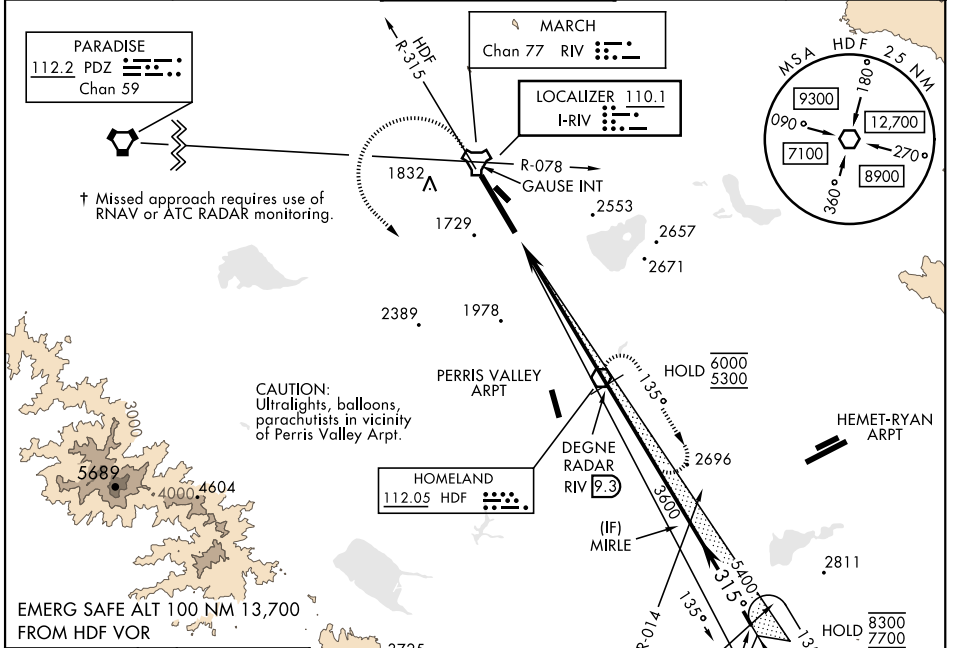
LOC I-RIV 110.1	APCH CRS 315°	Rwy Ldg 13,302 TDZE 1497 Arpt Elev 1536	AL-348 [USAF]	MARCH ARB (KRIV)
---------------------------	-------------------------	--	---------------	------------------

▼ *When ALS inop, increase RVR to 40 and vis to ¾ mile.
 **When ALS inop, increase CAT AB RVR to 55 and vis to 1 mile, CAT CDE RVR to 60 and vis to 1½ miles.
 ***Circling not authorized NE of Rwy 14-32. Rapid rising terrain.

ALSF-1

† MISSED APPROACH: Climb to 5300 on HDF VOR R-315 to GAUSE, turn left direct HDF continue climb in hold to 5300.

ATIS 134.75 239.05	APP/DEP CON ★ 133.5 306.975	TOWER 127.65 253.5	GND CON 121.75 335.8	CLNC DEL 127.775 268.7
------------------------------	---------------------------------------	------------------------------	--------------------------------	----------------------------------



CATEGORY	A	B	C	D	E
	S-ILS 32 *		200 (200-½)		
S-LOC 32 **	1900/24 403 (400-½)		1900/40 403 (400-¾)		
	2180-1 644 (700-1)	2260-1 724 (800-1)	2300-2¼ 764 (800-2¼)	2440-3 904 (1000-3)	2840-3 1304 (1400-3)
ⓐ CIRCLING ***					

ILS or LOC Y RWY 32

SW-3, 09 JUL 2026 to 06 AUG 2026

SW-3, 09 JUL 2026 to 06 AUG 2026