

RIVERSIDE, CALIFORNIA

# RNAV (GPS) RWY 14

WAAS CH <b>91363</b> W14A	APCH CRS <b>135°</b>	Rwy ldg TDZE Arprt Elev	<b>13,302</b> <b>1536</b> <b>1536</b>
---------------------------------	-------------------------	-------------------------------	---

AL-348 (USAF)

MARCH ARB (KRIV)

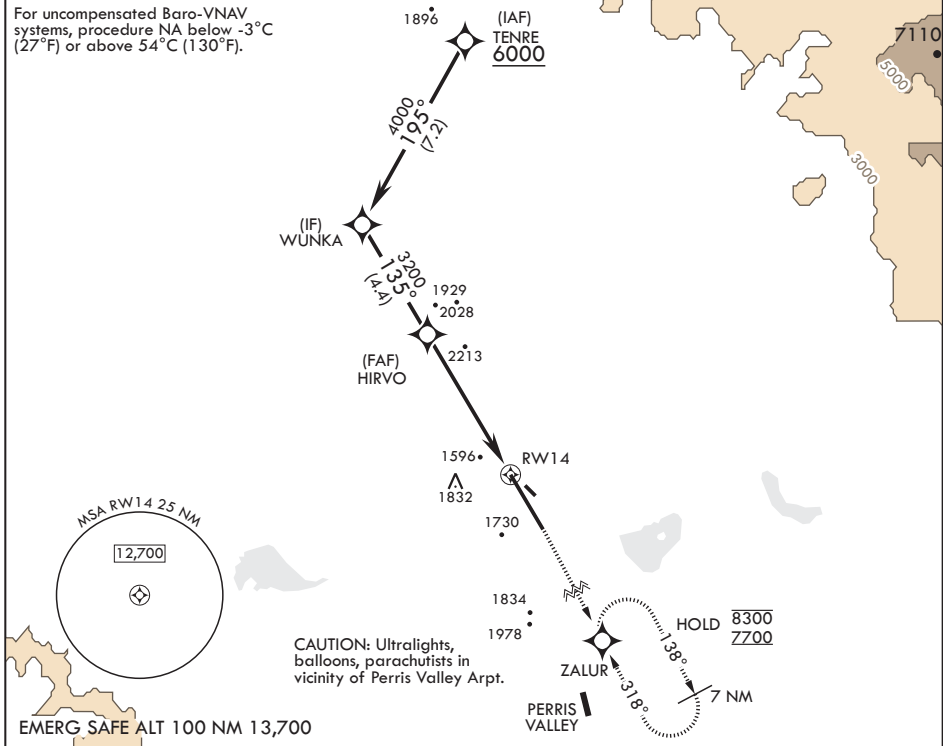
RNP APCH

MISSED APPROACH: Climb to 2300 then climbing right turn direct ZALUR and hold, continue climb in hold to 7700.

\* Circling NA NE of Rwy 14-32. Rapid rising terrain.

ATIS <b>134.75 239.05</b>	APP CON/DEP CON* <b>133.5 306.975</b>	TOWER <b>127.65 253.5</b>	GND CON <b>121.75 335.8</b>	CLNC DEL <b>127.775 268.7</b>
------------------------------	--	------------------------------	--------------------------------	----------------------------------

For uncompensated Baro-VNAV systems, procedure NA below -3°C (27°F) or above 54°C (130°F).



TENRE	2300	7700	ZALUR	ELEV 1536	TDZE 1536
6000	↑	↻	⊙	135°	
WUNKA				1565	BCN
4000				3061 x 100	TWR
HIRVO				13,302 x 200	H
2.8 NM to RWY 14				0.4% DOWN	32
GP 2.70°					32
TCH 56					
CATEGORY	A	B	C	D	
LPV DA	1756/40	220	(300-¾)		
LNAV/VNAV DA	2080-1⅝	544	(600-1⅝)		
LNAV MDA	2380/55 844 (900-1)	2380-1¼ 844 (900-1¼)	2380-2½ 844 (900-2½)	844 (900-2½)	
CIRCLING*	2380-1¼ 844 (900-1¼)	844 (900-1¼)	2380-2½ 844 (900-2½)	2440-3 904 (1000-3)	
				HIRL Rwy 14-32	

RIVERSIDE, CALIFORNIA

33°53'N - 117°16'W

MARCH ARB (KRIV)

Amdt 7 24MAR22  
TERPS

# RNAV (GPS) RWY 14

SW-3, 09 JUL 2026 to 06 AUG 2026

SW-3, 09 JUL 2026 to 06 AUG 2026