

SKYES-FOUR DEPARTURE (SKYES 4.SKYES)

[USAF]

MARCH ARB (KRIV)

RIVERSIDE, CALIFORNIA

ATIS 134.75 239.05
 CLNC DEL
 127.775 268.7
 GND CON
 121.75 335.8
 TOWER
 127.65 253.5
 DEP CON ★
 133.5 306.975
 LOS ANGELES
 CENTER
 132.5 284.7

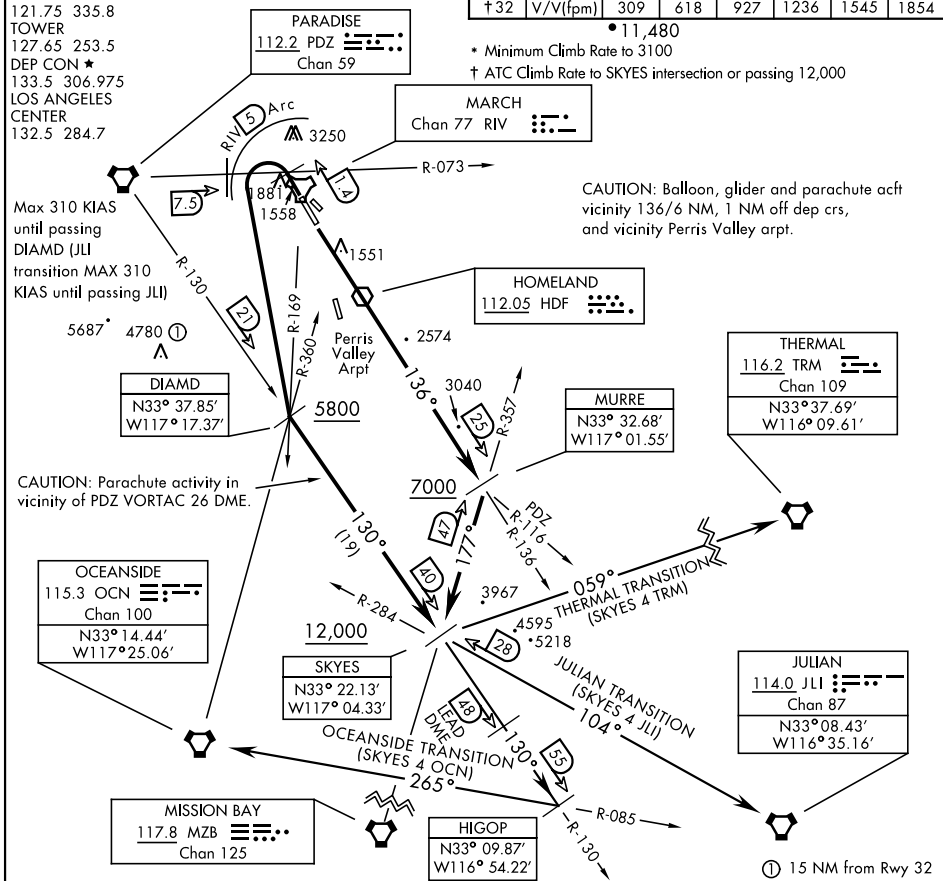
RADAR required TRM transition

| Rwy | Knots | 60 | 120 | 180 | 240 | 300 | 360 |
|------|----------|-----|-----|------|------|------|------|
| * 32 | V/V(fpm) | 231 | 462 | 693 | 924 | 1155 | 1386 |
| † 14 | V/V(fpm) | 334 | 668 | 1002 | 1336 | 1670 | 2004 |
| † 32 | V/V(fpm) | 309 | 618 | 927 | 1236 | 1545 | 1854 |

• 11,480

* Minimum Climb Rate to 3100

† ATC Climb Rate to SKYES intersection or passing 12,000



CAUTION: Parachute activity in vicinity of PDZ VORTAC 26 DME.

CAUTION: Balloon, glider and parachute acft vicinity 136/6 NM, 1 NM off dep crs, and vicinity Perris Valley arpt.

SW-3, 09 JUL 2026 to 06 AUG 2026

SW-3, 09 JUL 2026 to 06 AUG 2026

DEPARTURE ROUTE DESCRIPTION

TAKEOFF RWY 14: Climb via RIV TACAN R-136 or climb direct HDF VOR, then via HDF R-136 to MURRE, intercept MZB VORTAC R-357 to SKYES, cross MURRE at or above 7000, and SKYES at or above 12,000. Thence via transition or assigned route.

TAKEOFF RWY 32: Climb on track 315°, then turn left crossing PDZ VORTAC R-073/RIV TACAN 1.4 DME direct DIAMD, proceed no closer than 7.5 DME PDZ. Remain within 5 DME RIV. Cross DIAMD at or above 5800. Intercept PDZ R-130 to SKYES, cross SKYES at or above 12,000. Thence via transition or assigned route.

JULIAN TRANSITION (SKYES 4 JLI): From over SKYES via JLI VORTAC R-284 direct JLI. MAX 310 KIAS until passing JULIAN VORTAC.

OCEANSIDE TRANSITION (SKYES 4 OCN): From over SKYES via PDZ VORTAC R-130 direct HIGOP, intercept OCN VORTAC R-085 direct OCN.

THERMAL TRANSITION (SKYES 4 TRM): From over SKYES track 059° to TRM. (Radar required)

SKYES-FOUR DEPARTURE (SKYES 4.SKYES)

RIVERSIDE, CALIFORNIA

MARCH ARB (KRIV)