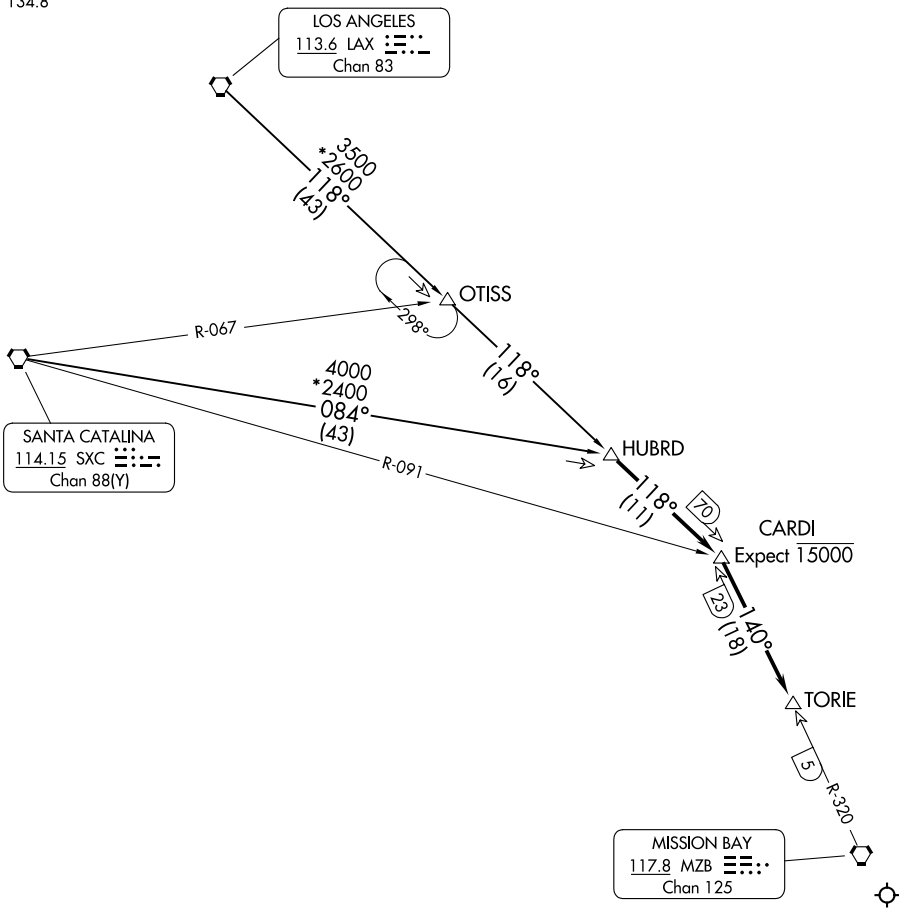


SOCAL APP CON  
 125.3 290.4  
 D-ATIS  
 134.8



SW-3, 09 JUL 2026 to 06 AUG 2026

SW-3, 09 JUL 2026 to 06 AUG 2026

NOTE: Chart not to scale.

**ARRIVAL ROUTE DESCRIPTION**

LOS ANGELES TRANSITION (LAX.HUBRD1): From over LAX VORTAC on LAX R-118 to OTISS INT, then on LAX R-118 to HUBRD INT. Thence . . . .

SANTA CATALINA TRANSITION (SXC.HUBRD1): From over SXC VORTAC on SXC R-084 to HUBRD INT. Thence . . . .

. . . . From over HUBRD INT via LAX R-118 to CARDI FIX via MZB R-320 to TORIE FIX. Expect vector to final approach course.