


LOC/DME I-SAN 111.55 Chan 52 (Y)	APP CRS 095°	Rwy Ldg 7280 TDZE 17 Apt Elev 17
---	------------------------	---

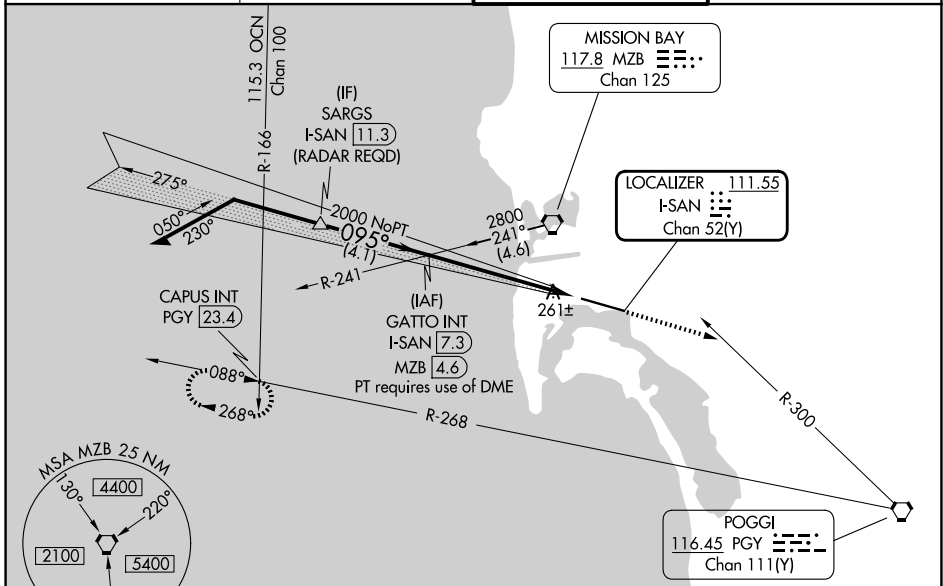
ILS Y or LOC Y RWY 9

SAN DIEGO INTL (SAN)

⚠ Circling NA north of Rwy 9-27. Autopilot coupled approach NA below 530. When Circling to Rwy 27 at night, operational VGSI required, remain on or above VGSI glidepath until threshold. For inop ALS, increase S-ILS 9 all Cats visibility to 2½ SM. Rwy 9 helicopter visibility reduction below RVR 4000 NA. #Inop table does not apply to S-ILS 9.

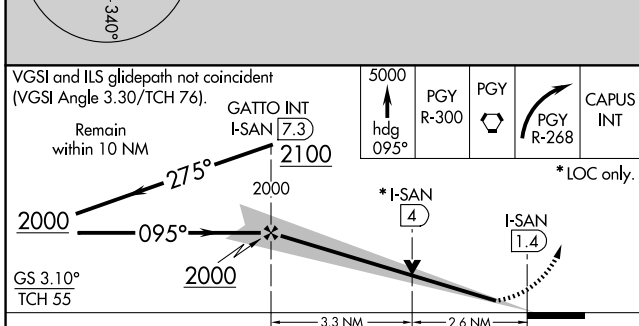
MALS

 MISSED APPROACH: Climb to 5000 on heading 095° and on PGY VORTAC R-300 to PGY VORTAC, then right turn on PGY VORTAC R-268 to CAPUS INT/23.4 DME and hold. #Missed approach requires minimum climb of 270 feet per NM to 4000.

D-ATIS 134.8	SOCAL APP CON 119.6 363.1 (W) 124.35 279.625 (E)	LINDBERGH TOWER 118.3 338.225	GND CON 123.9
------------------------	--	---	-------------------------



SW-3, 09 JUL 2026 to 06 AUG 2026

SW-3, 09 JUL 2026 to 06 AUG 2026



ELEV 17	D TDZE 17
---------	------------------

CATEGORY	A	B	C	D
S-ILS 9#	258/40		241 (300-¾)	
S-ILS 9	751-2		734 (800-2)	
S-LOC 9	960/40 943 (1000-¾)		960-2 943 (1000-2)	
CIRCLING	960-1¼ 943 (1000-1¼)		960-2¾ 943 (1000-2¾)	
			960-3 943 (1000-3)	

Diagram showing the final approach segment with a 095° heading, a 2000 ft MSL threshold, and a 9401 X 200 ft obstacle. A tower (TWR) is indicated. A note states 'TDRZ/RCLS Rwys 9 and 27 HIRL Rwy 9-27'.

FAF to MAP 5.9 NM					
Knots	60	90	120	150	180
Min:Sec	5:54	3:56	2:57	2:22	1:58