


LOC/DME I-SAN 111.55 Chan 52 (Y)	APP CRS 095°	Rwy Ldg 7280 TDZE 17 Apt Elev 17
---	------------------------	---

ILS Z or LOC Z RWY 9

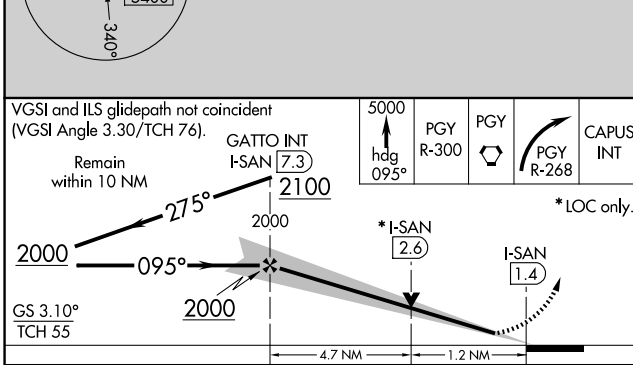
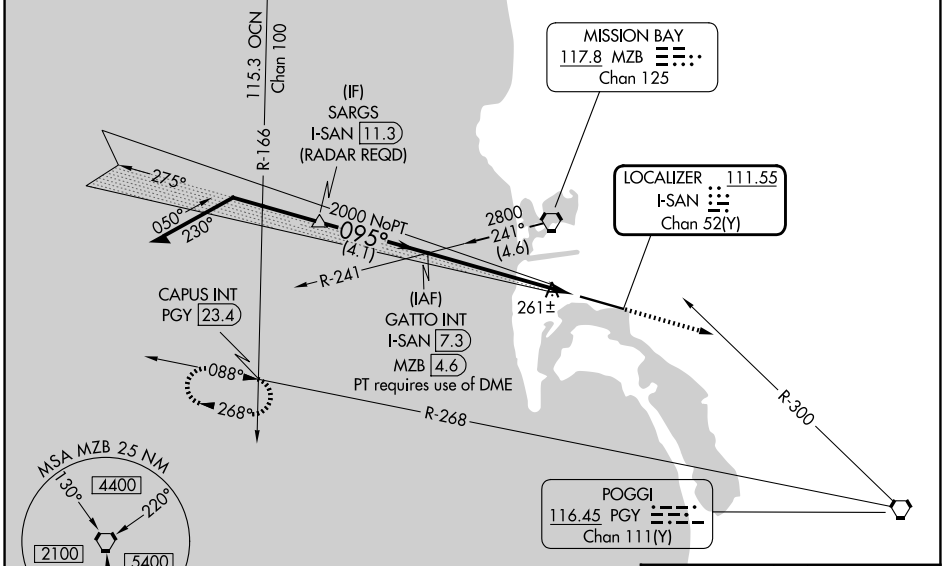
SAN DIEGO INTL (SAN)

⚠ Circling NA north of Rwy 9-27. Autopilot coupled approach NA below 530. When Circling to Rwy 27 at night, operational VGSI required, remain on or above VGSI glidepath until threshold. For inop ALS, increase S-LOC Cat A/B visibility to RVR 5500, and Cat C/D to 1 3/8 SM. LOC only: Rwy 9 helicopter visibility reduction below RVR 4000 NA.

MALSR


MISSED APPROACH: Climb to 5000 on heading 095° and on PGY VORTAC R-300 to PGY VORTAC, then right turn on PGY VORTAC R-268 to CAPUS INT/23.4 DME and hold.
#Missed approach requires minimum climb of 280 feet per NM to 3800; if unable to meet climb gradient, see ILS Y or LOC Y RWY 9.

D-ATIS 134.8	SOCAL APP CON 119.6 363.1 (W) 124.35 279.625 (E)	LINDBERGH TOWER 118.3 338.225	GND CON 123.9
------------------------	--	---	-------------------------



ELEV 17	D TDZE 17
<p>095°</p> <p>TWR</p> <p>9401 X 200</p> <p>AS</p>	
<p>TDZL/RCLS Rwy 9 and 27</p> <p>HIRL Rwy 9-27</p> <p>FAF to MAP 5.9 NM</p>	
CATEGORY	A B C D
S-ILS 9#	217/18 200 (200-1/2)
S-LOC 9	520/40 503 (600-3/4) 520/55 503 (600-1)
CIRCLING	800-1 820-1 820-2 1/4 940-3 783 (800-1) 803 (900-1) 803 (900-2 1/4) 923 (1000-3)
Knots	60 90 120 150 180
Min:Sec	5:54 3:56 2:57 2:22 1:58

SW-3, 09 JUL 2026 to 06 AUG 2026

SW-3, 09 JUL 2026 to 06 AUG 2026