

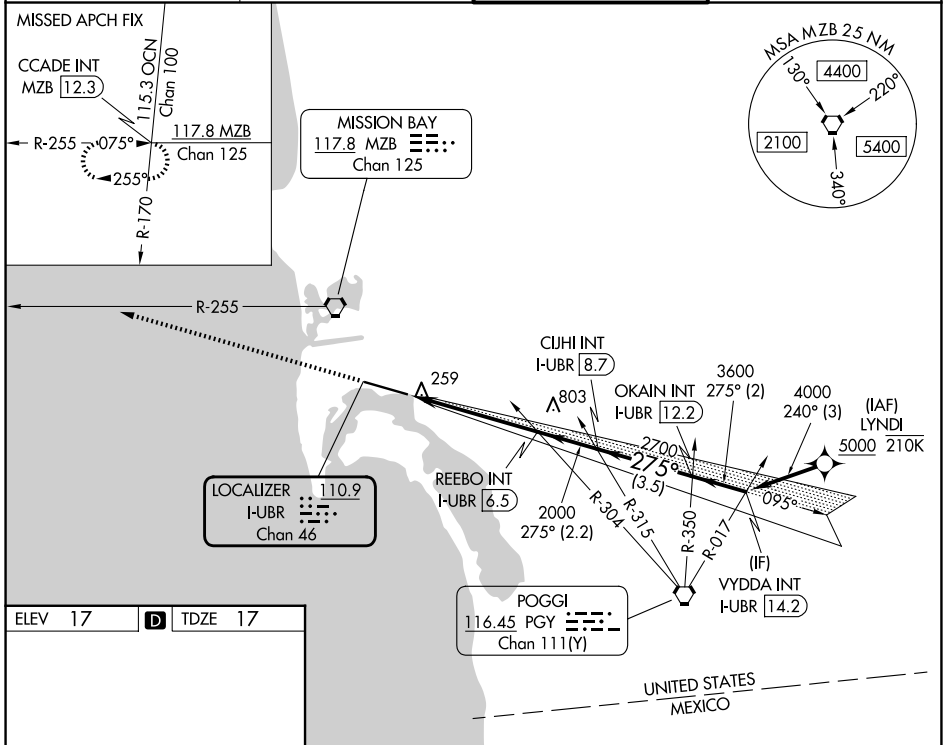
LOC/DME I-UBR 110.9 Chan 46	APP CRS 275°	Rwy Ldg TDZE Apt Elev 7591 17 17
---	------------------------	--

LOC RWY 27

SAN DIEGO INTL (SAN)

From LYNDI: RNAV 1-DME/DME/IRU or GPS required.	MALS ④	MISSED APPROACH: Climb to 2500 on heading 275° and on MZB VORTAC R-255 to CCADE INT/ MZB 12.3 DME and hold.
RNAV 1-DME/DME/IRU or GPS required for procedure entry.		
<p>▼ Rwy 27 helicopter visibility reduction below 1 SM NA. Circling NA north of Rwy 9-27. Inop table does not apply to Cats A and B. For inop ALS, increase S-27 Cats C and D visibility to 1/8 SM.</p>		

D-ATIS 134.8	SOCAL APP CON 119.6 363.1 (W) 124.35 279.625 (E)	LINDBERGH TOWER 118.3 338,225	GND CON 123.9
------------------------	--	---	-------------------------



ELEV 17	D	TDZE 17		
<p>↑ hdg 275°</p> <p>2500</p> <p>MZB R-255</p> <p>CCADE INT</p> <p>VYDDA INT I-UBR 14.2</p> <p>OKAIN INT I-UBR 12.2</p> <p>CUJHI INT I-UBR 8.7</p> <p>REEBO INT I-UBR 6.5</p> <p>I-UBR 1.3</p> <p>2700</p> <p>3600</p> <p>4000</p> <p>275°</p> <p>5.2 NM</p> <p>2.2 NM</p> <p>3.5 NM</p> <p>2 NM</p>				
TDZL/RCLS Rwy 9 and 27 HIRL Rwy 9-27	<p>TWR</p> <p>9401 X 200</p> <p>275°</p>			
FAF to MAP 5.2 NM	<p>5.2 NM</p> <p>2.2 NM</p> <p>3.5 NM</p> <p>2 NM</p>			
Knots	60	90 120 150 180		
Min:Sec	5:12	3:28 2:36 2:05 1:44		
CATEGORY	A	B	C	D
S-27	680-1	663 (700-1)	680-1¾	663 (700-1¾)
CIRCLING	820-1	803 (900-1)	840-2½	940-3
			823 (900-2½)	923 (1000-3)

SW-3, 09 JUL 2026 to 06 AUG 2026

SW-3, 09 JUL 2026 to 06 AUG 2026