

PLYA TWO ARRIVAL (RNAV)

AL-373 (FAA)

SAN DIEGO INTL (SAN)
SAN DIEGO, CALIFORNIA

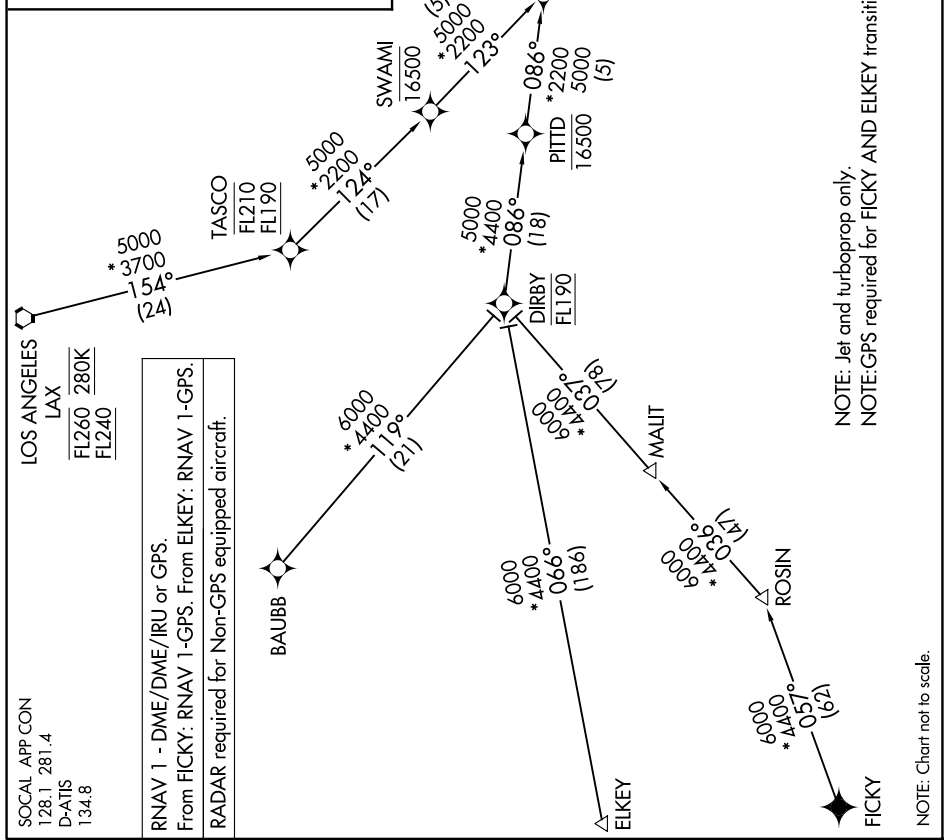
SW-3, 09 JUL 2026 to 06 AUG 2026 13:48-M

ARRIVAL ROUTE DESCRIPTION

BAUBB TRANSITION (BAUBB.PLYA2)
ELKEY TRANSITION (ELKEY.PLYA2)
FICKY TRANSITION (FICKY.PLYA2)
LOS ANGELES TRANSITION (LAX.PLYA2)

From PLYA on track 126° to cross MNLTY at or above 4000.

LANDING RUNWAY 9: From MNLTY on track 120° to cross SARGs at or above 2100. Expect ILS or LOC RWY 9 approach.



PLYA TWO ARRIVAL (RNAV)

(PLYA.PLYA2) 31OCT24

SAN DIEGO, CALIFORNIA
SAN DIEGO INTL (SAN)

LOS ANGELES LAX
 FL260 280K
 FL240

RNAV 1 - DME/DME/IRU or GPS.
 From FICKY: RNAV 1-GPS. From ELKEY: RNAV 1-GPS.
 RADAR required for Non-GPS equipped aircraft.

NOTE: Jet and turboprop only.
 NOTE:GPS required for FICKY AND ELKEY transitions.

NOTE: Chart not to scale.

SW-3, 09 JUL 2026 to 06 AUG 2026