

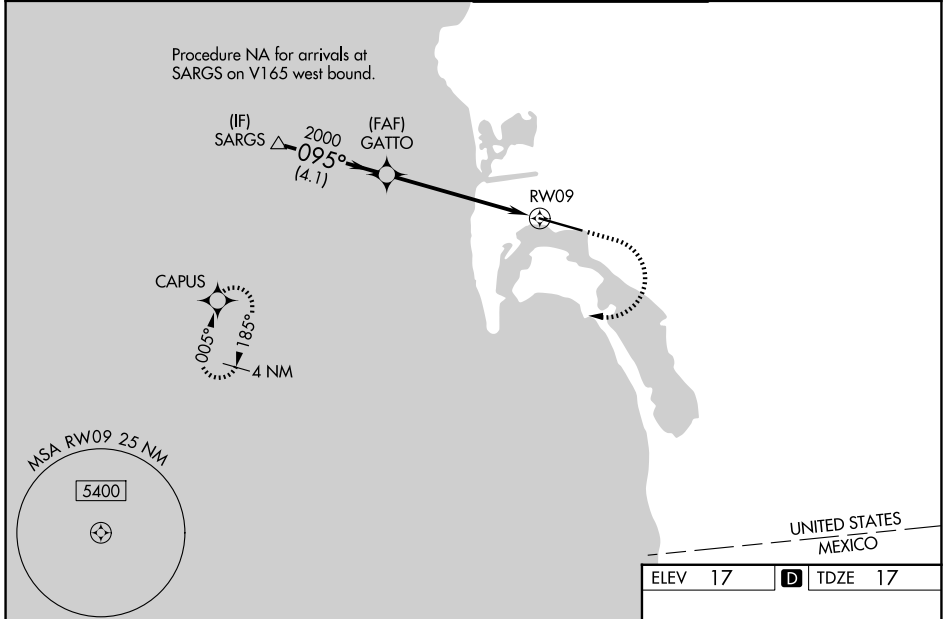
| | | |
|--|------------------------|---|
| WAAS CH 49237 W09A | APP CRS 095° | Rwy Ldg 7280 TDZE 17 Apt Elev 17 |
|--|------------------------|---|

RNAV (GPS) RWY 9

SAN DIEGO INTL (SAN)

| | | | |
|-----------|---|-----------|--|
| RNP APCH. | <p>⚠ Circling NA north of Rwy 9-27. For uncompensated Baro-VNAV systems, LNAV/VNAV NA below 6°C or above 47°C. When Circling to Rwy 27 at night, operational VGSI required, remain on or above VGSI glidepath until threshold. Rwy 9 helicopter visibility reduction below RVR 4000 NA. Inop table does not apply to LPV all Cats. For inop ALS, increase LNAV Cats A/B visibility to RVR 5500.</p> | MALSR | MISSED APPROACH: Climb to 2000 then climbing right turn to 3000 direct CAPUS and hold. |
| | | | |

| | | | |
|------------------------|--|---|-------------------------|
| D-ATIS 134.8 | SOCAL APP CON 119.6 363.1 (W) 124.35 279.625 (E) | LINDBERGH TOWER 118.3 338.225 | GND CON 123.9 |
|------------------------|--|---|-------------------------|



| | | | | |
|---|----------------------|----------------------|------------------------|-----------------------|
| ELEV 17 | D TDZE 17 | | | |
| <p>VGSI and RNAV glidepath not coincident (VGSI Angle 3.30/TCH 76).</p> <p>SARGS \triangle 2100 \rightarrow 095° \rightarrow GATTO \star 2000 \rightarrow RWY9 \odot</p> <p>GP 3.10° TCH 55</p> <p>Distances: 4.1 NM, 4.3 NM, 1.6 NM</p> <p>Waypoints: CAPUS \star, TWR \square 9401 X 200</p> <p>*1.6 NM to RWY9 *LNAV only.</p> | | | | |
| CATEGORY | A | B | C | D |
| LPV DA | | 262/40 | 245 (300-¾) | |
| LNAV/VNAV DA | | 621-1½ | 604 (700-1½) | |
| LNAV MDA | 600/40 | 583 (600-¾) | 600-1¼ | 583 (600-1¼) |
| CIRCLING | 800-1 783 (800-1) | 820-1 803 (900-1) | 820-2¼ 803 (900-2¼) | 940-3 923 (1000-3) |
| TDZL/RCLS Rwy 9 and 27 HIRL Rwy 9-27 | | | | |

SW-3, 09 JUL 2026 to 06 AUG 2026

SW-3, 09 JUL 2026 to 06 AUG 2026