

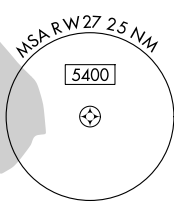
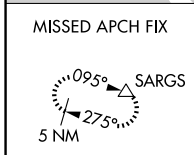
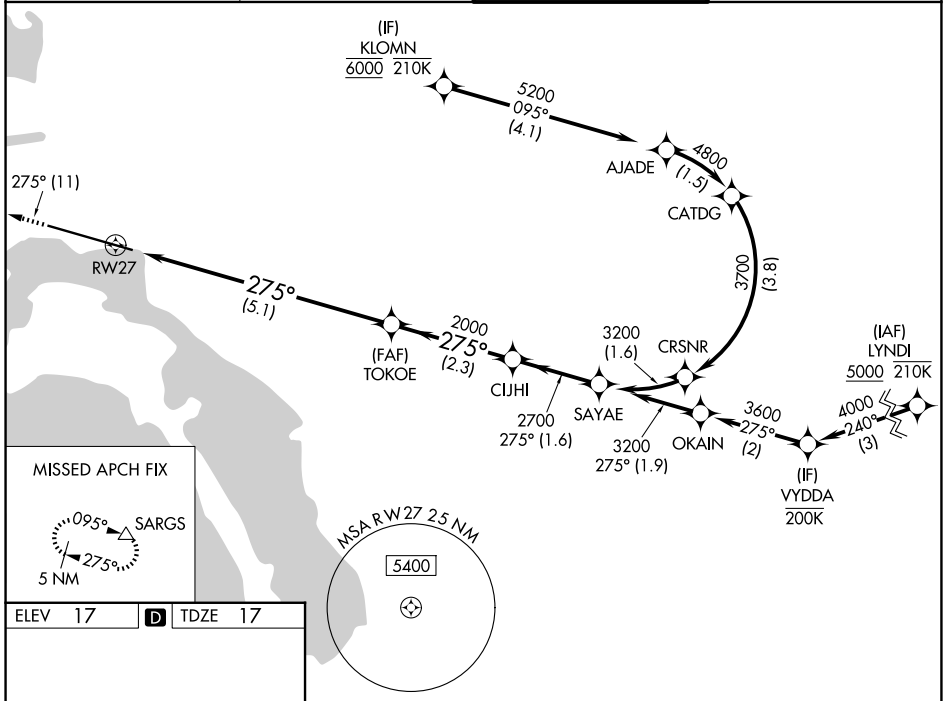
APP CRS 275°	Rwy Ldg TDZE Apt Elev	7591 17 17
------------------------	-----------------------------	---------------------------------------

RNAV (RNP) Z RWY 27

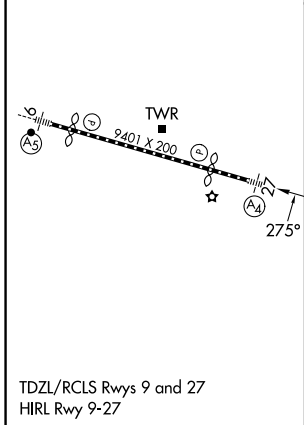
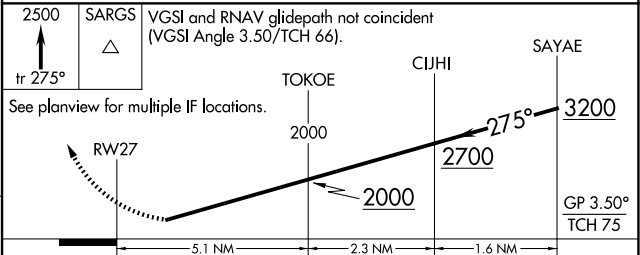
SAN DIEGO INTL (SAN)

RNP AR APCH - GPS. Authorization required. From KLOMN: RF.	MALS 	MISSED APPROACH: Climb to 2500 on track 275° to SARGs and hold.
For uncompensated Baro-VNAV systems, procedure NA below 5°C or above 44°C. For inop ALS, increase RNP 0.30 all Cats visibility to 2 1/2 SM. Straight-in Rwy 27 at night, operational VGSI required, remain on or above VGSI glidepath until threshold.		

D-ATIS 134.8	SOCAL APP CON 119.6 363.1 (W) 124.35 279.625 (E)	LINDBERGH TOWER 118.3 338.225	GND CON 123.9
------------------------	--	---	-------------------------



ELEV 17	D	TDZE 17
---------	----------	---------



CATEGORY	A	B	C	D
RNP 0.11 DA		624-1 1/2	607 (700-1 1/2)	
RNP 0.30 DA		789-2	772 (800-2)	

AUTHORIZATION REQUIRED

SW-3, 09 JUL 2026 to 06 AUG 2026

SW-3, 09 JUL 2026 to 06 AUG 2026