

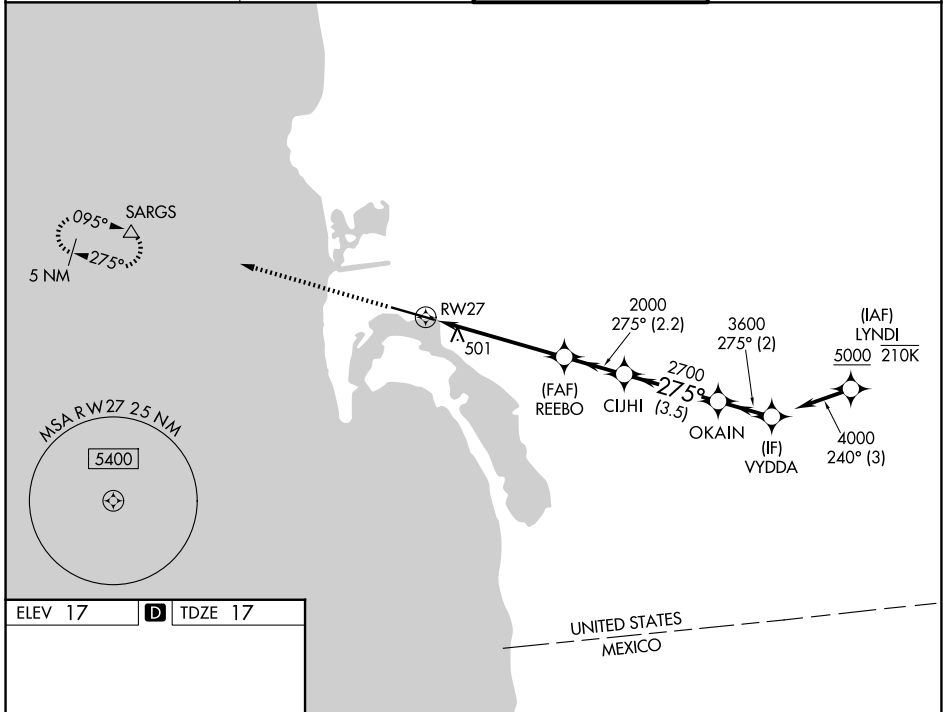
WAAS CH 82527 W27A	APP CRS 275°	Rwy Ldg TDZE Apt Elev	7591 17 17
--	------------------------	-----------------------------	---------------------------------------

RNAV (GPS) Y RWY 27

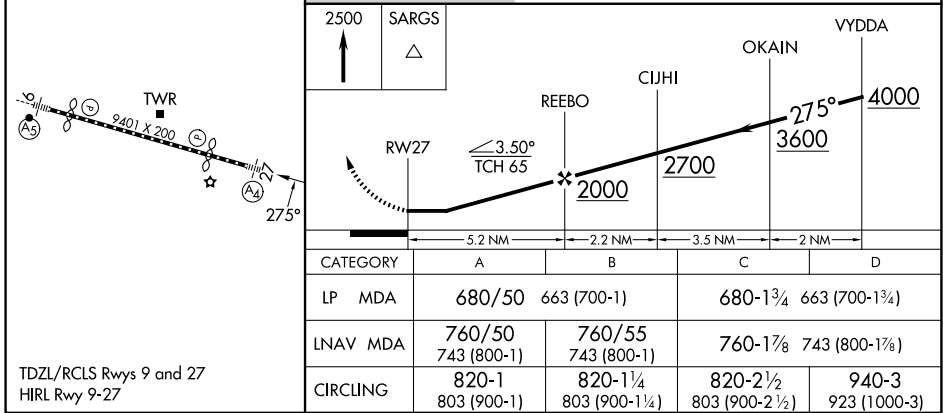
SAN DIEGO INTL (SAN)

RNP APCH.	MALS 	MISSED APPROACH: Climb to 2500 direct SARGS and hold.
 Rwy 27 helicopter visibility reduction below RVR 5000 NA. Straight-in Rwy 27 at night, operational VGSI required, remain on or above VGSI glidepath until threshold. Circling NA north of Rwy 9-27. For inop ALS, increase LNAV Cats C/D visibility to 2 SM. Inop table does not apply to LP Cats A/B and LNAV Cat A.		

D-ATIS 134.8	SOCAL APP CON 119.6 363.1 (W) 124.35 279.625 (E)	LINDBERGH TOWER 118.3 338.225	GND CON 123.9
------------------------	--	---	-------------------------



ELEV 17	D	TDZE 17
---------	----------	---------



SAN DIEGO, CALIFORNIA
Amdt 4A 15AUG19

32°44'N-117°11'W

SAN DIEGO INTL (SAN) RNAV (GPS) Y RWY 27

SW-3, 09 JUL 2026 to 06 AUG 2026

SW-3, 09 JUL 2026 to 06 AUG 2026