

# LOC/DME-A

NORTH ISLAND NAS (HALSEY FIELD) (KNZY)

LOC/DME I-UBR <b>110.9</b> Chan <b>46</b>	APCH CRS <b>275°</b>	Rwy Ildg THRE Arprt Elev <b>N/A</b> <b>N/A</b> <b>26</b>
---	-------------------------	---

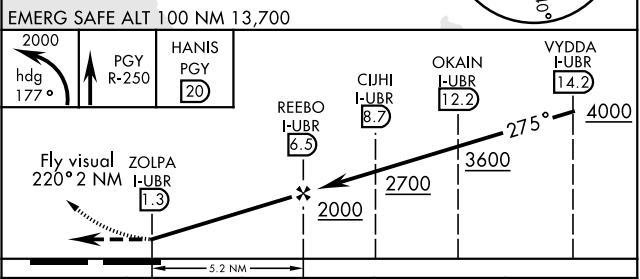
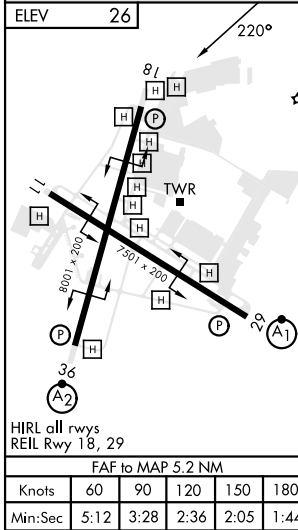
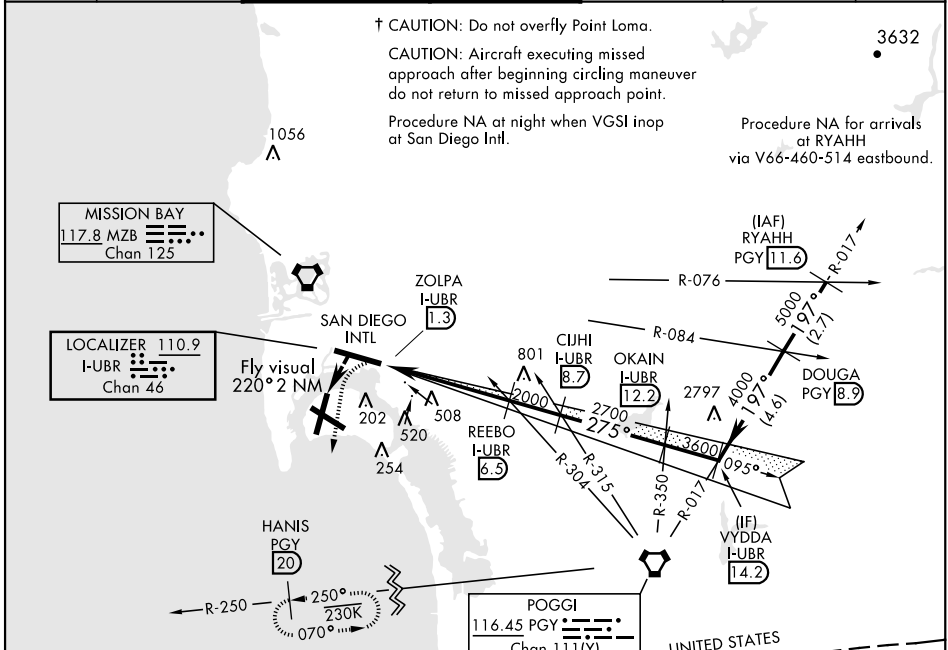
[USN]

▼ \* CAUTION: Maneuvering for circling approach not authorized  
W of Rwy 18-36 centerline. Approach authorized for Rwy 18 or  
left downwind approach to Rwy 29 after flying down Rwy 18.

† MISSED APPROACH: Climb and maintain 2000 via hdg  
177°, intercept PGY VORTAC R-250 to HANIS and hold.

ATIS ★ <b>317.8</b>	SOCAL APP CON <b>125.15 317.55</b>	NORTH ISLAND TOWER★ <b>135.1 336.4</b>	LINDBERGH TOWER <b>118.3 338.225</b>	GND CON <b>118.0 360.675</b>	CLNC DEL <b>128.4 288.25</b>	PAR/ASR
------------------------	---------------------------------------	---	---	---------------------------------	---------------------------------	---------

† CAUTION: Do not overfly Point Loma.  
CAUTION: Aircraft executing missed approach after beginning circling maneuver do not return to missed approach point.  
Procedure NA at night when VGSI inop at San Diego Intl.  
Procedure NA for arrivals at RYAHH via V66-460-514 eastbound.



EMERG SAFE ALT 100 NM 13,700	PGY R-250	HANIS PGY 20	REEBO I-UBR 6.5	CUJHI I-UBR 8.7	OKAIN I-UBR 12.2	VYDDA I-UBR 14.2
Fly visual 220° 2 NM	ZOLPA I-UBR 1.3	2000	2700	3600	275°	4000
CATEGORY		A	B	C	D	
CIRCLING *	860-2½	834 (900-2½)	880-2½	854 (900-2½)	880-2¾ (900-2¾)	

# LOC/DME-A

SW-3, 09 JUL 2026 to 06 AUG 2026

SW-3, 09 JUL 2026 to 06 AUG 2026