

SAN DIEGO, CALIFORNIA

RNAV (RNP) Z RWY 36

APCH CRS	Rwy Idg	8001
004°	TDZE	19
	Arprt Elev	26

(USN)

NORTH ISLAND NAS (HALSEY FLD) (KNZY)

RNP AR APCH-GPS, RF.

MISSED APPROACH: Climb to 700, then climbing right turn to 2000 direct SKATE and hold.

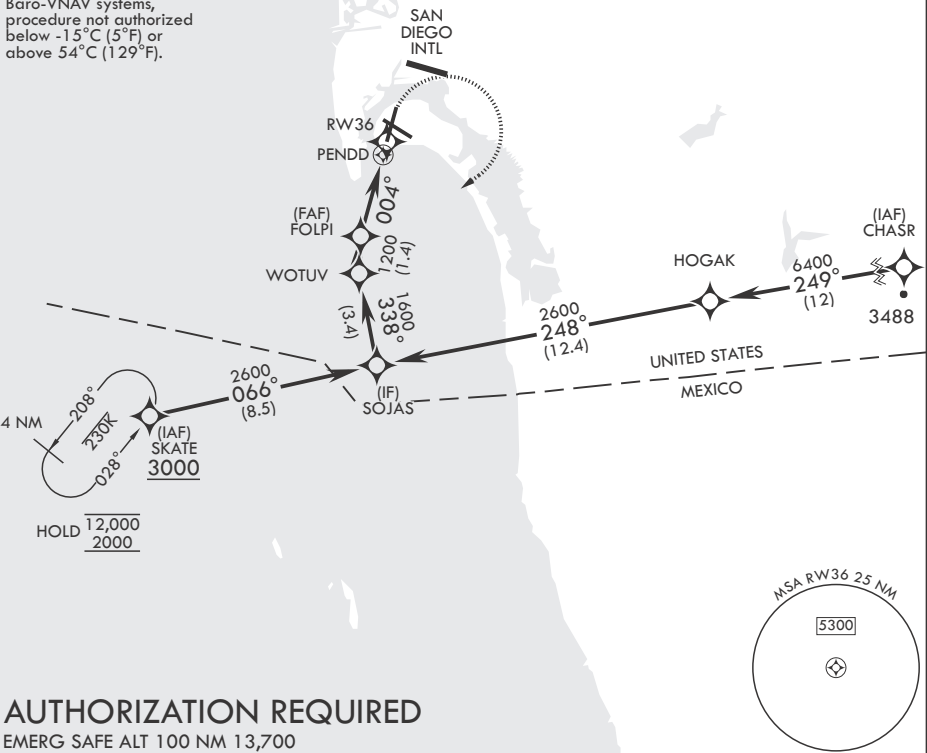
▼ * When ALS inop, increase vis to 7/8 mile.



ATIS★	SOCAL APP CON/DEP CON	TOWER★	GND CON	CLNC DEL	ASR/PAR
317.8	125.15 317.55	135.1 336.4	118.0 360.675	128.4 288.25	

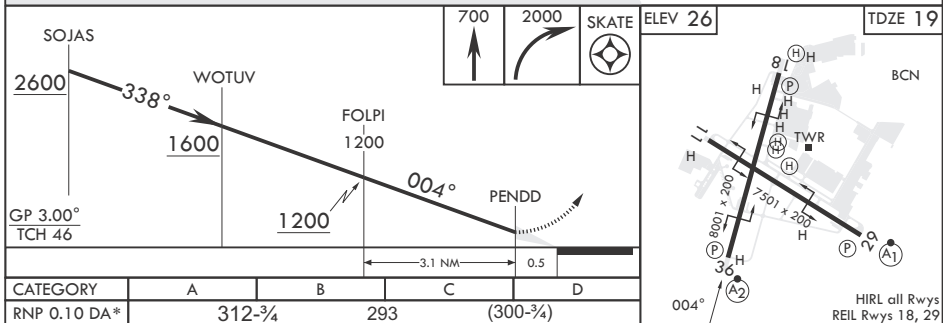
When local altimeter setting not received, use San Diego (SAN) Intl. altimeter setting.

For uncompensated Baro-VNAV systems, procedure not authorized below -15°C (5°F) or above 54°C (129°F).



AUTHORIZATION REQUIRED

EMERG SAFE ALT 100 NM 13,700



SAN DIEGO, CALIFORNIA

32°42'N - 117°13'W

NORTH ISLAND NAS (HALSEY FLD) (KNZY)

Orig 28NOV24

RNAV (RNP) Z RWY 36

SW-3, 09 JUL 2026 to 06 AUG 2026

SW-3, 09 JUL 2026 to 06 AUG 2026