

GAUCH THREE DEPARTURE (RNAV)

AL-378 (FAA)

9202 GUN 01 2026 10R 60 3:MS

DEPARTURE ROUTE DESCRIPTION

TAKEOFF RUNWAY 7: Climb on heading 075° to intercept course 130° to RROJO, then on track 198° to KELLP, then on track 245 to CORRK, then on track 254° to KNNZI, then on track 331° to cross GAUCH at or above 6000, thence

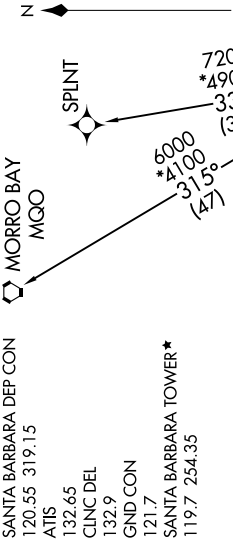
TAKEOFF RUNWAYS 15L/R: Climb on heading 152° to intercept course 202° to CORRK, then on track 254° to KNNZI, then on track 331° to cross GAUCH at or above 6000, thence

TAKEOFF RUNWAY 25: Climb direct GRPES, then on track 255° to GRRRR, then on track 320° to cross GAUCH at or above 6000, thence
...on (transition). Maintain ATC assigned altitude. Expect final altitude 10 minutes after departure.

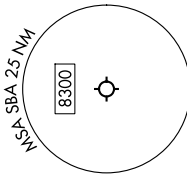
MORRO BAY TRANSITION (GAUCH3.MGO)
SPLINT TRANSITION (GAUCH3.SPLINT)

RNAV 1 - DME/DME/IRU or GPS.

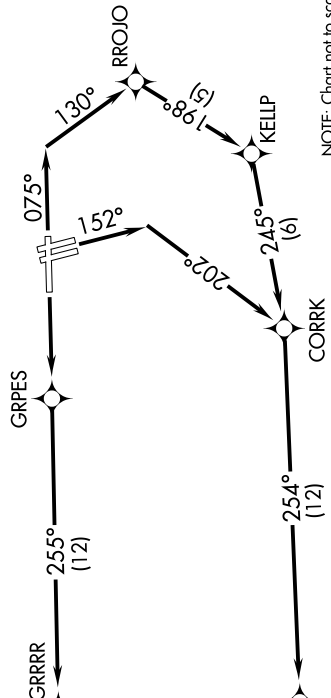
RADAR required for non-GPS equipped aircraft.



**TOP ALTITUDE:
ASSIGNED BY ATC**



TAKEOFF MINIMUMS
Rwys 33L/R: NA - Environmental.
Rwys 7, 15L: Standard with minimum climb of 500'/NM to 520.
Rwy 15R: 300-1 with minimum climb of 500'/NM to 520.
Rwy 25: Standard with minimum climb of 220'/NM to 3900.



NOTE: Chart not to scale.

SW-3, 09 JUL 2026 to 06 AUG 2026