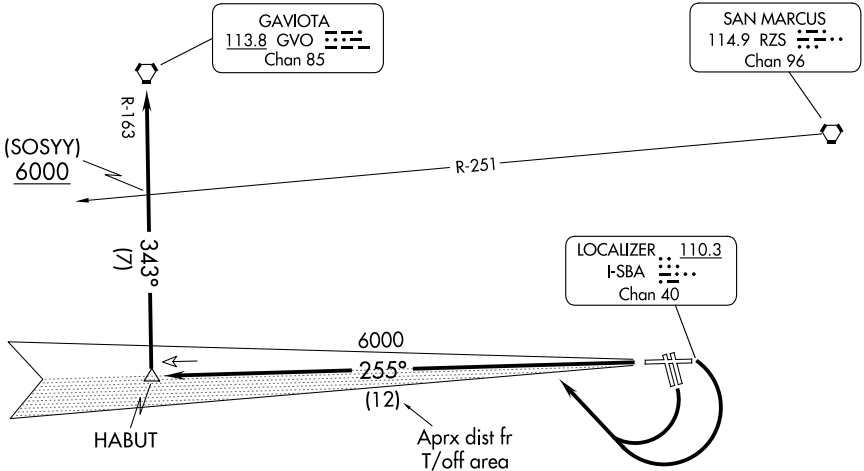


ATIS
 132.65
 CLNC DEL
 132.9
 GND CON
 121.7
 SANTA BARBARA TOWER *
 119.7 (CTAF) 254.35
 SANTA BARBARA DEP CON
 120.55 319.15



SW-3, 09 JUL 2026 to 06 AUG 2026

SW-3, 09 JUL 2026 to 06 AUG 2026

NOTE: IFR departure Rwy 33L/R not authorized.

NOTE: Minimum (ATC) climb of 385' per NM to 6000'.

NOTE: Chart not to scale.



DEPARTURE ROUTE DESCRIPTION

TAKEOFF RUNWAYS 7 and 15L/R: Turn right, intercept I-SBA west course to HABUT INT, thence via GVO R-163 to GVO VORTAC. Cross RZS R-251 at or above 6000'.

TAKEOFF RUNWAY 25: Intercept I-SBA west course to HABUT INT, thence via GVO R-163 to GVO VORTAC. Cross RZS R-251 at or above 6000'.