

PITBL TWO ARRIVAL (RNAV)

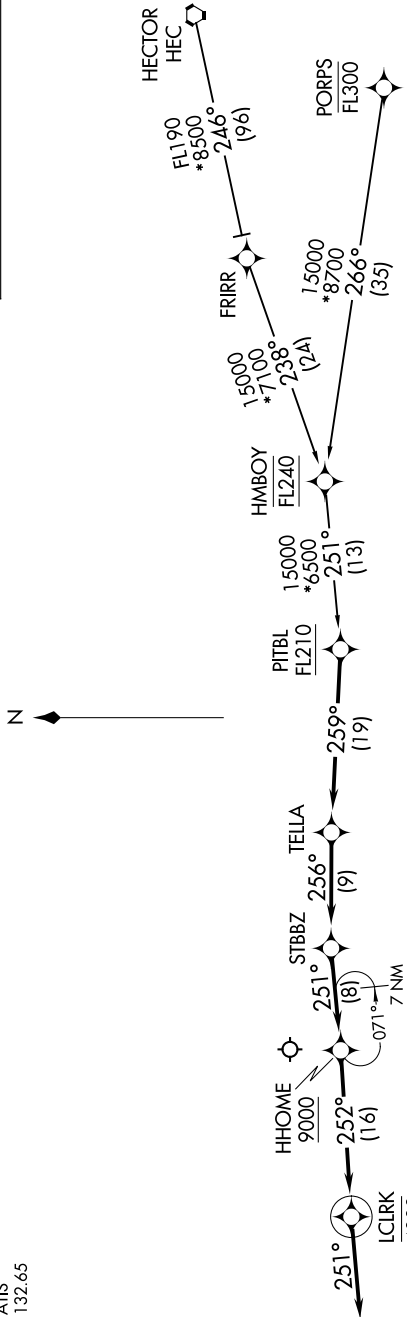
AL-378 (FAA)

SANTA BARBARA MUNI (SBA)
SANTA BARBARA, CALIFORNIA

SW-3, 09 JUL 2026 to 06 AUG 2026 10:00-18:00

SANTA BARBARA APP CON
120.55 319.15
ATIS
132.65

RNAV 1 - DME/DME/IRU or GPS.
RADAR required.



NOTE: Jet and turboprop aircraft only.

NOTE: Chart not to scale.

ARRIVAL ROUTE DESCRIPTION

HECTOR TRANSITION (HEC.PITBL2)

PORPS TRANSITION (PORPS.PITBL2)

From PITBL on track 259° to TELLA.

LANDING RUNWAYS 7, 25: From TELLA on track 256° to STBBZ, then on track 251° to cross HHOME at or above 9000, then on track 252° to cross ICLRK at 4000, then on track 251°. Expect RADAR vectors to final approach course.

PITBL TWO ARRIVAL (RNAV)

(PITBL.PITBL2) 07AUG25

SANTA BARBARA, CALIFORNIA
SANTA BARBARA MUNI (SBA)

SW-3, 09 JUL 2026 to 06 AUG 2026