

WAAS CH <b>78306</b> <b>W07A</b>	APP CRS <b>074°</b>	Rwy Ldg TDZE Apt Elev	<b>6052</b> <b>13</b> <b>14</b>
--	------------------------	-----------------------------	---------------------------------------

# RNAV (GPS) RWY 7

SANTA BARBARA MUNI (SBA)

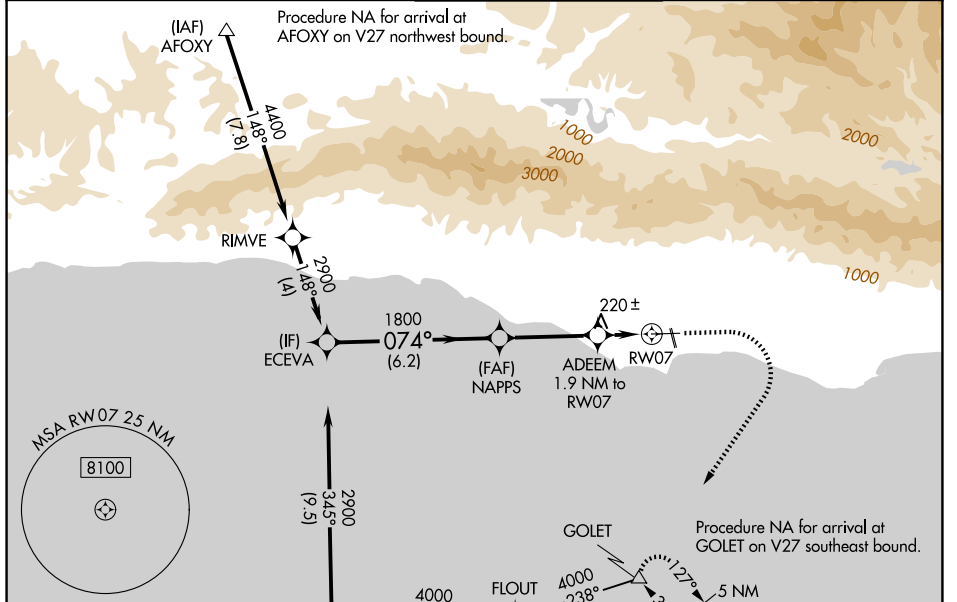
RNP APCH - GPS.

For uncompensated Baro-VNAV systems, LNAV/VNAV NA below 2°C or above 54°C. Circling Rwy 15L/R and 33L/R NA at night. Circling NA for Cats C and D north of Rwy 7-25. For Inop ALS, increase LNAV/VNAV all Cats visibility to 1 3/8 SM and LNAV Cats C and D increase visibility to 1 3/8 SM.

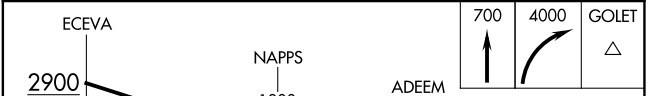
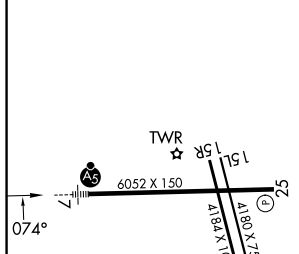
MALSR

MISSED APPROACH: Climb to 700 then climbing right turn to 4000 direct GOLET and hold, continue climb-in-hold to 4000.

ATIS <b>132.65</b>	SANTA BARBARA APP CON * <b>120.55 319.15</b> (151°-329°) <b>125.4 291.1</b> (330°-150°)	SANTA BARBARA TOWER * <b>119.7</b> (CTAF) <b>0 254.35</b>	GND CON <b>121.7</b>	UNICOM <b>122.95</b>
-----------------------	---	--	-------------------------	-------------------------



ELEV 14	<b>D</b>	TDZE 13
---------	----------	---------



GP 3.00°	TCH 52	6.2 NM	3.5 NM	0.6	1.3 NM
----------	--------	--------	--------	-----	--------

CATEGORY	A	B	C	D
LPV DA	263/24		250 (300-1/2)	
LNAV/VNAV DA	480/50		467 (500-1)	
LNAV MDA	480/24	467 (500-1/2)	480/50	467 (500-1)
CIRCLING	700-1 686 (700-1)	760-1 746 (800-1)	760-2 1/4 746 (800-2 1/4)	900-3 886 (900-3)

HIRL Rwy 7-25   
 MIRL Rwy 15R-33L   
 REIL Rwy 15R and 25

SW-3, 09 JUL 2026 to 06 AUG 2026

SW-3, 09 JUL 2026 to 06 AUG 2026