

# RNAV (GPS) RWY 26

WAAS CH <b>95990</b> <b>W26A</b>	APCH CRS <b>259°</b>	Rwy Idg TDZE Arprt Elev <b>9503</b> <b>-46</b> <b>-42</b>
--	-------------------------	--

[USN]

EL CENTRO NAF (VRACIU FLD) (KNJK)

RNP APCH  
 ⚠ Circling to Rwy 30 not authorized at night.  
 When tower closed, increase visibility to 1 mile.

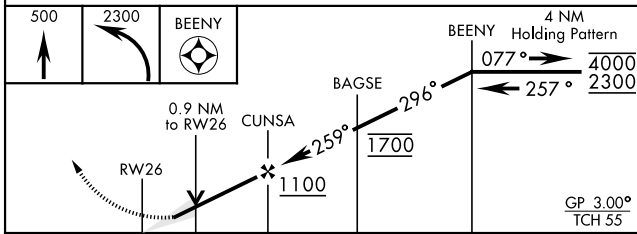
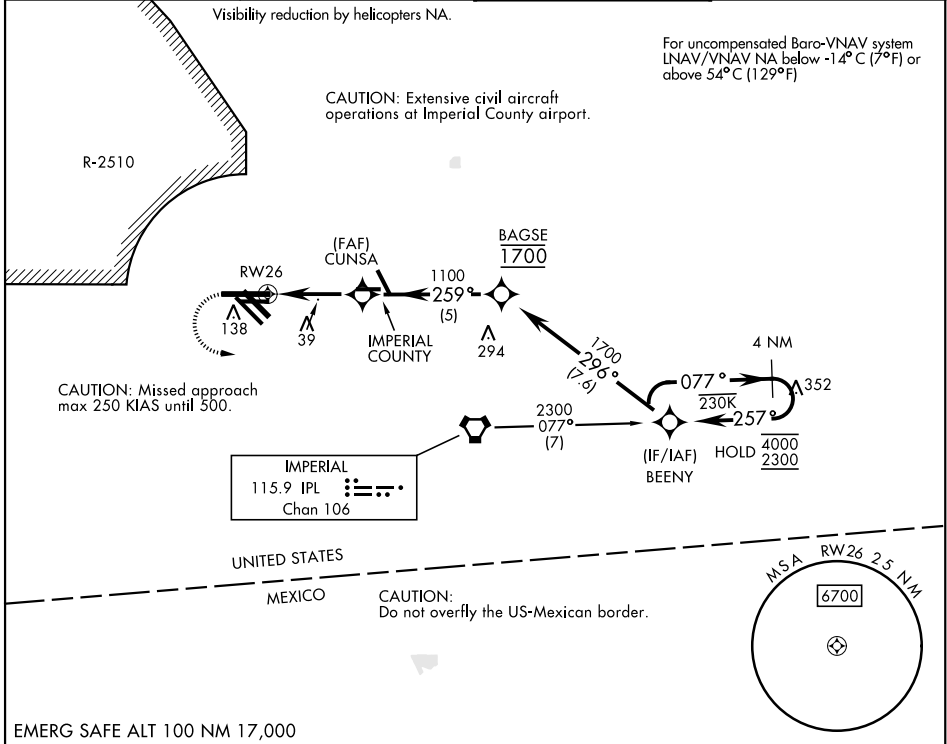
MISSED APPROACH: Climb to 500, then climbing left turn to 2300 direct BEENY and hold.

ATIS ★  
**269.275**

APP CON  
**132.275 292.2**

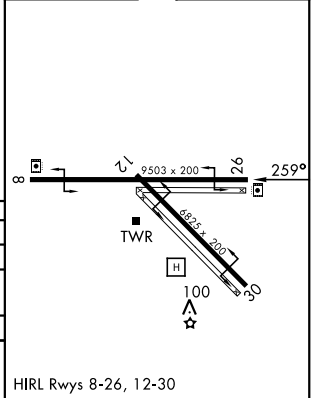
TOWER ★  
**119.1 360.2**

GND CON  
**121.9 254.35**



ELEV -42	TDZE -46
----------	----------

CATEGORY	A	B	C	D
LPV DA	206-¾	252	(300-¾)	
LNAV/VNAV DA	204-¾	250	(300-¾)	214-¾ 260 (300-¾)
LNAV MDA	300-1	346	(400-1)	
CIRCLING	480-1 522 (600-1)	480-1½ 522 (600-1½)	520-2 562 (600-2)	



# RNAV (GPS) RWY 26

SW-3, 09 JUL 2026 to 06 AUG 2026

SW-3, 09 JUL 2026 to 06 AUG 2026