

EL CENTRO, CALIFORNIA

RNAV (GPS) RWY 8

WAAS CH 89932 W08A	APCH CRS 079°	Rwy ldg TDZE Arpt Elev	9503 -46 -42
---------------------------------	-------------------------	------------------------------	---

(USN)

EL CENTRO NAF (VRACIU FLD) (KNJK)

RNP APCH

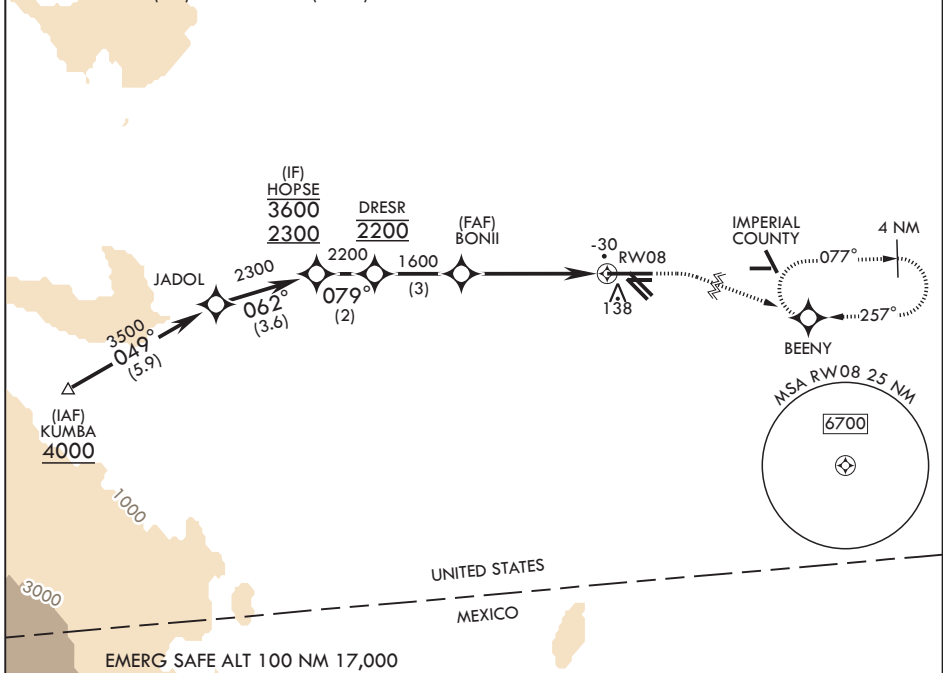
⚠ Circling visibility reduction by helicopters NA.
When tower closed, increase visibility to 1 mile.

MISSED APPROACH: Climb to 800, then climbing right turn to 2400 direct BEENY and hold.

ATIS* 269.275	APP CON/DEP CON 132.275 292.2	TOWER* 119.1 360.2	GND CON 121.9 254.35
-------------------------	---	------------------------------	--------------------------------

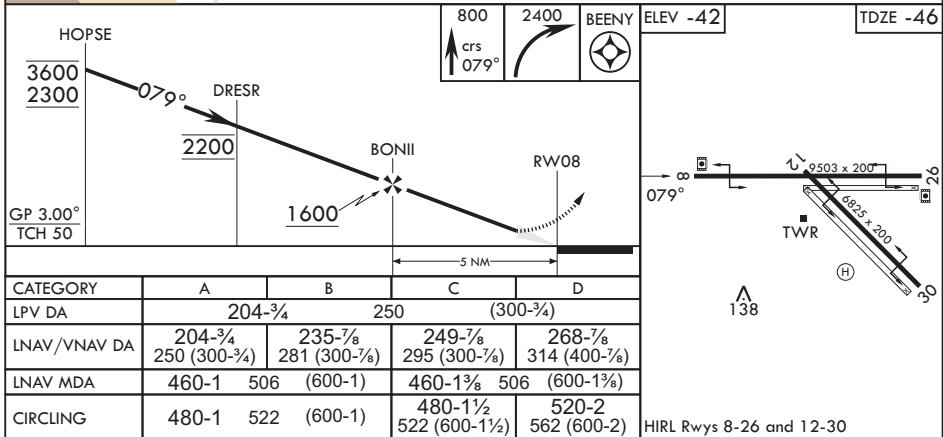
Circling to Rwy 30 NA at night.

For uncompensated Baro-VNAV systems, LNAV/VNAV NA below -14°C (7°F) or above 54°C (129°F).



SW-3, 09 JUL 2026 to 06 AUG 2026

SW-3, 09 JUL 2026 to 06 AUG 2026



EL CENTRO, CALIFORNIA

32°50'N - 115°40'W

EL CENTRO NAF (VRACIU FLD) (KNJK)

Orig 13JUL23

RNAV (GPS) RWY 8